

**Technical Data
 Speed Sensor**

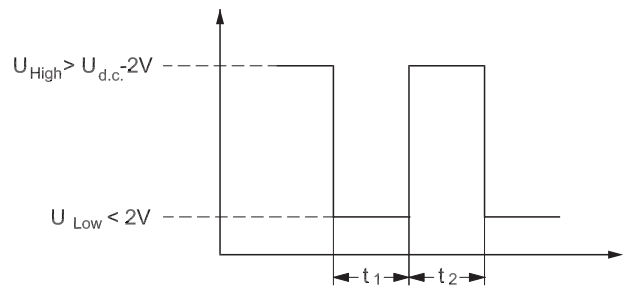
Mechanical data:

Temperatur range: -30°C to +90°C
 Enclosure acc. to IEC 529: IP 67

Electrical data

Principle: Hall
 Supply voltage: 11 - 30V
 Load max.: $I_{high} = I_{low} \pm 50 \text{ mA}$
 No load current, max.: 20 mA

Output signal:

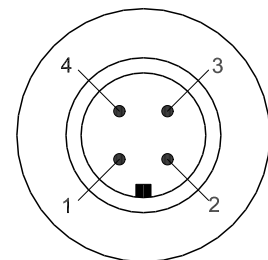


$$t_1 = t_2 \pm 10\%$$

159G33.11

Connection type			
	Binder Series	Molded in cable	Connection
Terminal no.:	713		
	1	brown	U_{DC} (+supply)
	2	White	No connection
	3	Blue	U_{DC} (-supply)
4	Black	Output signal	

Protection: Protected against short circuit and incorrect polarization.



159G82.10

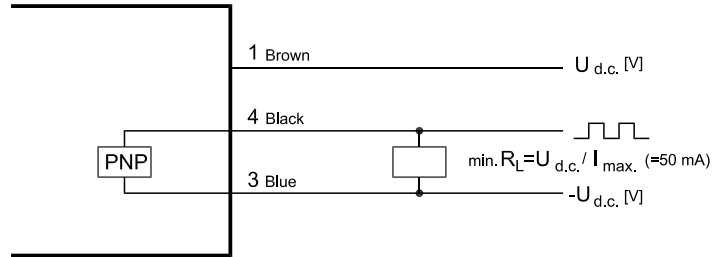
Revolution:

Pulses per revolution (PPR)	OMM EM	OMP EM	OMR EM	OMS EM	OMSW EM	OMT EM	OMV EM
	22	35	35	55	55	84	102

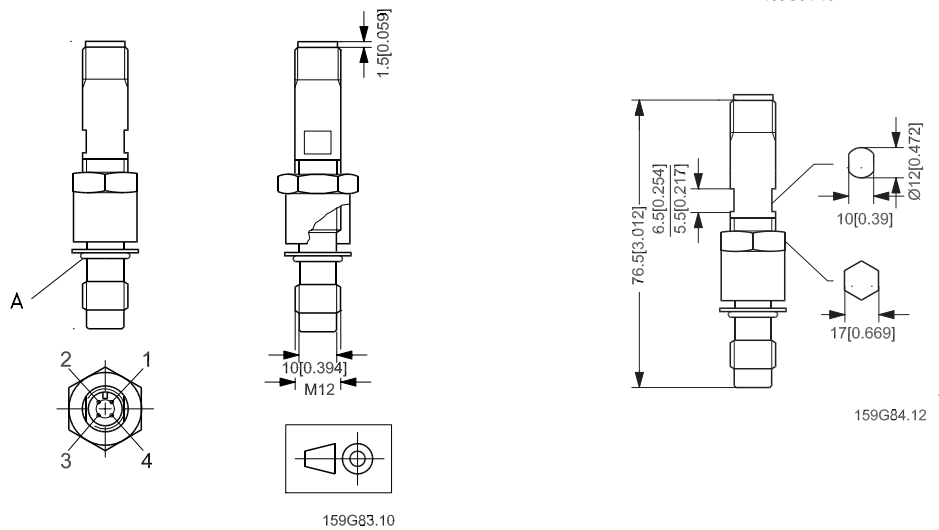
Calculation of frequency:

$$fr = \frac{RPM \cdot PPR}{60} \text{ [Hz]}$$

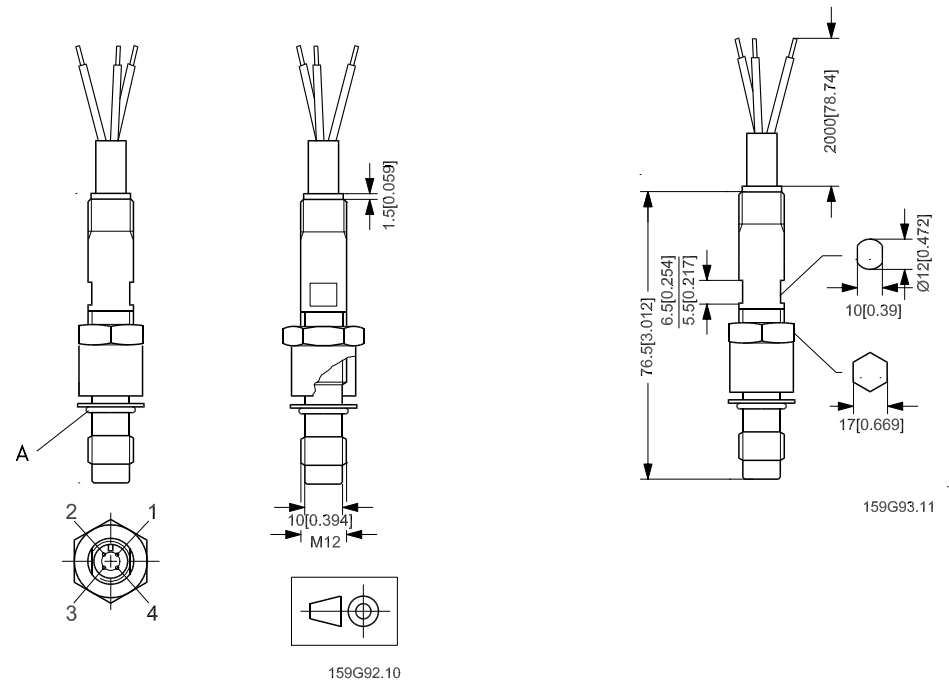
Wiring Diagram



**Speed Sensor with
 Plug Connection
 Dimensions**



**Speed Sensor with
 Molded in Cable
 Dimensions**



Spare Parts

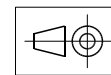
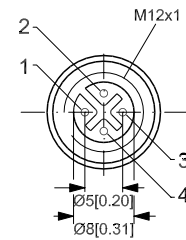
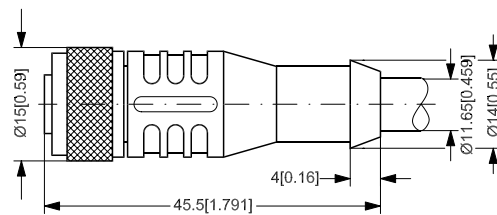
Speed sensor
 Code numbers

Type	Code no.
Sensor with plug (PNP output)	151-5662
Sensor with 2 m [6.56 ft] molded in cable (PNP output)	151-5663
Sensor with 5.5 m [18.04 ft] moulded in cable (PNP output)	151-5667
Sensor with plug (NPN output)	151-5833

Accessories

Cable with plug
 Code numbers

Cable length 5 m [16.4 ft]	984F0101
----------------------------	----------



159G85.10

Wire (shield)

Core: Cu, 4 • 0.34 mm²
 Sheath: PUR/PVC, colour: grey

Plug

Type: Binder, Series 713

Cable no:		
	1	brown
	2	white
	3	blue
	4	black

Temperature range: -30°C to +80°C
 Enclosure acc. to IEC 529: IP 67