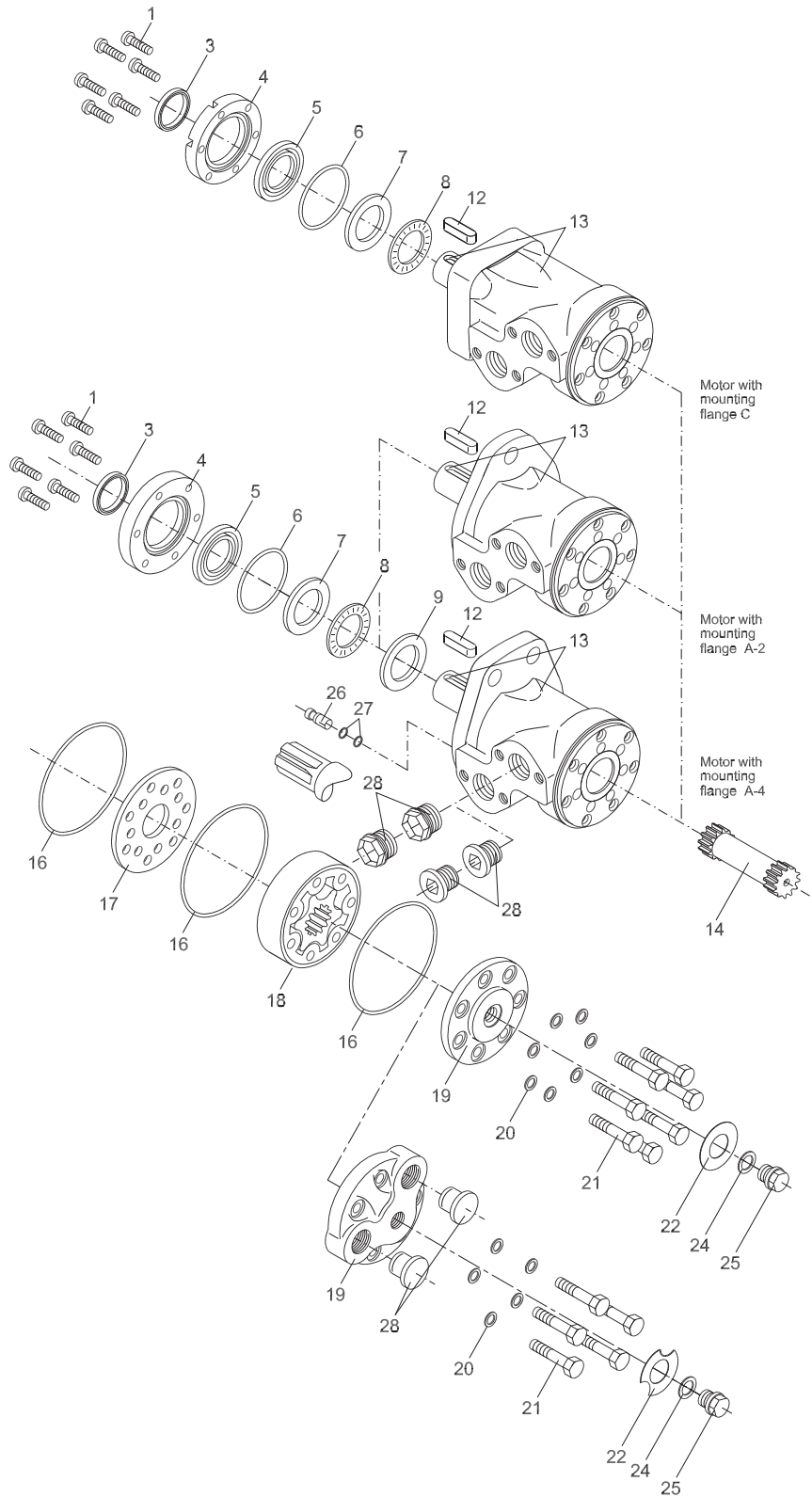


**Exploded View OMP  
and OMP C,  
Metric Version  
Series 7 with  
Separate Spigot Flange**



Item	Spare Part	Dimensions	Code no.	Number per motor					
				Series 8*		Series 7 with separate spigot flange			
				OMP Flange A2	OMP Flange A2	OMP C Flange A2	OMP Flange A4	OMP Flange C	OMPW OMPW N
22	Name plate Side port motor-aluminium Side port motor-brass End port motor-aluminium		151A0411 151A0412 151A0417		1 1 1	1 1 1	1 1 1		1 1 1
24	Washer	17.5 • 13.5 • 1.5 mm	684X2120		1	1	1	1	1
25	Drain plug		151-1524		1	1	1	1	1
26	Check valve incl. item 27 Only for OMP motors with built-in check valves		151-1076		2	2	2	2	2
27	O-ring	5.0 • 1.5 mm, NBR	633B1324		4	4	4	4	4
28	Plug Side port motor-plastic plug End port motor-steel plug End port motor-plastic plug		633X0074 631X9706 633X0074	2	2 2 2	2	2	2 2	2
3	Spare parts bag for motors with HPS and ø25 mm, ø1", 1" spl. shaft (Series 8)		151-1286	1					
5	1 pcs. Dust seal	35 • 27.5 • 2.2 mm NBR	633B0370						
16	1 pcs. shaft seal (series 8)	39 • 28.6 • 4.9 mm HSN	633B0361						
16	3 pcs. O-ring	75.9 • 1.8 mm NBR	633B1173						
20	3 pcs. O-ring	90 • 2.0 mm NBR	633B1301						
24	7 pcs. Washer	11.9 • 8.2 • 1 mm	684X0115						
24	1 pcs. Washer	17.5 • 13.5 • 1.5 mm	684X2120						
3	Spare parts bag for motors with standard shaft seal and ø25 mm, ø1", 1" spl. shaft 28.5 mm tapered shaft		151-1275		1	1**	1	1	1
5	1 pcs. Dust seal	35 • 28.5 • 4.0 mm NBR	151-1313						
6	1 pcs. Shaft seal (series 7)	42 • 28.6 • 5.5 mm NBR	633B3385						
6	1 pcs. O-ring	47.2 • 3.5 mm NBR	633B1191						
16	1 pcs. O-ring	48 • 2.0 mm NBR	633B1333						
20	3 pcs. O-ring	75.9 • 1.8 mm NBR	633B1173						
24	7 pcs. Washer	11.9 • 8.2 • 1 mm	684X0115						
24	1 pcs. Washer	17.5 • 13.5 • 1.5 mm	684X2120						
3	Spare parts bag for motors ø32 and 35 mm tapered shaft (Series 6/7)		151-1179		1		1		1
5	1 pcs. Dust seal	42 • 35 • 3.5 mm NBR	633B3198						
6	1 pcs. Shaft seal	48 • 3.5 • 5.5 mm NBR	633B3273						
16	1 pcs. O-ring	53 • 2.0 mm NBR	633B1528						
20	3 pcs. O-ring	75.9 • 1.8 mm NBR	633B1173						
24	7 pcs. Washer	11.9 • 8.2 • 1 mm	684X0115						
24	1 pcs. Washer	17.5 • 13.5 • 1.5 mm	684X2120						

NBR: (Buna N, Perbunan)

FPM: Viton (ISO 1629)

HPS: High pressure shaft seal

\*Series 8 with integrated spigot flange

\*\*Excl. dust seal ring 633B0010