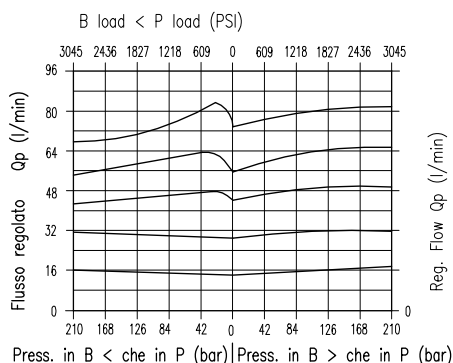
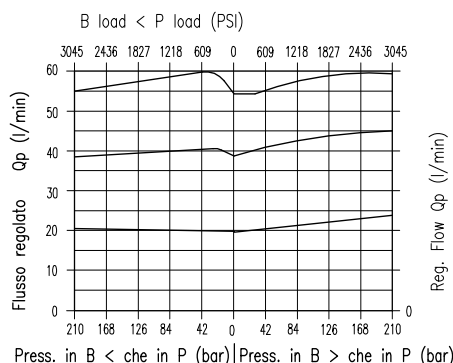
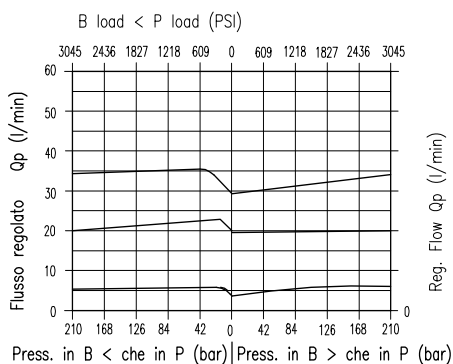


CARATTERISTICHE

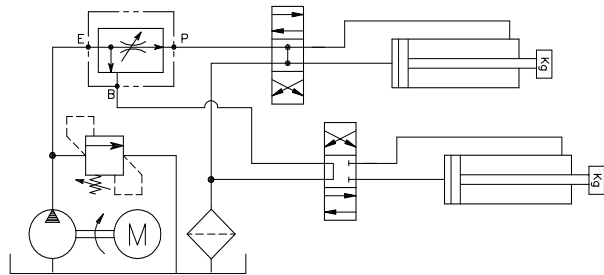
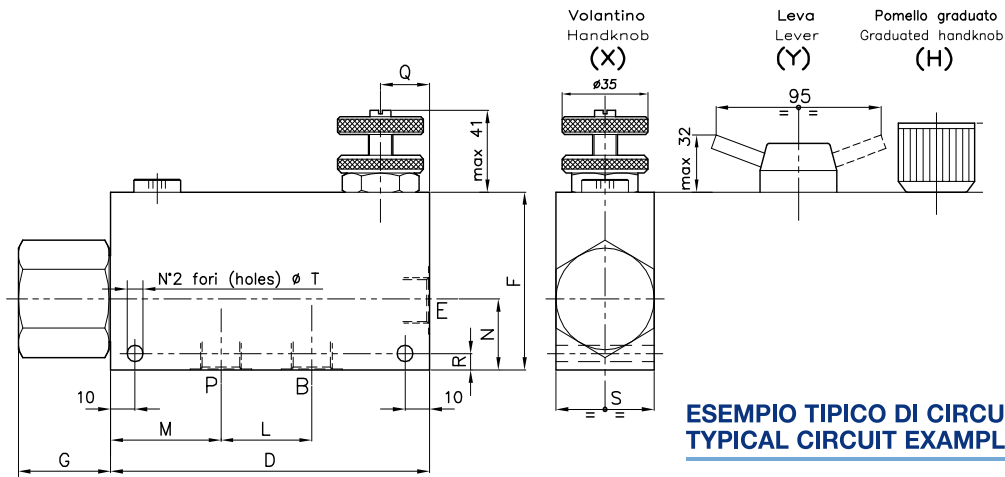
Luce nominale min/max	DN 6/11
Portata min/max	1/150 l/min - 0.26/39.6 GPM
Pressione di lavoro max.	210 bar - 3045 PSI
Temperatura ambiente	-30°C + 50°C
Temperatura olio	-30°C + 80°C
Filtraggio consigliato	50 micron
Peso	1.194 Kg. 3/8" GAS
Peso	1.171 Kg. 1/2" GAS
Peso	2.144 Kg. 3/4" GAS

PERFORMANCE

Min/max rated size
Min/max flow-rate
Max working pressure
Room temperature
Oil temperature
Recommended filtration
Weight
Weight
Weight



Viscosità olio 46 cSt a 50°C / Oil viscosity 46 cSt at 50°C



**DIMENSIONI
DIMENSIONS**

NUMERO VALVOLA VALVE NUMBER	D	F	G	L	M	N	Q	R	S	T	Attacchi Port size E-P-B GAS (BSPP)	Luce nominale Rated size DN	QP l/min - GPM	QE l/min - GPM
003	130	70	38	37	45	28	20	6.5	40	6.5	3/8"	6	30-7.9	55-14.5
005	130	70	38	37	45	28	20	6.5	40	6.5	1/2"	8	55-14.5	90-23.8
007	155	90	35	44	54	35	25	7.5	50	8.5	3/4"	11	90-23.8	150-39.6

QE = Portata max in entrata "E" - l/min
QE = Max admitted inlet flow "E" - l/min

QP = Portata max in uscita prioritario "P" - l/min
QP = Max delivery in priority "P" - l/min

**CODICE DI ORDINAZIONE
HOW TO ORDER**

004 003 0 X 0

Numero valvola / Valve number

003

005

007

Regolazione
Adjustment

- X | Volantino - Handknob
- Y | Leva - Lever
- H | Pomello graduato - Graduated handknob
- Z | Volantino in alluminio - Aluminium handknob