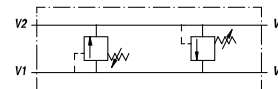
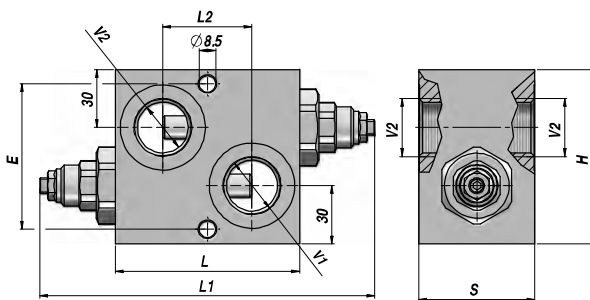
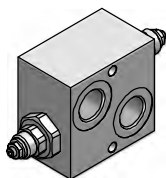


VAU/DE 1"

**VALVE ANTICHOC DOUBLE (TYPE DIFFERENTIEL)
DUAL CROSS-OVER RELIEF VALVE (DIFFERENTIAL TYPE)**



Code Code	V1 BSP	V2 BSP	Q MAX l/min	P MAX bar	Type Type	L	L1	L2	E	H	S	kg
V0590.0470	1"	1"	160	350	VAU/DE 1" Q	95	199	46	75	90	60	3,20

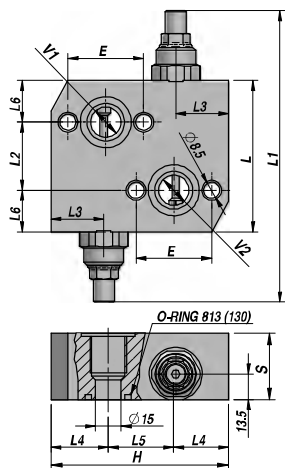
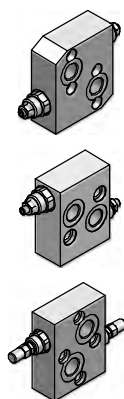
RESSORT - SPRING : N= 20:200 bar - Q= 50:400 bar (Standard)

MATERIEL CORPS : ACIER
BODY MATERIAL : STEEL

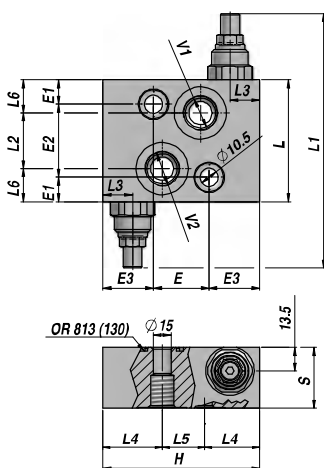
MONTAGE EN LIGNE
LINE MOUNTING

VAU/DE MP-R-S-T

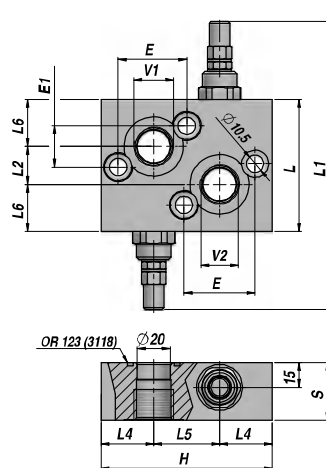
**VALVE ANTICHOC POUR MOTEURS
CROSS LINE RELIEF VALVE FOR MOTORS**



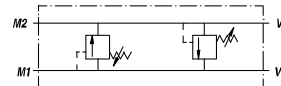
VAU OMP-OMR



VAU OMS



VAU OMT



Code Code	V1 BSP	V2 BSP	Q MAX l/min	P MAX bar	Type Type	L	L1	L2	L3	L4	L5	L6	E	E1	E2	E3	H	S	kg
V0590.0500	1/2"	1/2"	60	300	VAU/DE 1/2"C (OMP/R)	80	164	36	28	29	36	22.0	40.0	-	-	-	94	35	1,75
V0590.0490	1/2"	1/2"	50	300	VAU/DE 1/2"C (OMS)	70	154	32	17	34	22	19.0	32.0	14	42	29	90	35	1,33
V0590.0505	3/4"	3/4"	100	300	VAU/DE 3/4"C (OMT)	80	188	23	-	32	40	28.5	43.2	25	-	-	104	35	1,92

RESSORT - SPRING : B= 20:100 bar - C= 10:180 bar (Standard) - D= 50:250 bar - E= 80:300 bar

SUR DEMANDE - ON REQUEST : VAU/DE/SF ... AVEC DEBLOCAGE FREIN - WITH BRAKE RELEASE PORT

MATERIEL CORPS : ACIER
BODY MATERIAL : STEEL

FLASQUABLE
FACE MOUNTING