

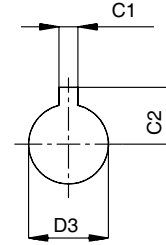
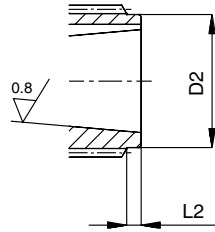
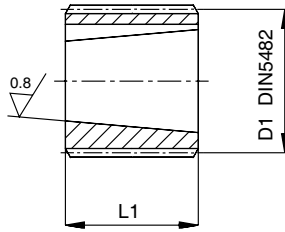
Semigiunti dentati serie BF per pompe unificate ad ingranaggi
Series BF splined couplings for unified gear pumps
Manchons dentés serie BF pour pompes unifiées à engrenages
Kupplingsnaben serie BF fuer norm-zahnradpumpen

Conicità
Taper
Conicité
Kegel

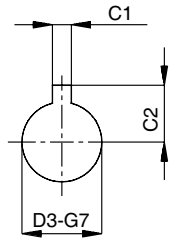
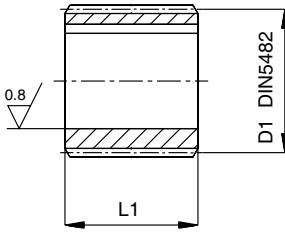
1 : 8

Foro cilindrico
Parallel hole
Trou cylindrique
Zylindrisch bohrung

Conicità 1:8
Taper 1:8
Conicité 1:8
Kegel 1:8



Foro cilindrico
Parallel hole
Trou cylindrique
Zylindrisch bohrung



N.denti Teeth numbers N.dents Zahnezahl	D1	Riferimento pompe Pump reference Référence pompes Ordnungsgruppe	Sigla Model code Sigle Bestellzeichen	Codice Part number Matricule Bestellnummer	D2	D3	L1	L2	C1	C2	
12	20x17	05	BF1/05	31000200		6	7		2	4	
		T05	BF1/06	31000500		7	9			4,6	
		1	BF1-1	31000400		7,78	1:8	14,5	2,4	5,8	
		1C	BF1C	31000300		12		13,5	3	7,5	
14	25x22	1	BF2/1-1	31001000		7,78	1:8	14,5	2,4	5,8	
		1C	BF2/1C	31001500		12		13,5	3	7,5	
		1M	BF2/1M	31001200		11,80		16		8,5	
		2	BF2	31000700				22	3,2	9,3	
		2T	BF2T	31000800	21			22,5	2	4	9,1
15	28x25	2	BF2Z15	31001900		14,30			3,2		
		2T	BF2TZ15	31002000					4	9,7	
17	32x28	2	BF2,5/2	31003300					3,2		
		2T	BF2,5/2T	31003000					4	11,7	
		3	BF2,5	31002300		18,61					
18	35x31	2	BF3/2	31003900		14,30			3,2		
		2T	BF3/2T	31004000					4	9,7	
		3	BF3	31003500		18,61				12,5	
20	40x36	2	BF3,5/2	31005600		14,30			3,2		
		2T	BF3,5/2T	31006200					4	9,7	
		3	BF3,5/3	31005800		18,61				12,5	
		3,5	BF3,5	31005400		21,08				4,8	15,1
23	48x44	2	BF4/2	31007000		14,30			3,2		
		2T	BF4/2T	31007100					4	9,7	
		3	BF4/3	31007200		18,61				12,5	
		3,5	BF4/3,5	31007300		21,08				4,8	15,1
		4	BF4	31006600		27,61				6,4	18,7