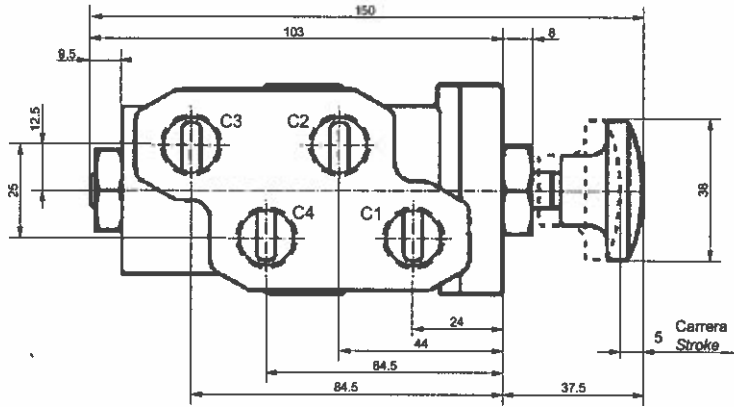
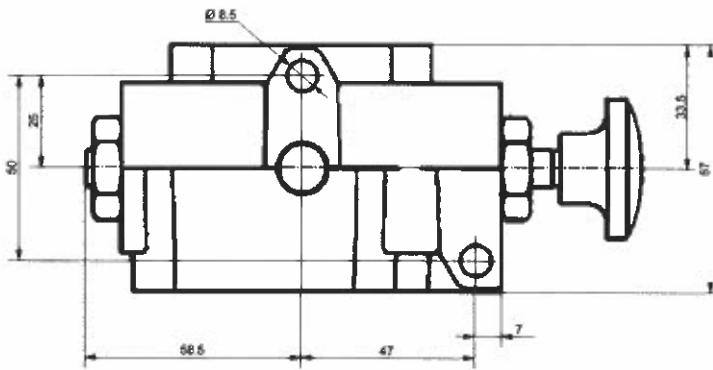


Válvulas selectoras 6 vías
6-way selector valve

9372000 /*



Datos técnicos / Technical data	
Presión máxima de trabajo Max. working pressure	250 bar
Caudal nominal Nominal flow rate	40 l/min
Potencia electroimán Solenoid power	Manual
Tipo de conector Connection type	Manual



Schematic diagram of the 6-way selector valve showing port connections. The diagram shows a central solenoid with two ports labeled P1 and P2. The ports are connected to the valve body, which has six ports labeled C1, C2, C3, C4, C5, and C6. The connections are shown as follows: C1 and C2 are connected to P1, and C3 and C4 are connected to P2. C5 and C6 are shown as closed ports.

Tomas C1, C2, C3, C4, P1 y P2 roscadas a 3/8" B.S.P.
 Prof. rosca 14mm
 Ports C1, C2, C3, C4, P1 and P2 3/8" B.S.P.
 Depth 14mm

