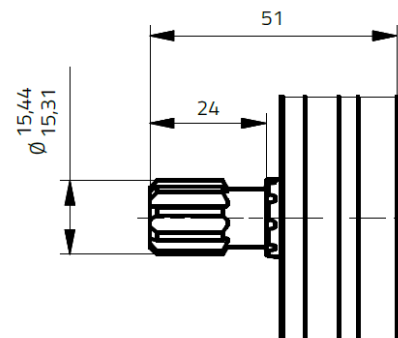
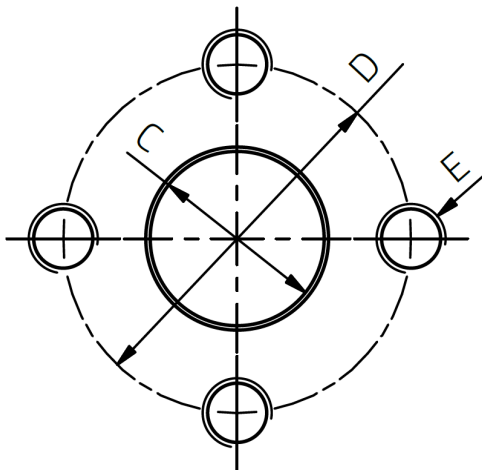


Reference	Displacement cm ³ /rev	A	B	Weight kg	Max pressure - bar		Min. rpm at 100bar
					Cont.	Int.	
RQ1G4CDG09B	4,0	23,4	46,8	3,3	275	300	500
RQ1G6CDG09B	6,0	25,2	50,3	3,4			
RQ1G8CDG09B	8,0	26,8	53,5	3,5			
RQ1G11DG09B	10,7	29	58	3,6			
RQ1G15CDG09B	14,7	32,4	64,8	3,9	250	275	
RQ1G18CDG09B	18,0	35,3	70,5	4,2	225	250	
RQ1G23CDG09B	23,3	39,8	79,5	4,6	180	200	
RQ1G27CDG09B	26,7	41,8	83,5	4,9	170	190	

B ports	Suction			Pressure		
Displacement	C	D	E	C	D	E
4 ... 6	13,5	30	M6	13,5	30	M6
8 ... 12	20	40	M8	15		M8
15 ... 26,7						



SAE J498b
 9 teeth
 Pitch 16/32
 Side fit
 Pressure angle 30 deg

