





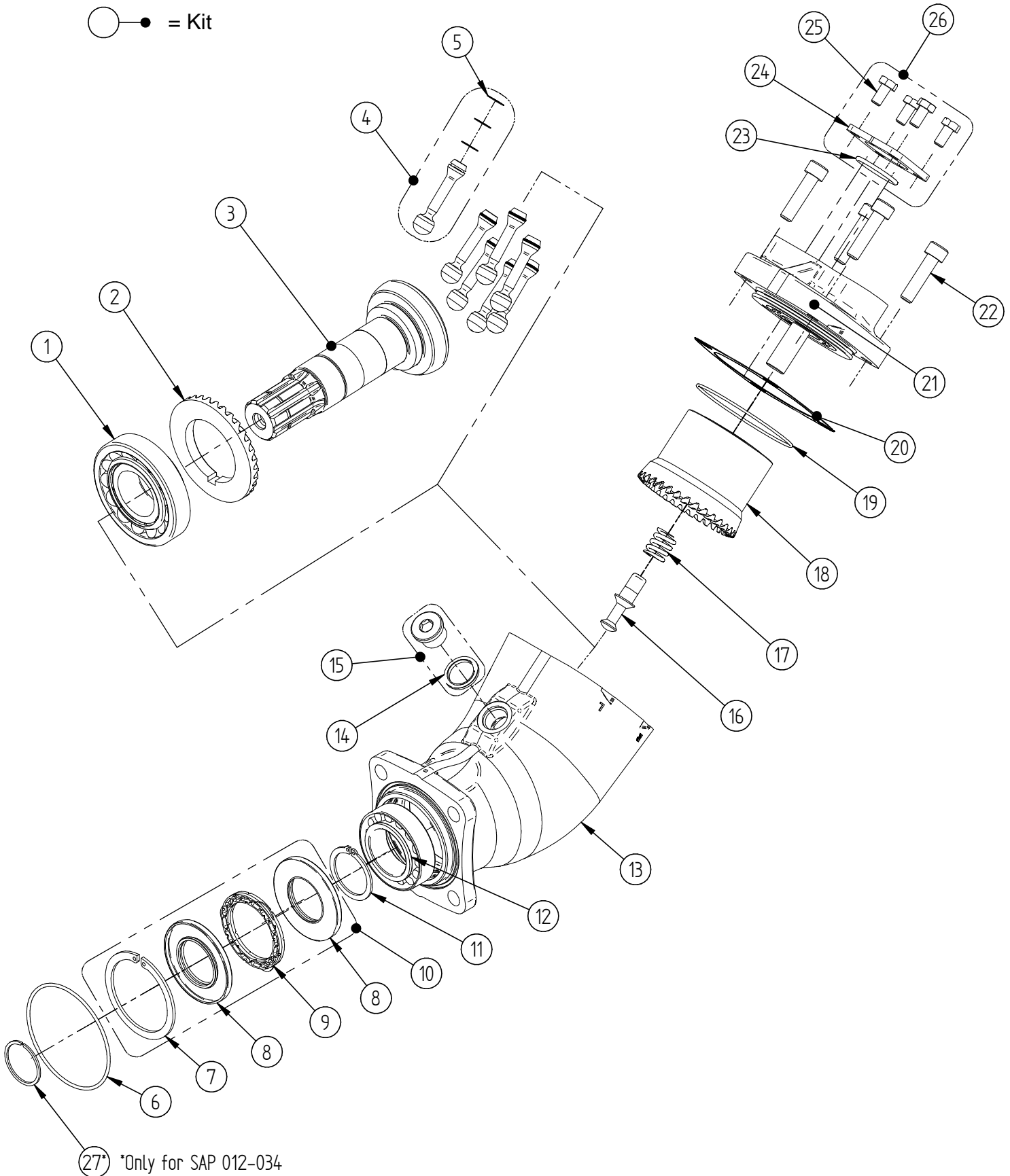
Contents

Exploded view.....	3
SAP 012	4
SAP 017	5
SAP 025	6
SAP 034	7
SAP 040	8
SAP 047	9
SAP 056	10
SAP 064	11
SAP 084 (Standard, Optimised & Optimised for injector)	12
SAP 108 (Standard, Optimised & Optimised for injector)	13



○ → = Part

○ ● = Kit





SAP 012

Item	Part No.	Title	Type*	Qty.
1	91666	Tapered roller bearing		1
2	20086	Gear ring		1
3	20833	Shaft	L35	1
4	50279	Piston (with piston rings)		5
5	20096	Piston rings		15
6	91441	O-ring		1
7	92101	Lock ring		1
8	92112	Shaft seal		2
9	21000	Sealing support		1
10	50667	Shaft seal kit		-
11	90780	Lock ring		1
12	91938	Tapered roller bearing		1
13	20758	Pump housing	DL4-DIN 4-hole	1
14	90307	Seal washer		1
15	50337	Plug (with seal washer)		1
16	21098	Spring pin		1
17	92078	Spring		1
18	21033	Cylinder block		1
19	92174	O-ring		1
20	22051	Shim		1
21	20781	Connection Cover	S0S-0	1
22	91617	Bolt		4
23	91754	O-ring		1
24	20068	Clamping plate		2
25	90341	Bolt		4
26	50339	Clamping plate kit		-
27	91559	Lock ring		1
-	50935	Seal Kit Includes Items 6, 7, 8, 9, 14, 19, 20, 23		-

*For different types, see datasheet at <http://www.sunfab.com> or contact Sunfab



SAP 017

Item	Part No.	Title	Type*	Qty.
1	91666	Tapered roller bearing		1
2	20086	Gear ring		1
3	20833	Shaft	L35	1
4	50280	Piston (with piston rings)		5
5	20095	Piston rings		15
6	91441	O-ring		1
7	92101	Lock ring		1
8	92112	Shaft seal		2
9	21000	Sealing support		1
10	50667	Shaft seal kit		-
11	90780	Lock ring		1
12	91938	Tapered roller bearing		1
13	20758	Pump housing	DL4-DIN 4-hole	1
14	90307	Seal washer		1
15	50337	Plug (with seal washer)		1
16	21098	Spring pin		1
17	92078	Spring		1
18	21034	Cylinder block		1
19	92174	O-ring		1
20	22051	Shim		1
21	20783	Connection Cover	S0S-0	1
22	91617	Bolt		4
23	91754	O-ring		1
24	20068	Clamping plate		2
25	90341	Bolt		4
26	50339	Clamping plate kit		-
27	91559	Lock ring		1
-	50935	Seal Kit Includes Items 6, 7, 8, 9, 14, 19, 20, 23		-

*For different types, see datasheet at <http://www.sunfab.com> or contact Sunfab



SAP 025

Item	Part No.	Title	Type*	Qty.
1	91666	Tapered roller bearing		1
2	20086	Gear ring		1
3	20834	Shaft	L35	1
4	50279	Piston (with piston rings)		7
5	20096	Piston rings		21
6	91441	O-ring		1
7	92101	Lock ring		1
8	92112	Shaft seal		2
9	21000	Sealing support		1
10	50667	Shaft seal kit		-
11	90780	Lock ring		1
12	91938	Tapered roller bearing		1
13	20758	Pump housing	DL4-DIN 4-hole	1
14	90307	Seal washer		1
15	50337	Plug (with seal washer)		1
16	21048	Spring pin		1
17	92060	Spring		1
18	21035	Cylinder block		1
19	92174	O-ring		1
20	22051	Shim		1
21	20785	Connection Cover	S0S-0	1
22	91617	Bolt		4
23	91754	O-ring		1
24	20068	Clamping plate		2
25	90341	Bolt		4
26	50339	Clamping plate kit		-
27	91559	Lock ring		1
-	50935	Seal Kit Includes Items 6, 7, 8, 9, 14, 19, 20, 23		-

*For different types, see datasheet at <http://www.sunfab.com> or contact Sunfab



SAP 034

Item	Part No.	Title	Type*	Qty.
1	91666	Tapered roller bearing		1
2	20086	Gear ring		1
3	20834	Shaft	L35	1
4	50280	Piston (with piston rings)		7
5	20095	Piston rings		21
6	91441	O-ring		1
7	92101	Lock ring		1
8	92112	Shaft seal		2
9	21000	Sealing support		1
10	50667	Shaft seal kit		-
11	90780	Lock ring		1
12	91938	Tapered roller bearing		1
13	20758	Pump housing	DL4-DIN 4-hole	1
14	90307	Seal washer		1
15	50337	Plug (with seal washer)		1
16	21048	Spring pin		1
17	92060	Spring		1
18	21036	Cylinder block		1
19	92174	O-ring		1
20	22051	Shim		1
21	20787	Connection Cover	S0S-0	1
22	91617	Bolt		4
23	91754	O-ring		1
24	20068	Clamping plate		2
25	90341	Bolt		4
26	50339	Clamping plate kit		-
27	91559	Lock ring		1
-	50935	Seal Kit Includes Items 6, 7, 8, 9, 14, 19, 20, 23		-

*For different types, see datasheet at <http://www.sunfab.com> or contact Sunfab



SAP 040

Item	Part No.	Title	Type*	Qty.
1	91603	Tapered roller bearing		1
2	20335	Gear ring		1
3	50677	Shaft	L35	1
4	50275	Piston (with piston rings)		7
5	20095	Piston rings		21
6	91441	O-ring		1
7	92082	Lock ring		1
8	92100	Shaft seal		2
9	21001	Sealing support		1
10	50666	Shaft seal kit		-
11	92052	Lock ring		1
12	92037	Tapered roller bearing		1
13	20681	Pump housing	DL4-DIN 4-hole	1
14	90307	Seal washer		1
15	50337	Plug (with seal washer)		1
16	21048	Spring pin		1
17	92060	Spring		1
18	21044	Cylinder block		1
19	91681	O-ring		1
20	20599	Shim		1
21	20788	Connection Cover	S0S-0	1
22	91617	Bolt		4
23	91754	O-ring		1
24	20068	Clamping plate		2
25	90341	Bolt		4
26	50339	Clamping plate kit		-
-	50906	Seal Kit Includes Items 6, 7, 8, 9, 14, 19, 20, 23		-

*For different types, see datasheet at <http://www.sunfab.com> or contact Sunfab



SAP 047

Item	Part No.	Title	Type*	Qty.
1	91603	Tapered roller bearing		1
2	20335	Gear ring		1
3	50677	Shaft	L35	1
4	50281	Piston (with piston rings)		7
5	20032	Piston rings		21
6	91441	O-ring		1
7	92082	Lock ring		1
8	92100	Shaft seal		2
9	21001	Sealing support		1
10	50666	Shaft seal kit		-
11	92052	Lock ring		1
12	92037	Tapered roller bearing		1
13	20681	Pump housing	DL4-DIN 4-hole	1
14	90307	Seal washer		1
15	50337	Plug (with seal washer)		1
16	21048	Spring pin		1
17	92060	Spring		
18	21037	Cylinder block		1
19	91681	O-ring		1
20	20599	Shim		1
21	20789	Connection Cover	S0S-0	1
22	91617	Bolt		4
23	91754	O-ring		1
24	20068	Clamping plate		2
25	90341	Bolt		4
26	50339	Clamping plate kit		-
-	50906	Seal Kit Includes Items 6, 7, 8, 9, 14, 19, 20, 23		-

*For different types, see datasheet at <http://www.sunfab.com> or contact Sunfab



SAP 056

Item	Part No.	Title	Type*	Qty.
1	91603	Tapered roller bearing		1
2	20335	Gear ring		1
3	50677	Shaft	L35	1
4	50289	Piston (with piston rings)		7
5	20402	Piston rings		21
6	91441	O-ring		1
7	92082	Lock ring		1
8	92100	Shaft seal		2
9	21001	Sealing support		1
10	50666	Shaft seal kit		-
11	92052	Lock ring		1
12	92037	Tapered roller bearing		1
13	20681	Pump housing	DL4-DIN 4-hole	1
14	90307	Seal washer		1
15	50337	Plug (with seal washer)		1
16	21048	Spring pin		1
17	92060	Spring		1
18	21038	Cylinder block		1
19	91681	O-ring		1
20	20599	Shim		1
21	20790	Connection Cover	S0S-0	1
22	91617	Bolt		4
23	91754	O-ring		1
24	20068	Clamping plate		2
25	90341	Bolt		4
26	50339	Clamping plate kit		-
-	50906	Seal Kit Includes Items 6, 7, 8, 9, 14, 19, 20, 23		-

*For different types, see datasheet at <http://www.sunfab.com> or contact Sunfab



SAP 064

Item	Part No.	Title	Type*	Qty.
1	91603	Tapered roller bearing		1
2	20335	Gear ring		1
3	50677	Shaft	L35	1
4	50282	Piston (with piston rings)		7
5	20033	Piston rings		21
6	91441	O-ring		1
7	92082	Lock ring		1
8	92100	Shaft seal		2
9	21001	Sealing support		1
10	50666	Shaft seal kit		-
11	92052	Lock ring		1
12	92037	Tapered roller bearing		1
13	20681	Pump housing	DL4-DIN 4-hole	1
14	90307	Seal washer		1
15	50337	Plug (with seal washer)		1
16	21048	Spring pin		1
17	92060	Spring		1
18	21039	Cylinder block		1
19	91681	O-ring		1
20	20599	Shim		1
21	20791	Connection Cover	S0S-0	1
22	91617	Bolt		4
23	91754	O-ring		1
24	20068	Clamping plate		2
25	90341	Bolt		4
26	50339	Clamping plate kit		-
-	50906	Seal Kit Includes Items 6, 7, 8, 9, 14, 19, 20, 23		-

*For different types, see datasheet at <http://www.sunfab.com> or contact Sunfab



SAP 084

Item	Part No.	Title	Type*	Qty.
1	91604	Tapered roller bearing		1
2	20047	Gear ring		1
3	20832	Shaft	L35	1
4	50283	Piston (with piston rings)		7
5	20034	Piston rings		21
6	91441	O-ring		1
7	92082	Lock ring		1
8	92100	Shaft seal		2
9	21001	Sealing support		1
10	50666	Shaft seal kit		-
11	92052	Lock ring		1
12	91604	Tapered roller bearing		1
13	20756	Pump housing	DL4-DIN 4-hole	1
14	90307	Seal washer		1
15	50337	Plug (with seal washer)		1
16	21048	Spring pin		1
17	92060	Spring		1
18	20829	Cylinder block		1
19	92158	O-ring		1
20	22046	Shim		1
21	20765	Connection Cover	S0S-0	1
21	20813	Connection Cover (Left)	S0S-2**	1
21	20814	Connection Cover (Right)	S0S-2**	1
21	20815	Connection Cover (Left)	S0S-3***	1
21	20816	Connection Cover (Right)	S0S-3***	1
22	92128	Bolt		4
23	90519	O-ring		1
24	17895	Clamping plate		2
25	90341	Bolt		4
26	50225	Clamping plate kit		-
-	50934	Seal Kit Includes Items 6, 7, 8, 9, 14, 19, 20, 23		-

* For different types, see datasheet at <http://www.sunfab.com> or contact Sunfab

** Optimised

*** Optimised for injector



SAP 108

Item	Part No.	Title	Type*	Qty.
1	91604	Tapered roller bearing		1
2	20047	Gear ring		1
3	20832	Shaft	L35	1
4	50284	Piston (with piston rings)		7
5	20035	Piston rings		21
6	91441	O-ring		1
7	92082	Lock ring		1
8	92100	Shaft seal		2
9	21001	Sealing support		1
10	50666	Shaft seal kit		-
11	92052	Lock ring		1
12	91604	Tapered roller bearing		1
13	20756	Pump housing	DL4-DIN 4-hole	1
14	90307	Seal washer		1
15	50337	Plug (with seal washer)		1
16	21048	Spring pin		1
17	92060	Spring		1
18	20797	Cylinder block		1
19	92158	O-ring		1
20	22046	Shim		1
21	20771	Connection Cover	S0S-0	1
21	20817	Connection Cover (Left)	S0S-2**	1
21	20818	Connection Cover (Right)	S0S-2**	1
21	20819	Connection Cover (Left)	S0S-3***	1
21	20820	Connection Cover (Right)	S0S-3***	1
22	92128	Bolt		4
23	90519	O-ring		1
24	17895	Clamping plate		2
25	90341	Bolt		4
26	50225	Clamping plate kit		-
-	50934	Seal Kit Includes Items 6, 7, 8, 9, 14, 19, 20, 23		-

* For different types, see datasheet at <http://www.sunfab.com> or contact Sunfab

** Optimised

*** Optimised for injector