

Flow Control Valve FKA 162, FKA 332



7	162-0
7	332-0



FKA 162 and FKA 332 are 2-way pressure-compensated flow control valves. They have free flow via a check valve in the opposite direction to the controlled flow.

Flow setting is done with fixed orifices within the range 5-50 l/min, and 20-120 l/min, respectively.

The maximum working pressure is 250 bar. The valves have small dimensions and can be mounted directly in the A and B ports of

our directional control valves.

FKA 162/332 have very good regulation characteristics, and the set flow stabilizes very quickly, even with large pressure variations. They can therefore be used in the majority of cases where flow (speed) must be restricted, but are also very suitable for restricting max. speed when lowering loads. Typical examples of such use are cranes, fork lift trucks, support legs etc.

Technical Data

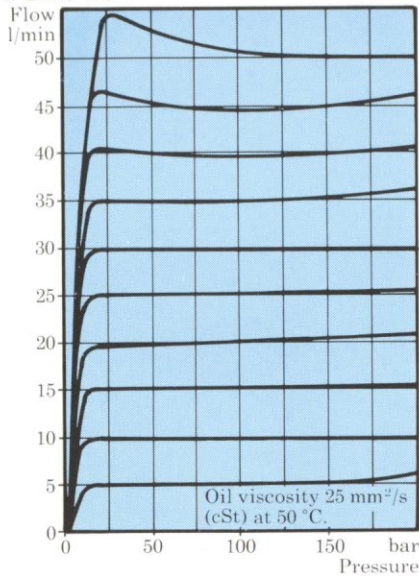
Max. continuous working pressure 250 bar (25 MPa)

Hydraulic fluid temperature range for continuous operation -15 °C - +60 °C

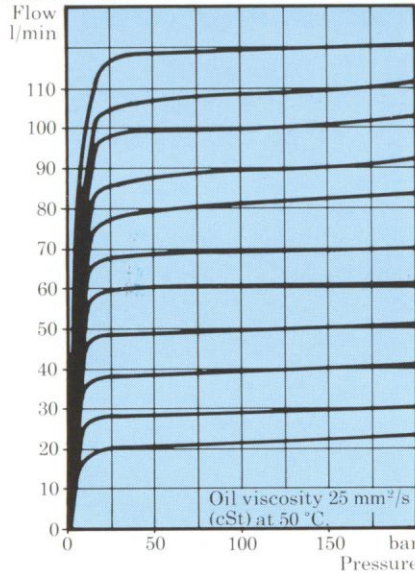
Hydraulic fluid viscosity range 10-400 mm²/s (cSt)

Recommended filtration 25 µm absolute

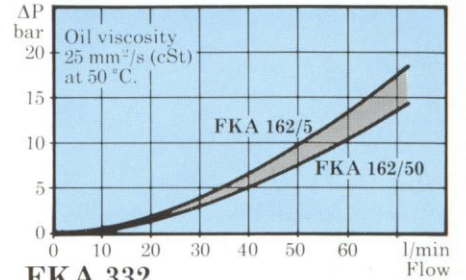
Flow characteristics
FKA 162



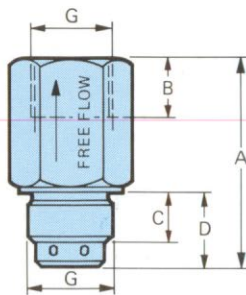
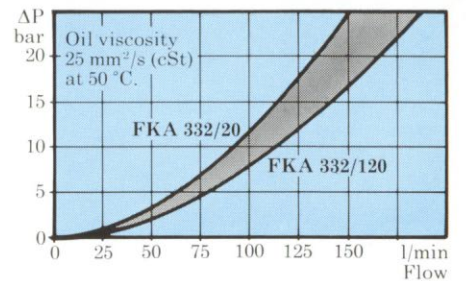
Flow characteristics
FKA 332



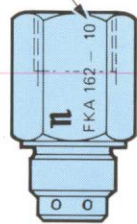
Pressure drop "free flow"
FKA 162



FKA 332



Set flow l/min.



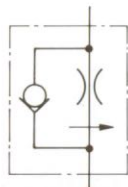
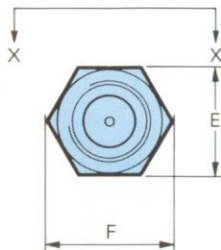
X — X

Type	Fixed flow l/min										
FKA 162	5	10	15	20	25	30	35	40	45	50	
FKA 332	20	30	40	50	60	70	80	90	100	110	120

Other flows available on request.

Dimensions and weight								
Type	A	B	C	D	E	F	G	weight
FKA 162	54	15	11	19	27	- 31	R 1/2"	0,12
FKA 332	73	16	13	22	32	- 37	R 3/4"	0,25

All dimensions in mm. Type R. thread = B.S.P. thread



Symbol

Ordering example: **FKA 162/35**
Pressure compensated flow 35 l/min

Nordhydraulic
NORDWIN GROUP
Industrivägen 15, Box 189, S-872 01 Kramfors 1, Telex: 71248

Phone: NAT. 0612 115 50
INT. +46 612 115 50



Subject to alteration without prior notice.
Please consult us in case of doubt.