

Prodotto: Alberi Cardanici
Product: *Drivelines*Relazione Tecnica **XDC042301**
Technical ReportIndice modifica 00
RevisionOggetto: Aggiornamento dei collari a sfere RT e RTA per alberi cardanici SFT
Subject: *Updating of the RT and RTA ball collars for SFT cardan shafts*

MATRICE DELLE REVISIONI

REVISIONS

Indice modifica Revision	DATA DATE	Descrizione Description	Visto Approved
00	20 / 10 / 2023	Versione iniziale	UT
		<i>Initial edition</i>	

Prodotto: Alberi Cardanici
Product: DrivelinesRelazione Tecnica **XDC042301**
Technical ReportIndice modifica 00
RevisionOggetto: Aggiornamento dei collari a sfere RT e RTA per alberi cardanici SFT
Subject: Updating of the RT and RTA ball collars for SFT cardan shafts

La continua ricerca ergonomica sul prodotto ha portato a una nuova forma dei collari delle forcelle con collare a sfere normali (RT) ed automatici (RTA).

Le nuove forcelle sono intercambiabili con le forcelle attuali e mantengono gli stessi codici di attacco (3 cifre) e di ricambi (9 cifre) in modo che i disegni ed i codici degli alberi cardanici già nel sistema ed in produzione non richiedano aggiornamenti.

Anche i codici a ricambio dei kit collari a sfere restano gli stessi, tranne quelli delle forcelle RTA per omocinetici dimensioni S4, S6, H7, S8, H8, che hanno nuovi collari con diametro 98 mm e nuovi codici a ricambio per distinguerli da quelli delle dimensioni maggiori.

Nel caso di kit RT per giunti omocinetici con profilo GOST Z8, è necessario sostituire la forcella completa.

La nuova forma dei collari comporta in generale una riduzione del diametro esterno di alcuni millimetri. Fanno eccezione le forcelle 1 3/8" Z6-Z21 per giunto omocinetico dimensione S9-SH che aumentano il loro diametro di 2 mm, ma mantengono la completa intercambiabilità.

I clienti possono continuare ad ordinare i componenti con gli attuali codici e riceveranno i nuovi componenti automaticamente, a partire da inizio 2024 man mano che i componenti attuali saranno esauriti e sostituiti.

Le seguenti pagine illustrano degli esempi comparativi e le pagine allegate del catalogo SFT mostrano le nuove forcelle con le loro dimensioni ed i rispettivi codici.

The continuous ergonomic research on the product has led to a new shape of the collars of Ball Collar yokes (RT) and Automatic Ball Collar yokes (RTA).

The yokes with new collars are interchangeable with current yokes and they maintain the current (3 digits) attachment codes and the current (9 digits) spare parts codes so the part numbers of the drivelines and spare parts in the system and in production are not affected.

Also the code of the spare parts of ball collar kit remain the same apart from those of the yokes RTA for CV-joints S4, S6, H7, S8, H8, that have new diameter 98 mm collars and new spare part numbers to identify them from those of the bigger sizes.

In case of RT kit for CV joints with GOST (Z8) spline, the complete yoke has to be replaced.

The new shape of the collars involves in general a reduction of diameter by some millimeter, apart from the yokes for CV-joint sizes S9-SH with splines 1 3/8" Z6-Z21, that have a diameter 2 mm wider, but maintain a complete interchangeability.

Customers can continue to order the drivelines, yokes and ball collar kits with the current part numbers and they will receive the new components starting from the beginning of 2024 as the current collars will be exhausted and replaced by the new.

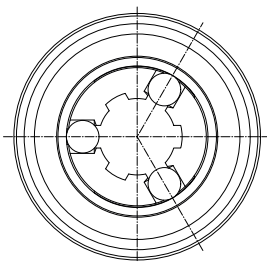
The following pages show some examples of current and new yokes, and the enclosed pages of SFT catalogue, show the new yokes, with their dimensions and part numbers.

Prodotto: Alberi Cardanici
Product: DrivelinesRelazione Tecnica **XDC042301**
Technical ReportIndice modifica 00
RevisionOggetto: Aggiornamento dei collari a sfere RT e RTA per alberi cardanici SFT
Subject: Updating of the RT and RTA ball collars for SFT cardan shaftsForcella con attuale collare a sfere RT
Yoke with current RT ball collarForcella con nuovo collare a sfere RT
Yoke with new RT ball collarForcella con attuale collare a sfere automatico RTA
Yoke with current RTA automatic ball collarForcella con nuovo collare a sfere automatico RTA
Yoke with new RTA automatic ball collar

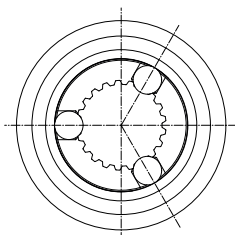
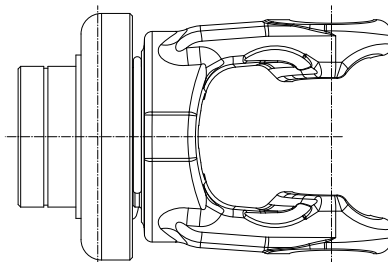
Prodotto: Alberi Cardanici
Product: DrivelinesRelazione Tecnica **XDC042301**
Technical ReportIndice modifica 00
RevisionOggetto: Aggiornamento dei collari a sfere RT e RTA per alberi cardanici SFT
Subject: Updating of the RT and RTA ball collars for SFT cardan shaftsForcella 80° OC con attuale collare a sfere RT
80° CVJ yoke with current RT ball collarForcella 80° OC con nuovo collare a sfere RT
80° CVJ yoke with new RT ball collarForcella 80° OC con attuale collare a sfere RTA
80° CVJ yoke with current RTA ball collarForcella 80° OC con nuovo collare a sfere RTA
80° CVJ yoke with new RTA ball collar

Forcelle per giunto cardanico semplice

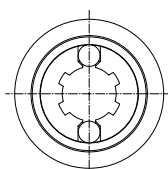
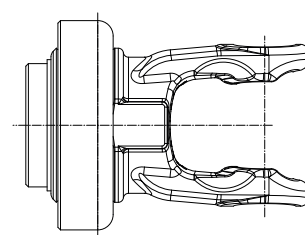
Forcelle con collare a sfere RT



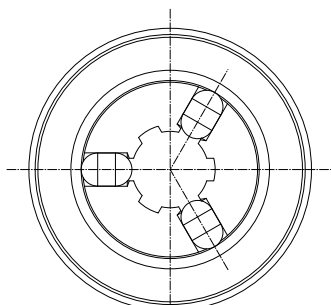
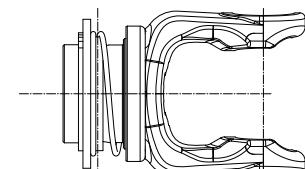
Collare tipo A



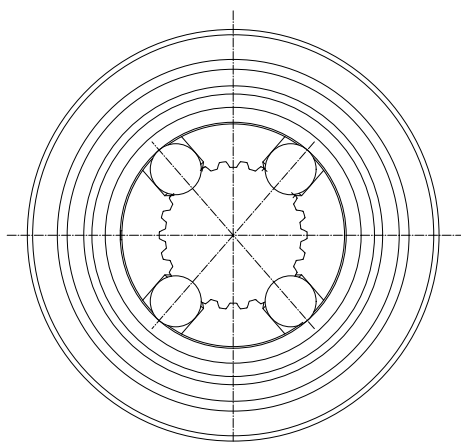
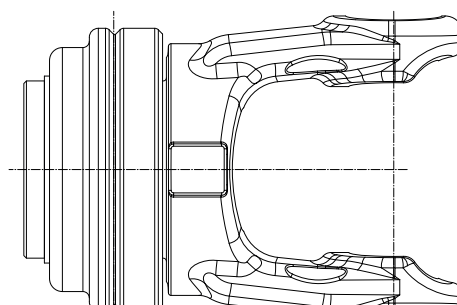
Collare tipo A1



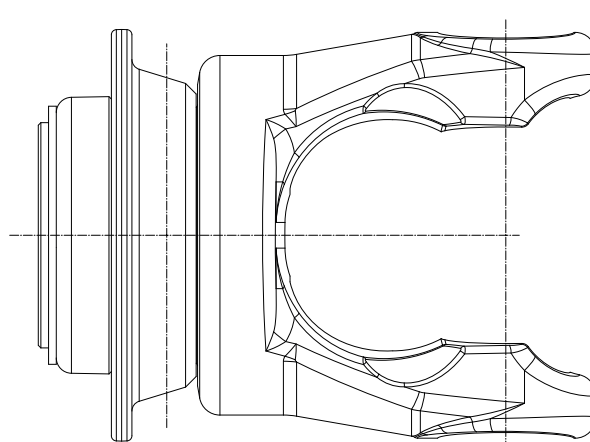
Collare tipo B



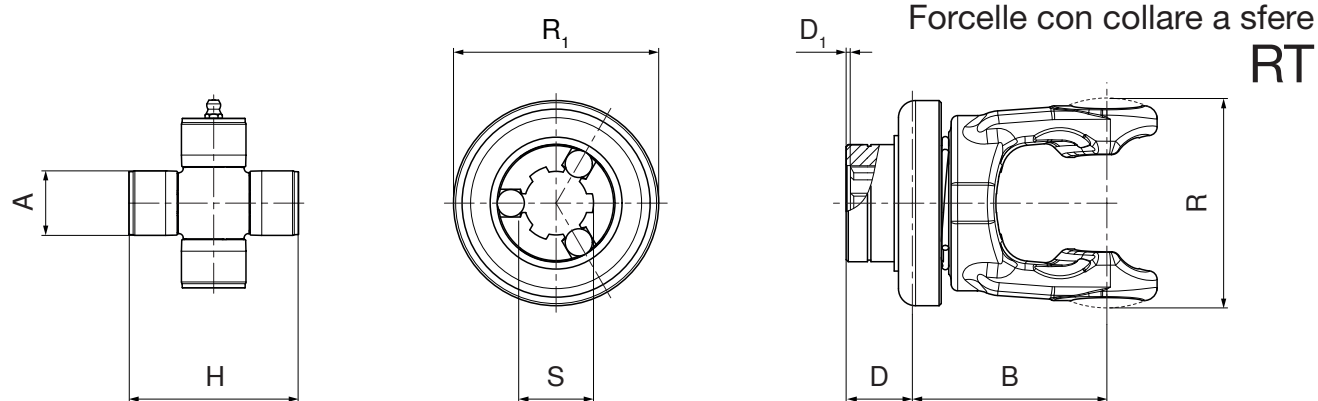
Collare tipo C



Collare tipo D



Forcelle per giunto cardanico semplice



	A	H	S	D	D ₁	B	R ₁	R	Tipo	Codice	Codice	
	mm	mm		mm	mm	mm	mm	mm	p.12.2	forcella	ricambio	
S1	22.0	54.0	1 3/8" Z6	18	2	75	82	67	A	R07	5720B0355	435000320R
			1 3/8" Z21	28	2	65	82	67	A1	R08	5720B3776	435000300R
			21 UNI 221	14	0	64	58	67	B	R01	5050B0951	435000901R
S2	23.8	61.3	1 3/8" Z6	21	2	78	82	76	A	R07	5720C0355	435000320R
			1 3/8" Z21	31	2	68	82	76	A1	R08	5720C3776	435000300R
			21 UNI 221	16	0	71	58	76	B	R01	5050C0951	435000901R
S4	27.0	74.6	1 3/8" Z6	31	2	85	96	89	A	R07	5720E0355	435000321R
			1 3/8" Z21	31	2	85	96	89	A	R08	5720E3755	435000321R
			D8x32x38	31	2	85	100	89	A	R93	5720E2151	435002121R
S5 - S6	30.2	79.4	1 3/8" Z6	31	2	91	96	98	A	R07	5720G0355	435000321R
			1 3/8" Z21	31	2	91	96	98	A	R08	5720G3755	435000321R
			D8x32x38	31	2	91	100	98	A	R93	5720G2151	435002121R
			1 3/4" Z6	31	2	95	114	98	A	R09	5720G0455	435000418R
			1 3/4" Z20	31	2	95	114	98	A	R10	5720G3855	435000418R
H7	30.2	91.5	1 3/8" Z6	31	2	98	96	108	A	R07	5720H0355	435000321R
			1 3/8" Z21	31	2	98	96	108	A	R08	5720H3755	435000321R
			D8x32x38	31	2	98	100	108	A	R93	5720H2151	435002121R
			1 3/4" Z6	31	2	100	114	108	A	R09	5720H0455	435000418R
			1 3/4" Z20	31	2	100	114	108	A	R10	5720H3855	435000418R
S8 - H8	34.9	93.5	1 3/8" Z6	35	7	105	114	113	A	R07	5720L0355	435000322R
			1 3/8" Z21	35	2	105	114	113	A	R08	5720L3755	435000322R
			D8x32x38	35	2	105	114	113	A	R93	5720L2151	435002116R
			1 3/4" Z6	35	2	105	114	113	A	R09	5720L0455	435000419R
			1 3/4" Z20	35	2	105	114	113	A	R10	5720L3855	435000419R
S9	34.9	106.0	1 3/8" Z6	35	7	109	110	124	C	R07	5720M0351	435000332R
			1 3/8" Z21	35	2	109	110	124	C	R08	5720M3751	435000332R
			D8x32x38	35	2	109	110	124	C	R93	5720M2153	435002118R
			1 3/4" Z6	35	2	109	110	124	C	R09	5720M0451	435000425R
			1 3/4" Z20	35	2	109	110	124	C	R10	5720M3851	435000425R
SH	42.0	107.5	1 3/8" Z6	35	7	109	130	130	C	R07	5720N0351	435000328R
			1 3/8" Z21	35	2	109	130	130	C	R08	5720N3751	435000328R
			1 3/4" Z6	35	2	109	130	130	C	R09	5720N0451	435000423R
			1 3/4" Z20	35	2	109	130	130	C	R10	5720N3851	435000423R
S0	42.0	130.0	1 3/8" Z6	35	7	111	130	151	C	R07	5720S0351	435000328R
			1 3/8" Z21	35	2	111	130	151	C	R08	5720S3751	435000328R
			1 3/4" Z6	35	2	111	130	151	C	R09	5720S0451	435000423R
			1 3/4" Z20	35	2	111	130	151	C	R10	5720S3851	435000423R
SK	50.0	140.0	1 3/4" Z6	50	13	132	160	165	D	R09	5720K0451	*435000429R
			1 3/4" Z20	50	2	132	160	165	D	R10	5720K3851	*435000429R
			2 1/4" Z22	60	10	135	160	165	D	R94	5720K8051	435008002R

* Per mozzi aventi D=60 mm ordinare kit collare a sfere RT codice 435000427R oppure forcella completa con collare a sfere RT

Forcelle per giunto cardanico semplice

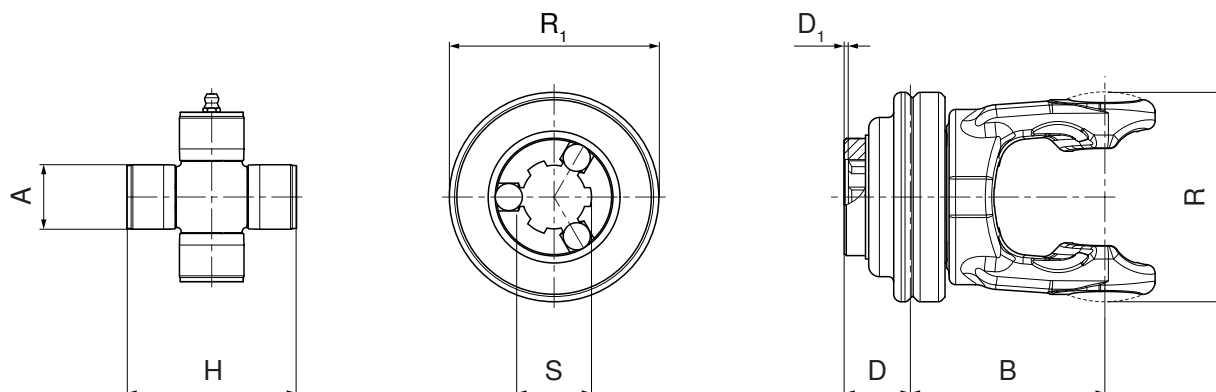
Forcelle con collare a sfere automatico RTA




Forcelle per giunto cardanico semplice

Forcelle con collare a sfere automatico

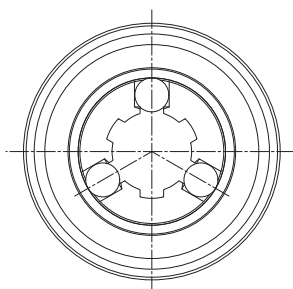
RTA



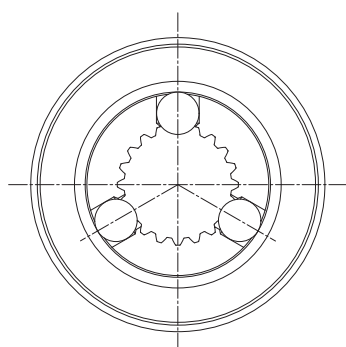
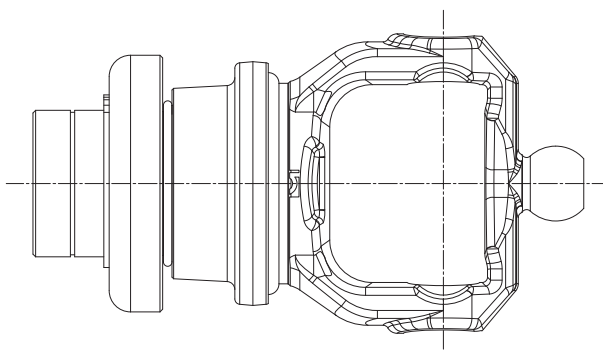
	A	H	S	D	D ₁	B	R ₁	R	Codice forcella	Codice ricambio	
	mm	mm		mm	mm	mm	mm	mm			
S1	22.0	54.0	--	--	--	--	--	--	--	--	--
S2	23.8	61.3	--	--	--	--	--	--	--	--	--
S4	27.0	74.6	1 3/8" Z6 1 3/8" Z21	31 31	2 2	85 85	98 98	89 89	0Q7 0Q8	5720E0361 5720E3761	435000359R 435000359R
S5 - S6	30.2	79.4	1 3/8" Z6 1 3/8" Z21 1 3/4" Z6 1 3/4" Z20	31 31 31 31	2 2 2 2	91 91 95 95	98 98 110 110	98 98 98 98	0Q7 0Q8 0Q9 0Q0	5720G0361 5720G3761 5720G0461 5720G3861	435000359R 435000359R 435000411R 435000411R
H7	30.2	91.5	1 3/8" Z6 1 3/8" Z21 1 3/4" Z6 1 3/4" Z20	31 31 31 31	2 2 2 2	98 98 100 100	98 98 110 110	108 108 108 108	0Q7 0Q8 0Q9 0Q0	5720H0361 5720H3761 5720H0461 5720H3861	435000359R 435000359R 435000411R 435000411R
S8 - H8	34.9	93.5	1 3/8" Z6 1 3/8" Z21 1 3/4" Z6 1 3/4" Z20	35 35 35 35	7 2 2 2	105 105 105 105	110 110 110 110	113 113 113 113	0Q7 0Q8 0Q9 0Q0	5720L0361 5720L3761 5720L0461 5720L3861	435000312R 435000312R 435000411R 435000411R
S9	34.9	106.0	1 3/8" Z6 1 3/8" Z21 1 3/4" Z6 1 3/4" Z20	35 35 35 35	7 2 2 2	109 109 109 109	110 110 110 110	124 124 124 124	0Q7 0Q8 0Q9 0Q0	5720M0361 5720M3761 5720M0461 5720M3861	435000312R 435000312R 435000411R 435000411R
SH	42.0	107.5	1 3/8" Z6 1 3/8" Z21 1 3/4" Z6 1 3/4" Z20	35 35 35 35	7 2 2 2	109 109 109 109	130 130 130 130	130 130 130 130	0Q7 0Q8 0Q9 0Q0	5720N0352 5720N3752 5720N0452 5720N3852	435000329R 435000329R 435000424R 435000424R
S0	42.0	130.0	1 3/8" Z6 1 3/8" Z21 1 3/4" Z6 1 3/4" Z20	35 35 35 35	7 2 2 2	111 111 111 111	130 130 130 130	151 151 151 151	0Q7 0Q8 0Q9 0Q0	5720S0352 5720S3752 5720S0452 5720S3852	435000329R 435000329R 435000424R 435000424R
SK	50.0	140.0	--	--	--	--	--	--	--	--	--

Forcelle per giunto omocinetico a 80°

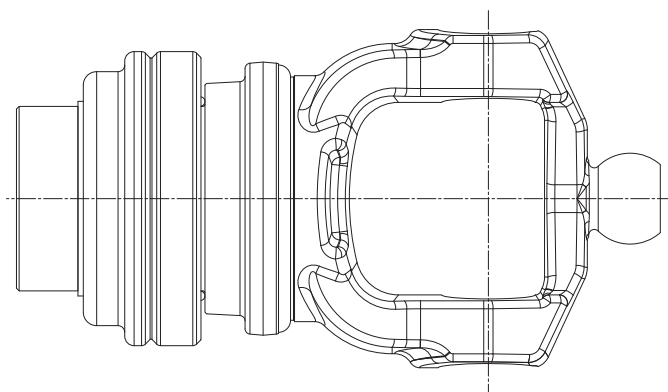
Forcelle con collare a sfere RT LATO TRATTORE



Collare tipo A

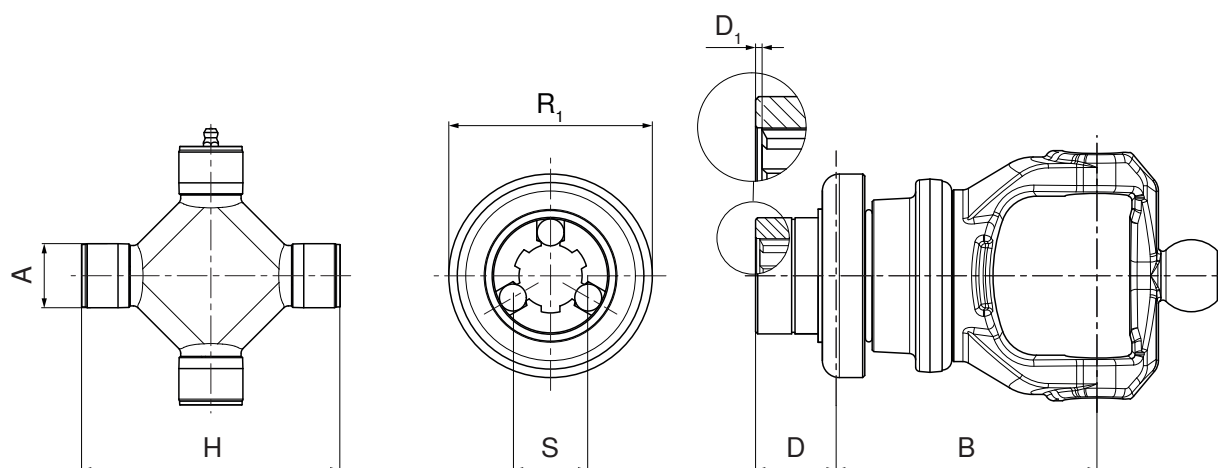



Collare tipo B



Forcelle per giunto omocinetico a 80°

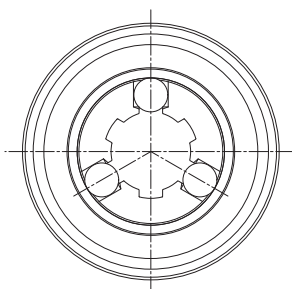
Forcelle con collare a sfere LATO TRATTORE
RT



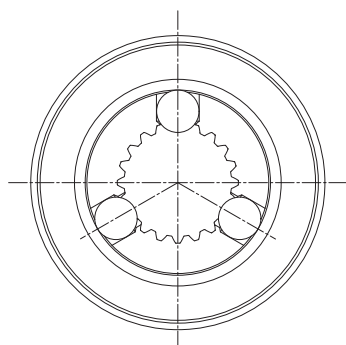
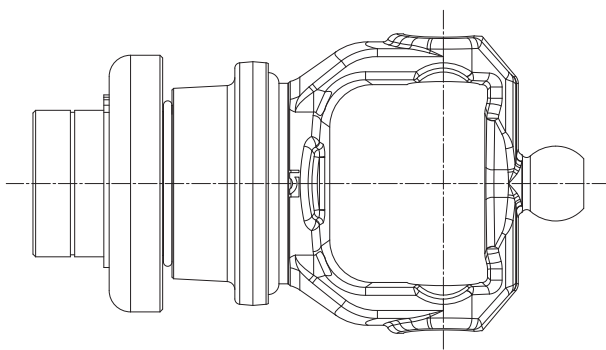
	A ₁ mm	H ₁ mm	S	R ₁ mm	D mm	D ₁ mm	B mm	Tipo p. 13.4	Codice forcella	Codice ricambio	
S1	--	--	--	--	--	--	--	--	--	--	--
S2	22.0	76.0	1 3/8" Z6	96	31	2	95	A	WR7	5730C0378	435000323R
			1 3/8" Z21	96	31	2	95	A	WR8	5730C3778	435000323R
			D8x32x38	100	31	2	97	A	WR6	5730C2154	435002121R
S4	22.0	86.0	1 3/8" Z6	96	29	2	103	A	WR7	5730E0384	435000323R
			1 3/8" Z21	96	40	2	91	A	WR8	5730E3784	435000323R
			D8x32x38	100	29	2	103	A	WR6	5730E2154	435002121R
			1 3/4" Z6	114	40	2	109	A	WR9	5730E0484	435000420R
			1 3/4" Z20	114	40	2	109	A	WR0	5730E3884	435000420R
S5	--	--	--	--	--	--	--	--	--	--	
S6 - H7	27.0	100.0	1 3/8" Z6	96	35	7	119	A	WR7	5730G0384	435000323R
			1 3/8" Z21	96	40	2	106	A	WR8	5730G3784	435000323R
			D8x32x38	100	35	2	119	A	WR6	5730G2154	435002121R
			1 3/4" Z6	114	40	2	120	A	WR9	5730G0484	435000420R
			1 3/4" Z20	114	40	2	120	A	WR0	5730G3884	435000420R
S8 - H8	30.2	106.0	1 3/8" Z6	96	38	2	123	A	WS7	5730L0387	435000323R
			1 3/8" Z21	96	40	2	114	A	WR8	5730L3784	435000323R
			D8x32x38	100	35	2	126	A	WR6	5730L2154	435002121R
			1 3/4" Z6	114	40	2	127	A	WR9	5730L0484	435000420R
			1 3/4" Z20	114	50	2	127	A	WS0	5730L3887	435000420R
S9	30.2	122.0	1 3/8" Z6	113	38	2	115	B	WS7	5730M0387	435000314R
			1 3/8" Z21	113	40	2	108	B	WR8	5730M3776	435000314R
			D8x32x38	100	38	2	125	A	WR6	5730M2154	435002121R
			1 3/4" Z6	110	40	2	126	B	WR9	5730M0476	435000425R
			1 3/4" Z20	110	50	2	126	B	WS0	5730M3887	435000425R
SH	34.9	112.0	1 3/8" Z6	113	38	2	116	B	WS7	5730N0387	435000314R
			1 3/8" Z21	113	40	2	109	B	WR8	5730N3776	435000314R
			D8x32x38	100	38	2	126	A	WR6	5730N2154	435002121R
			1 3/4" Z6	110	40	2	127	B	WR9	5730N0476	435000425R
			1 3/4" Z20	110	50	2	127	B	WS0	5730N3887	435000425R
S0	--	--	--	--	--	--	--	--	--	--	
SK	--	--	--	--	--	--	--	--	--	--	

Forcelle per giunto omocinetico a 80°

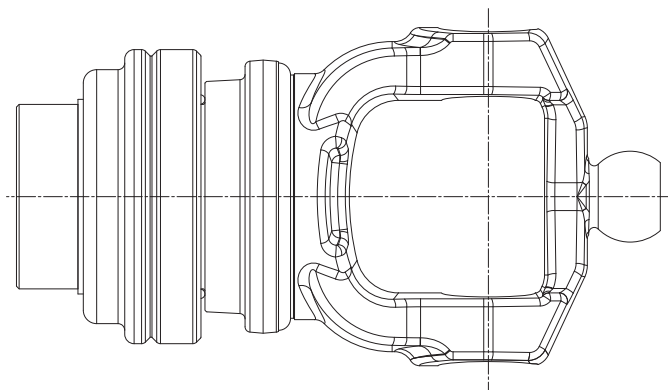
Forcelle con collare a sfere RT LATO MACCHINA



Collare tipo A



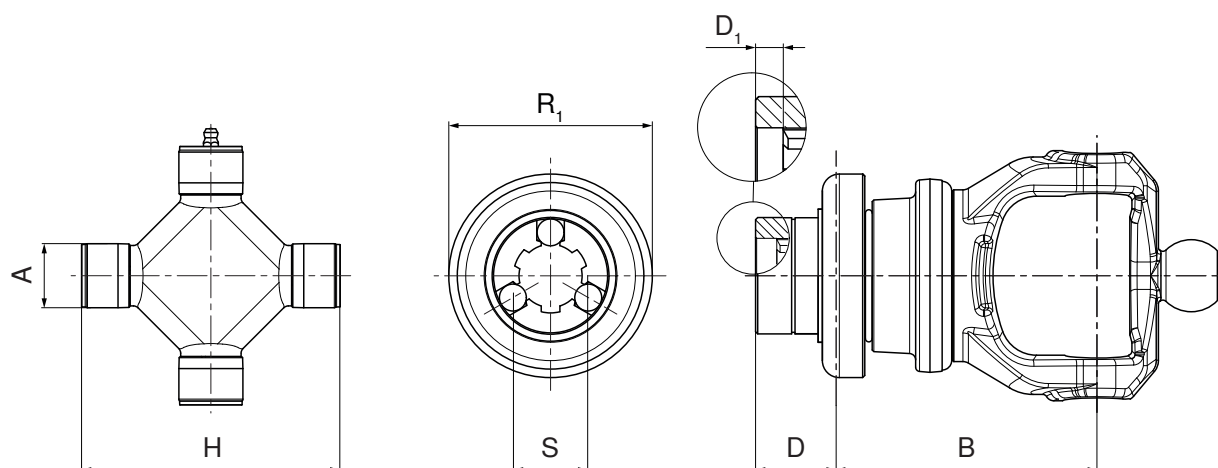
Collare tipo B



Forcelle per giunto omocinetico a 80°

Forcelle con collare a sfere LATO MACCHINA

RT

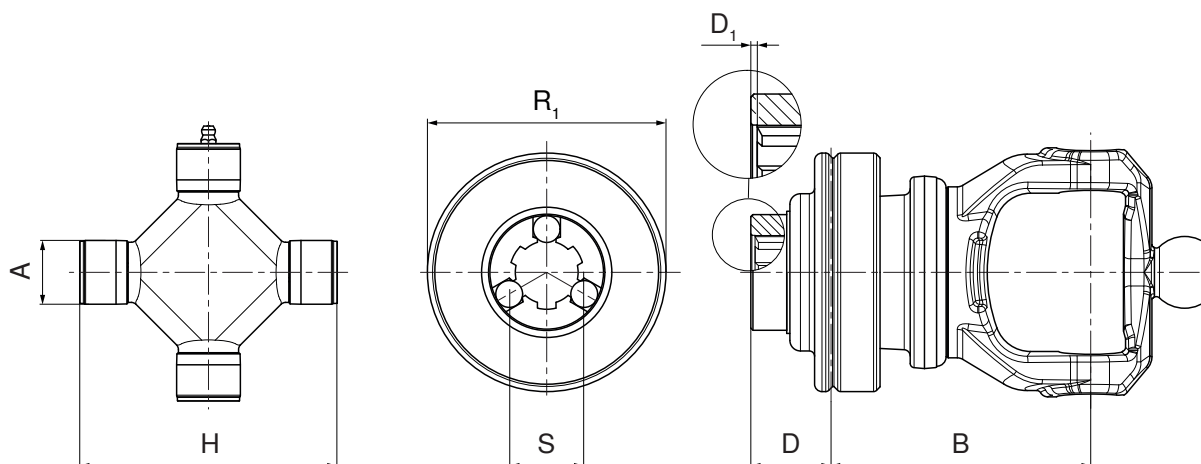



	A ₁ mm	H ₁ mm	S	R ₁ mm	D mm	D ₁ mm	B mm	Tipo p. 13.6	Codice forcella	Codice ricambio	
S1	--	--	--	--	--	--	--	--	--	--	--
S2	22.0	76.0	1 3/8" Z6	96	31	2	95	A	WR7	5730C0378	435000323R
			1 3/8" Z21	96	31	2	95	A	WR8	5730C3778	435000323R
			D8x32x38	100	31	2	97	A	WR6	5730C2154	435002121R
S4	22.0	86.0	1 3/8" Z6	96	29	2	103	A	WR7	5730E0384	435000323R
			1 3/8" Z21	96	40	2	91	A	WR8	5730E3784	435000323R
			D8x32x38	100	29	2	103	A	WR6	5730E2154	435002121R
			1 3/4" Z6	114	40	2	109	A	WR9	5730E0484	435000420R
1 3/4" Z20	114	40	2	109	A	WR0	5730E3884	435000420R			
S5	--	--	--	--	--	--	--	--	--	--	
S6 - H7	27.0	100.0	1 3/8" Z6	96	35	7	119	A	WR7	5730G0384	435000323R
			1 3/8" Z21	96	40	2	106	A	WR8	5730G3784	435000323R
			D8x32x38	100	35	2	119	A	WR6	5730G2154	435002121R
			1 3/4" Z6	114	40	2	120	A	WR9	5730G0484	435000420R
			1 3/4" Z20	114	40	2	120	A	WR0	5730G3884	435000420R
S8 - H8	30.2	106.0	1 3/8" Z6	96	38	10	123	A	WR7	5730L0384	435000323R
			1 3/8" Z21	96	40	2	114	A	WR8	5730L3784	435000323R
			D8x32x38	100	35	2	126	A	WR6	5730L2154	435002121R
			1 3/4" Z6	114	40	2	127	A	WR9	5730L0484	435000420R
			1 3/4" Z20	114	50	14	127	A	WR0	5730L3884	435000420R
S9	30.2	122.0	1 3/8" Z6	113	38	10	115	B	WR7	5730M0376	435000314R
			1 3/8" Z21	113	40	2	108	B	WR8	5730M3776	435000314R
			D8x32x38	100	38	2	125	A	WR6	5730M2154	435002121R
			1 3/4" Z6	110	40	2	126	B	WR9	5730M0476	435000425R
			1 3/4" Z20	110	50	14	126	B	WR0	5730M3876	435000425R
SH	34.9	112.0	1 3/8" Z6	113	38	10	116	B	WR7	5730N0376	435000314R
			1 3/8" Z21	113	40	2	109	B	WR8	5730N3776	435000314R
			D8x32x38	100	38	2	126	A	WR6	5730N2154	435002121R
			1 3/4" Z6	110	40	2	127	B	WR9	5730N0476	435000425R
			1 3/4" Z20	110	50	14	127	B	WR0	5730N3876	435000425R
S0	--	--	--	--	--	--	--	--	--	--	
SK	--	--	--	--	--	--	--	--	--	--	

Forcelle per giunto omocinetico a 80°

Forcelle con collare a sfere automatico LATO TRATTORE

RTA

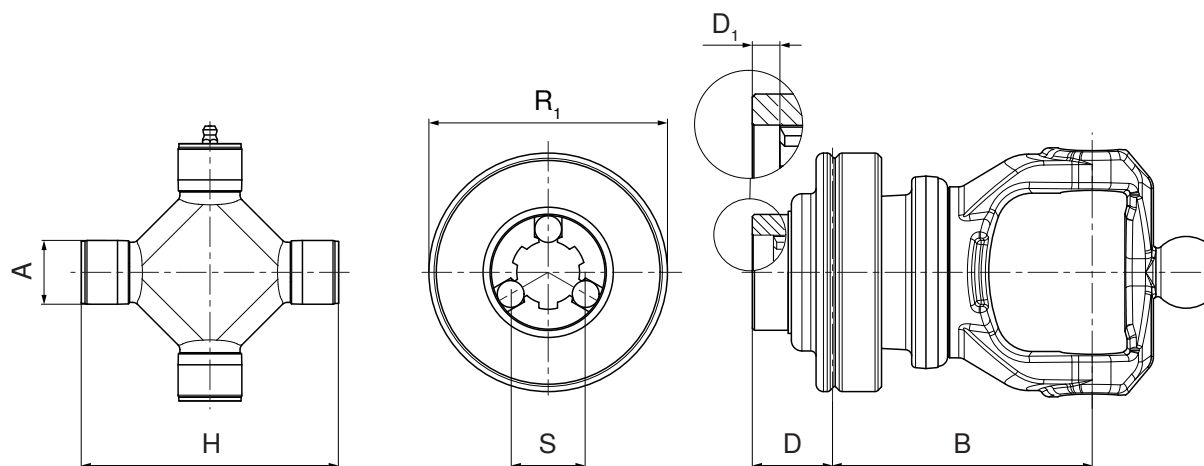



	A ₁ mm	H ₁ mm	S	R ₁ mm	D mm	D ₁ mm	B mm	Codice forcella	Codice ricambio	
S1	--	--	--	--	--	--	--	--	--	--
S2	--	--	--	--	--	--	--	--	--	--
S4	22.0	86.0	1 3/8" Z6	98	29	2	103	WQ7	5730E0391	435000359R
			1 3/8" Z21	98	40	2	91	WQ8	5730E3791	435000359R
			1 3/4" Z6	110	40	2	109	WQ9	5730E0491	435000411R
			1 3/4" Z20	110	40	2	109	WQ0	5730E3891	435000411R
S5	--	--	--	--	--	--	--	--	--	
S6 - H7	27.0	100.0	1 3/8" Z6	98	35	7	119	WQ7	5730G0391	435000359R
			1 3/8" Z21	98	40	2	106	WQ8	5730G3791	435000359R
			1 3/4" Z6	110	40	2	120	WQ9	5730G0491	435000411R
			1 3/4" Z20	110	40	2	120	WQ0	5730G3891	435000411R
S8 - H8	30.2	106.0	1 3/8" Z6	98	38	2	123	WP7	5730L0392	435000359R
			1 3/8" Z21	98	40	2	114	WQ8	5730L3791	435000359R
			1 3/4" Z6	110	40	2	127	WQ9	5730L0491	435000411R
			1 3/4" Z20	110	50	2	127	WP0	5730L3892	435000411R
S9	30.2	122.0	1 3/8" Z6	113	38	2	115	WP7	5730M0392	435000311R
			1 3/8" Z21	113	40	2	108	WQ8	5730M3791	435000311R
			1 3/4" Z6	110	40	2	126	WQ9	5730M0491	435000411R
			1 3/4" Z20	110	50	2	126	WP0	5730M3892	435000411R
SH	34.9	112.0	1 3/8" Z6	113	38	2	116	WP7	5730N0392	435000311R
			1 3/8" Z21	113	40	2	109	WQ8	5730N3791	435000311R
			1 3/4" Z6	110	40	2	127	WQ9	5730N0491	435000411R
			1 3/4" Z20	110	50	2	127	WP0	5730N3892	435000411R
S0	--	--	--	--	--	--	--	--	--	
SK	--	--	--	--	--	--	--	--	--	

Forcelle per giunto omocinetico a 80°

Forcelle con collare a sfere automatico LATO MACCHINA

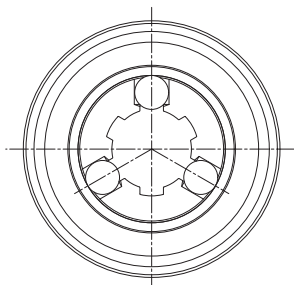
RTA



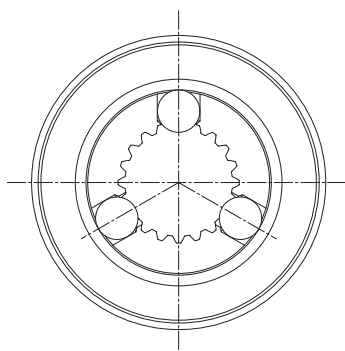
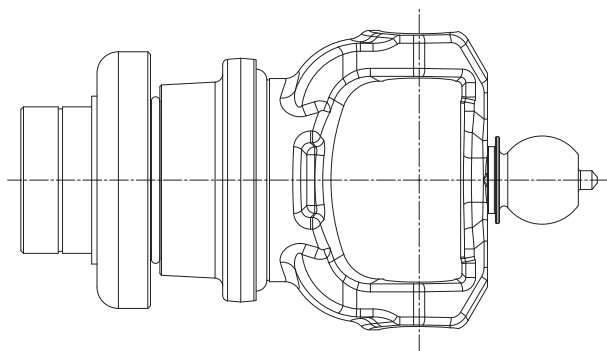
	A ₁ mm	H ₁ mm	S	R ₁ mm	D mm	D ₁ mm	B mm	Codice forcella	Codice ricambio	
S1	--	--	--	--	--	--	--	--	--	--
S2	--	--	--	--	--	--	--	--	--	--
S4	22.0	86.0	1 3/8" Z6	98	29	2	103	WQ7	5730E0391	435000359R
			1 3/8" Z21	98	40	2	91	WQ8	5730E3791	435000359R
			1 3/4" Z6	110	40	2	109	WQ9	5730E0491	435000411R
			1 3/4" Z20	110	40	2	109	WQ0	5730E3891	435000411R
S5	--	--	--	--	--	--	--	--	--	
S6 - H7	27.0	100.0	1 3/8" Z6	98	35	7	119	WQ7	5730G0391	435000359R
			1 3/8" Z21	98	40	2	106	WQ8	5730G3791	435000359R
			1 3/4" Z6	110	40	2	120	WQ9	5730G0491	435000411R
			1 3/4" Z20	110	40	2	120	WQ0	5730G3891	435000411R
S8 - H8	30.2	106.0	1 3/8" Z6	98	38	10	123	WQ7	5730L0391	435000359R
			1 3/8" Z21	98	40	2	114	WQ8	5730L3791	435000359R
			1 3/4" Z6	110	40	2	127	WQ9	5730L0491	435000411R
			1 3/4" Z20	110	50	14	127	WQ0	5730L3891	435000411R
S9	30.2	122.0	1 3/8" Z6	113	38	10	115	WQ7	5730M0391	435000311R
			1 3/8" Z21	113	40	2	108	WQ8	5730M3791	435000311R
			1 3/4" Z6	110	40	2	126	WQ9	5730M0491	435000411R
			1 3/4" Z20	110	50	14	126	WQ0	5730M3891	435000411R
SH	34.9	112.0	1 3/8" Z6	113	38	10	116	WQ7	5730N0391	435000311R
			1 3/8" Z21	113	40	2	109	WQ8	5730N3791	435000311R
			1 3/4" Z6	110	40	2	127	WQ9	5730N0491	435000411R
			1 3/4" Z20	110	50	14	127	WQ0	5730N3891	435000411R
S0	--	--	--	--	--	--	--	--	--	
SK	--	--	--	--	--	--	--	--	--	

Forcelle per giunto omocinetico a 50°

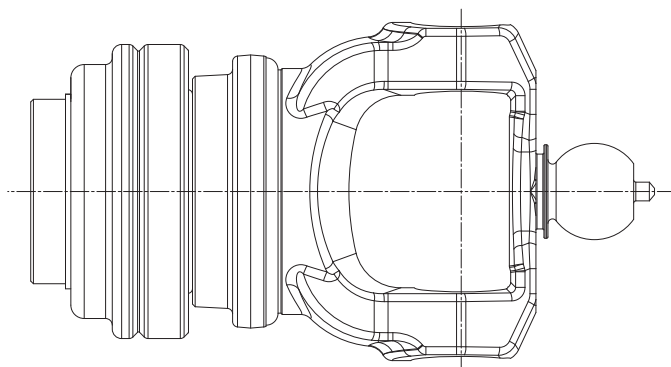
Forcelle con collare a sfere RT



Collare tipo A



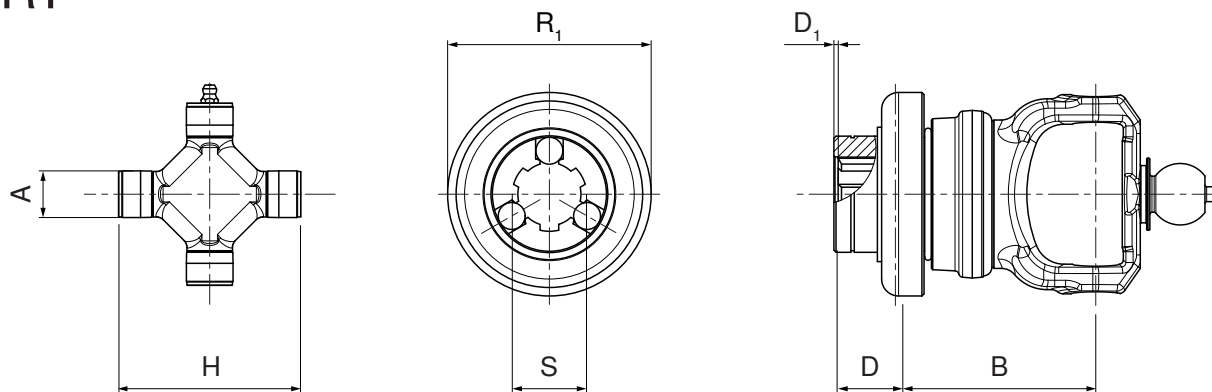
Collare tipo B




Forcelle per giunto omocinetico a 50°

Forcelle con collare a sfere

RT



	A ₁ mm	H ₁ mm	S	R ₁ mm	D mm	D ₁ mm	B mm	Tipo p. 14.3	Codice forcella	Codice ricambio	
S1	--	--	--	--	--	--	--	--	--	--	--
S2	--	--	--	--	--	--	--	--	--	--	--
S4	22.0	86.0	1 3/8" Z6	96	29	2	95	A	KR7	5730E0353	435000323R
			1 3/8" Z21	96	40	2	82	A	KR8	5730E3753	435000323R
			D8x32x38	100	29	2	95	A	KR6	5730E2155	435002121R
			1 3/4" Z6	114	40	2	100	A	KR9	5730E0453	435000420R
			1 3/4" Z20	114	40	2	100	A	KR0	5730E3853	435000420R
S5	--	--	--	--	--	--	--	--	--	--	--
S6 -H7	27.0	100.0	1 3/8" Z6	96	35	7	114	A	KR7	5730G0353	435000323R
			1 3/8" Z21	96	40	2	102	A	KR8	5730G3753	435000323R
			D8x32x38	100	35	2	114	A	KR6	5730G2155	435002121R
			1 3/4" Z6	114	40	2	115	A	KR9	5730G0453	435000420R
			1 3/4" Z20	114	40	2	115	A	KR0	5730G3853	435000420R
S8 -H8	30.2	106.0	1 3/8" Z6	96	35	7	114	A	KR7	5730L0353	435000323R
			1 3/8" Z21	96	40	2	102	A	KR8	5730L3753	435000323R
			D8x32x38	100	35	2	114	A	KR6	5730L2155	435002121R
			1 3/4" Z6	114	40	2	115	A	KR9	5730L0453	435000420R
			1 3/4" Z20	114	40	2	115	A	KR0	5730L3853	435000420R
S9 -SH	34.9	112.0	1 3/8" Z6	113	35	7	113	B	KR7	5730N0355	435000314R
			1 3/8" Z21	113	40	2	103	B	KR8	5730N3755	435000314R
			D8x32x38	100	38	2	120	A	KR6	5730N2155	435002121R
			1 3/4" Z6	110	40	2	121	B	KR9	5730N0455	435000425R
			1 3/4" Z20	110	40	2	121	B	KR0	5730N3855	435000425R
S0	--	--	--	--	--	--	--	--	--	--	--
SK	--	--	--	--	--	--	--	--	--	--	--