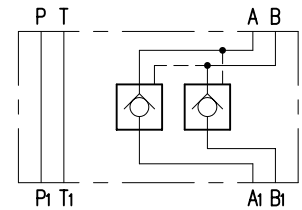


CETOP 03 4.2-4-03



n°2 Parbak 8-017 - 0591871 (0591934)

n°2 OR 2068 - 0590301 (0590457)

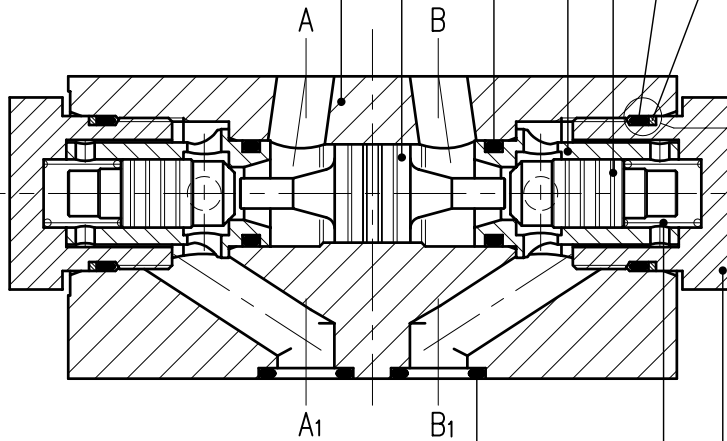
n°2 0134301

n°2 0134302

n°2 OR 2043 - 0590297 (0590497)

0134300

0134304



n°4 OR 2037 - 0592082 (0590542)

n°2 0134607

n°2 0134303

Coppia di serraggio/Tightening torque 35÷40 Nm

Targa/Identification plate 3001 04 0001

n°2 Rivetto/Rivet 1.9x5 - 0530521

CODICE CODE	SIGLA IDENTIFICATION	PRESSIONE INIZIO APERTURA CRACKING PRESSURE
1402300	MVPP-D/50/IC	~15 bar

I codici tra parentesi si riferiscono alle guarnizioni in VITON/Codes in brackets refers to seals in VITON

REV. A) RIFATTA TABELLA CON AUTOCAD - 09.02.2004 - S. Garavaglia