

MCM-MCMS



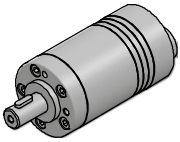
NEW!

MOTEUR "Z-J HYDRAULIC"
"Z-J HYDRAULIC" MOTOR

ARBRE CYLINDRIQUE Ø16
PARALLEL SHAFT Ø16

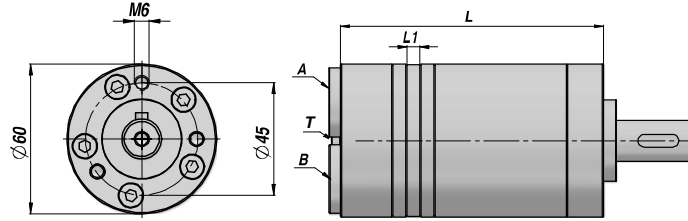
SANS BRIDE
WITHOUT FLANGE

ALIMENTATIONS ARRIERES - REAR PORTS

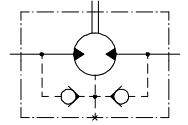
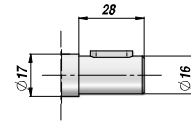


PEINTURE NOIRE
BLACK PAINTED

PREDISPOSITION POUR DRAINAGE
MACHINED FOR DRAIN CONNECTION



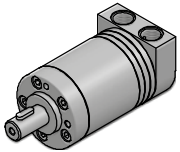
CLAPET ANTI-RETOUR
INTEGRE
BUILT-IN CHECK VALVES



Code Code	Type Type	cm ³ /tr cm ³ /rev	n. Max tours/min rpm	M Max daNm	Q MAX l/min	P MAX bar			A - B	T	L	L1	kg
						Chute Drop Δp	Entrée Inlet	Retour Return					
TRAVAIL EN CONTINU - CONTINUOUS WORK													
MCM00008C0	MC-M 08 C	8.2	1950	11	16	100	140	140*	3/8"	1/8"	104.0	3.5	1,90
MCM00012C0	MC-M 12 C	12.9	1550	16	20	100	140	140*			106.0	5.5	2,00
MCM00020C0	MC-M 20 C	19.9	1000	25	20	100	140	140*			109.0	8.5	2,10
MCM00032C0	MC-M 32 C	31.6	630	40	20	100	140	140*			114.0	13.5	2,20
MCM00040C0	MC-M 40 C	39.8	500	45	20	90	140	140*			117.5	17.0	2,30
MCM00050C0	MC-M 50 C	50.3	400	46	20	70	140	140*			122.0	21.5	2,40

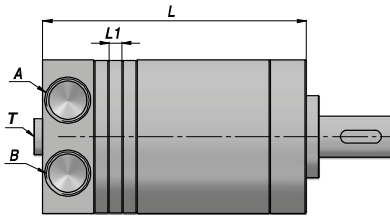
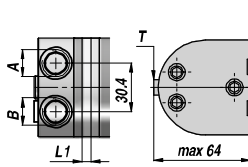
* = AVEC DRAINAGE - WITH DRAIN

ALIMENTATIONS LATERALES - SIDE PORTS

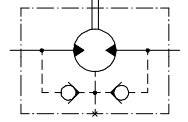
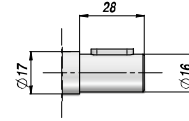


PEINTURE NOIRE
BLACK PAINTED

PREDISPOSITION POUR DRAINAGE
MACHINED FOR DRAIN CONNECTION



CLAPET ANTI-RETOUR
INTEGRE
BUILT-IN CHECK VALVES



Code Code	Type Type	cm ³ /tr cm ³ /rev	n. Max tours/min rpm	M Max daNm	Q MAX l/min	P MAX bar			A - B	T	L	L1	kg
						Chute Drop Δp	Entrée Inlet	Retour Return					
TRAVAIL EN CONTINU - CONTINUOUS WORK													
MCM00S08C0	MC-MS 08 C	8.2	1950	11	16	100	140	140*	3/8"	1/8"	105.0	3.5	1,90
MCM00S12C0	MC-MS 12 C	12.9	1550	16	20	100	140	140*			107.0	5.5	2,00
MCM00S20C0	MC-MS 20 C	19.9	1000	25	20	100	140	140*			110.0	8.5	2,10
MCM00S32C0	MC-MS 32 C	31.6	630	40	20	100	140	140*			115.0	13.5	2,20
MCM00S40C0	MC-MS 40 C	39.8	500	45	20	90	140	140*			118.5	17.0	2,30
MCM00S50C0	MC-MS 50 C	50.3	400	46	20	70	140	140*			123.0	21.5	2,40

* = AVEC DRAINAGE - WITH DRAIN

PRESSION MAXI EN RETOUR SANS DRAINAGE
MAX. RETURN PRESSURE WITHOUT DRAIN



CHARGES ADMISSIBLES SUR L'ARBRE
PERMISSIBLE SHAFT LOADS

