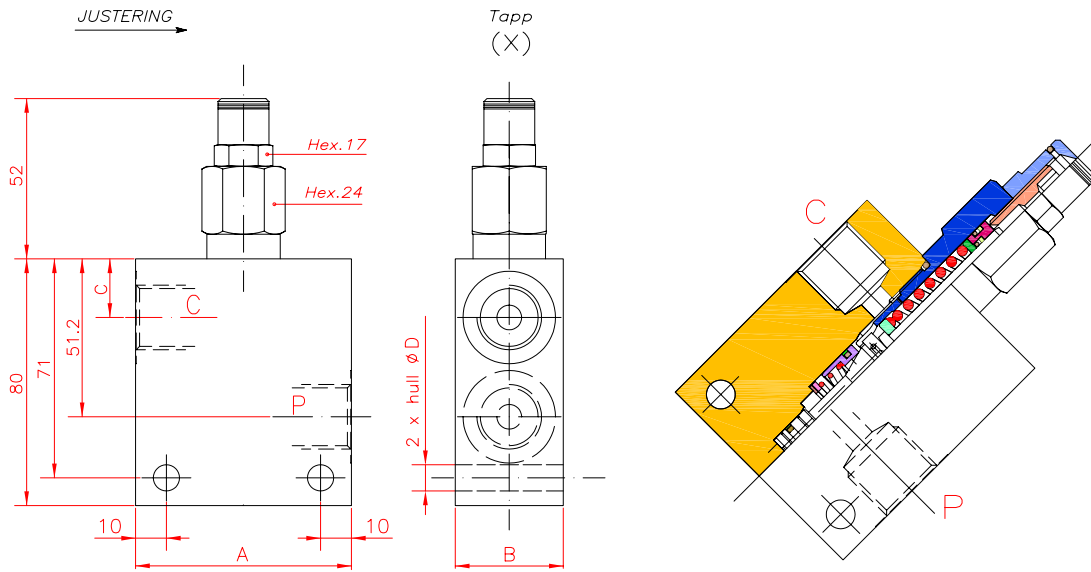


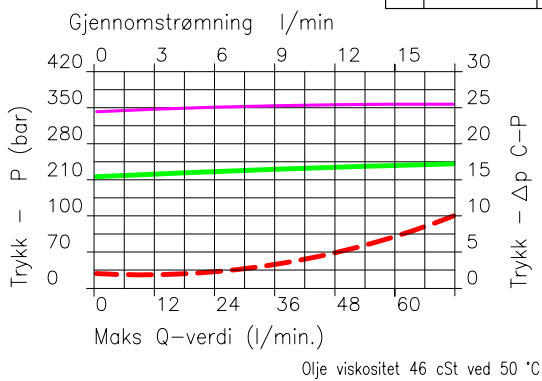
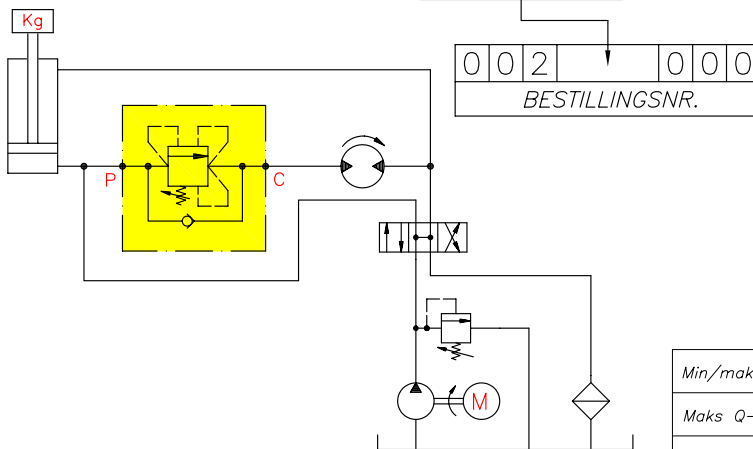


**EGIL ENG & CO. AS**

# SEKVENSVENTIL, 1/2", 60-350 bar



VENTIL TYPE	Innst. område 30 ÷ 220 bar (Farge grønt)		Innst. område 60 ÷ 350 bar (Farge gult)		A	B	C	D	Port dia. V2-C2 V1-C1 BSPP	Nom. dia. DN	Maks Q-verdi l/min
	Std. bar innst. (ved Q=5 l/min) 210 bar	Trykk økning bar/omdr. (56)	Std. bar innst. (ved Q=5 l/min) 350 bar	Trykk økning bar/omdr. (138)							
VSQ-D-C-38-CC-*	688		687		60	30	21	6.5	3/8"	8	40
VSQ-D-C-12-CC-*	690		689		70	35	19	8.5	1/2"	10	60



Min/maks nominell dia.	DN	6 / 10
Maks Q-verdi	l/min	60
Maks arbeidstrykk		450 bar
Maks innst. trykk		350 bar
Min/maks Romtemperatur	°C	-30 +50
Min/maks oljetemperatur	°C	-30 +80
Filtrering	micron	30

## EKSEMPEL:

Maks tillatt arbeidstrykk  $\frac{450 \text{ bar}}{1.3} \sim 350 \text{ bar}$

Standard ventilhus i stål, aluminiumhus pr. bestilling.

# LUEN