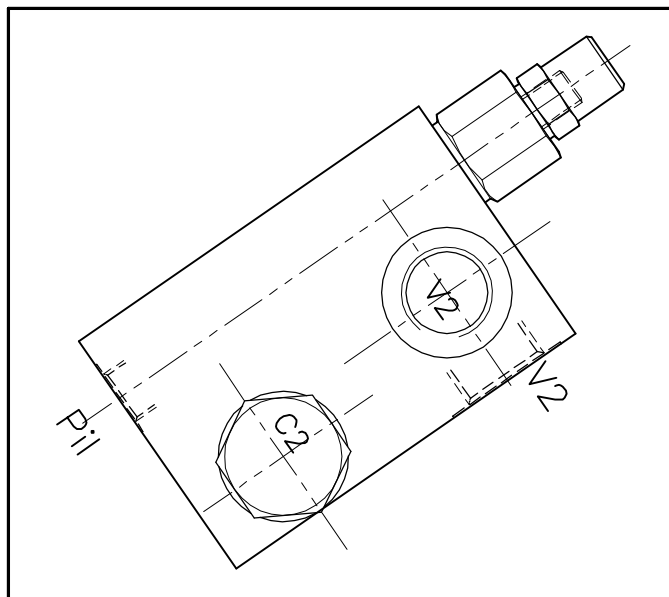
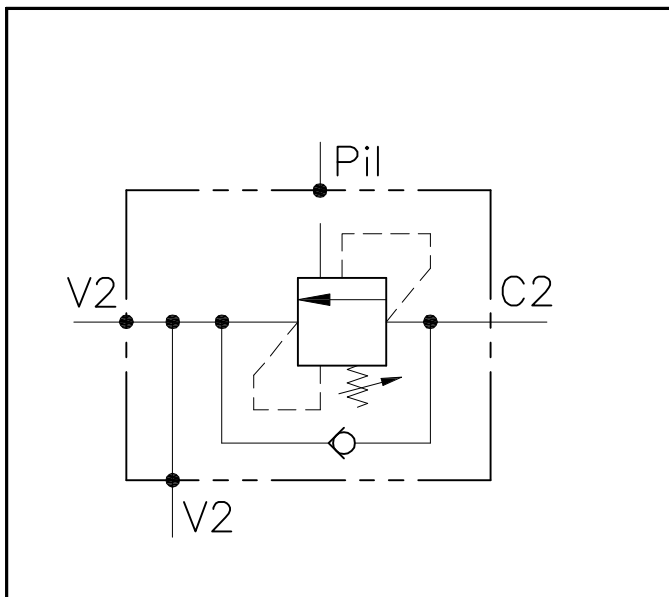


VALVOLA BILANCIAMENTO, BLOCCO E CONTROLLO MOVIMENTO A SEMPLICE EFFETTO CON COLLETTORE FLANGIATO, SERIE "OWC"
SINGLE COUNTERBALANCE VALVE WITH FLANGEABLE BODY, "OWC" SERIES

LUEN

HYDRAULIC VALVES AND INTEGRATED COMPONENTS
s.r.l. ITALY

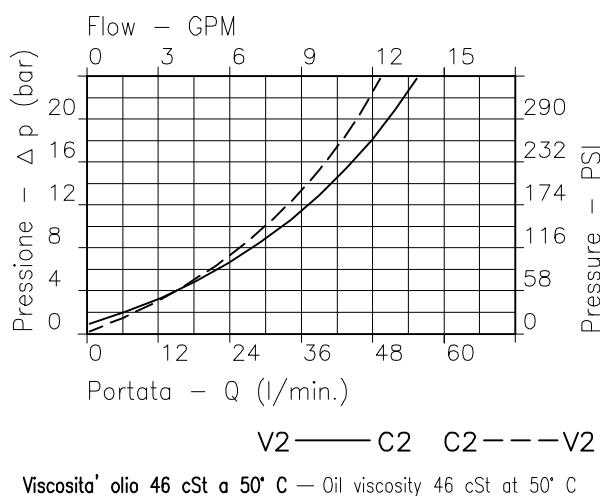
OWC-SE-12-14-FCB-RS-SRO-...



CARATTERISTICHE - PERFORMANCES

Luce nominale <i>Rated size</i>	DN	8
Portata min/max <i>Min/max flow-rate</i>	l/min-GPM	1/60 - 0.26/15.9
Pressione di lavoro max <i>Max working pressure</i>		450 bar 6525 PSI
Pressione max di taratura <i>Max setting pressure</i>		350 bar 5075 PSI
Rapporto di pilotaggio <i>Pilot ratio</i>		4.25 : 1
Temperatura ambiente <i>Room temperature</i>	°C	-30 +50
Temperatura olio <i>Oil temperature</i>	°C	-30 +80
Filtraggio consigliato <i>Recommended Filtration</i>	micron	30
Coppia di serraggio <i>Tightening torque</i>	Nm	.
Peso <i>Weight</i>	Kg	.

CARATTERISTICHE IDRAULICHE - HYDRAULIC PERFORMANCES



NOTE:

La taratura deve essere 1,3 volte maggiore della pressione indotta dal carico.

Valve should be set at 1.3 times load induced pressure.

ESEMPIO - EXAMPLE:

Pressione di lavoro max : $\frac{350 \text{ bar}}{1.3} = 270 \text{ bar}$
Max working pressure : $\frac{350 \text{ bar}}{1.3} = 270 \text{ bar}$

DIMENSIONI, INGOMBRI, CODICI DI ORDINAZIONE
OVERALL DIMENSIONS AND ORDERING CODE

L U E N

HYDRAULIC VALVES AND INTEGRATED COMPONENTS
s.r.l. ITALY

OWC-SE-12-14-FCB-RS-SRO-...

REGOLAZIONE
ADJUSTMENT

Grano Dowel (X)

Tappo Plug (Y)

Taratura fissa Fixed setting (Z)

Piombata Sealed (H)

Piombata Sealed (K)

		Campo taratura 30 ÷ 220 bar (Colore verde) Setting range 30 ÷ 220 bar (Colour green)		Campo taratura 60 ÷ 350 bar (Colore giallo) Setting range 60 ÷ 350 bar (Colour yellow)											
SIGLA VALVOLA VALVE CODE	Taratura standard (Q=5 1/1") Std. bar setting (made at 5 1/1") 210 bar	Incr. press. bar giro/vite Pressure rise turn of screw (56)	Taratura standard (Q=5 1/1") Std. bar setting (made at 5 1/1") 350 bar	Incr. press. bar giro/vite Pressure rise turn of screw (138)	G	N	P	Q	R	T	Attacchi Port size		Portata max		
											Pil. GAS (BSPP)	V2-C2 GAS (BSPP)	Max flow-rate		
OWC-SE-38-14-FCB-RS-SRO-*	...		478		59	32	30	24	32	55	1/4"	3/8"	40-10		
OWC-SE-12-14-FCB-RS-SRO-*	276		275		63	33	35	27	42	60	1/4"	1/2"	60-15		

0	0	1	0	0
CODICE ORDINAZIONE				
<i>ORDERING CODE</i>				

ESEMPIO TIPICO DI CIRCUITO
TYPICAL CIRCUIT EXAMPLE

