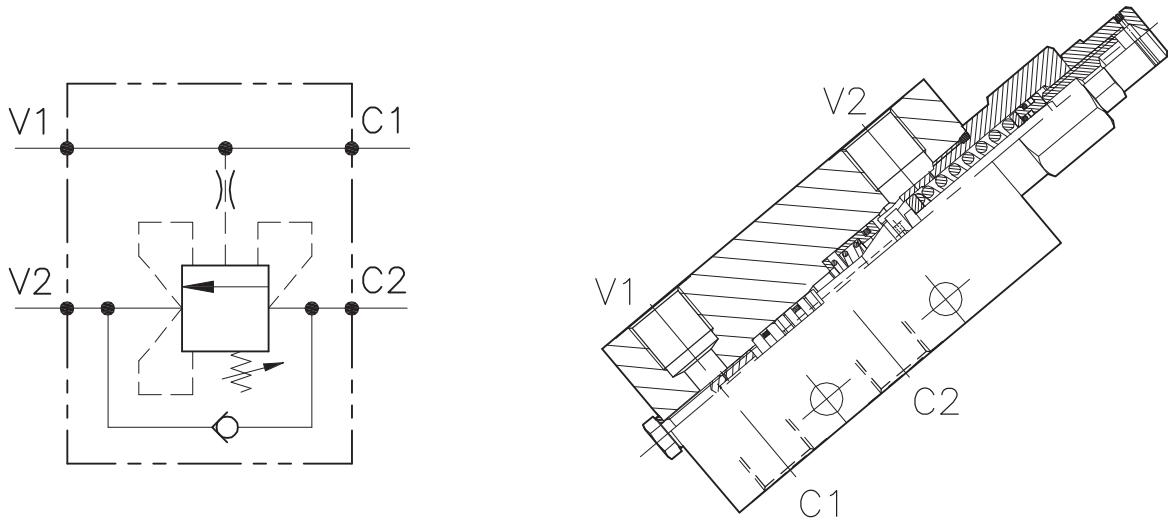


A-WB-CC-SE-...-L-...

VALVOLA BILANCIAMENTO, BLOCCO E CONTROLLO MOVIMENTO PER CENTRO CHIUSO CON COLLETTORE IN LINEA
COUNTERBALANCE VALVE FOR CLOSED CENTRE SPOOL WITH IN LINE BODY



CARATTERISTICHE

Luca nominale min/max	DN 6/8/10
Portata min/max	1/60 l/min - 0.26/15.9 GPM
Pressione max. di picco	450 bar - 6525 PSI
Pressione max. di taratura	350 bar - 5075 PSI
Rapporto di pilotaggio standard	4.25 : 1
Temperatura ambiente	-30°C + 50°C
Temperatura olio	-30°C + 80°C
Filtraggio consigliato	30 micron
Coppia di serraggio	
Peso	

PERFORMANCE

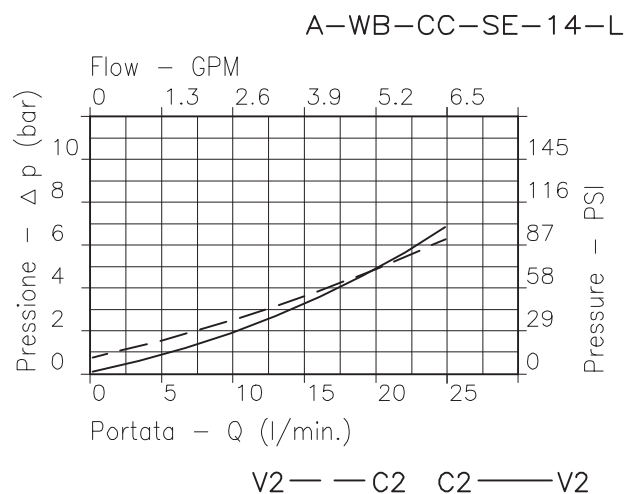
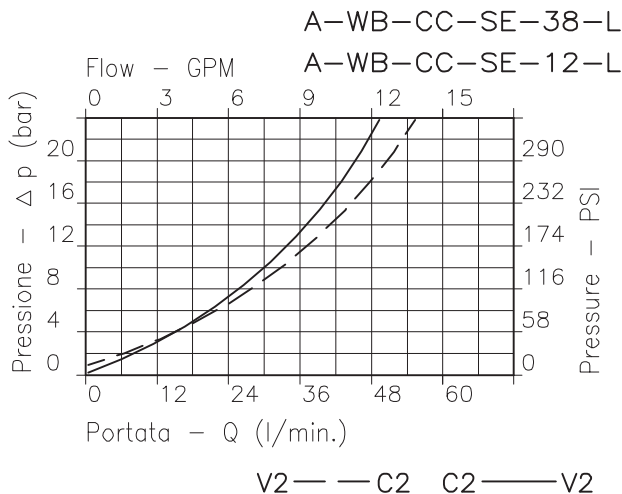
Min/max rated size
Min/max flow-rate
Max peak pressure
Max setting pressure
Standard pilot ratio
Room temperature
Oil temperature
Recommended filtration
Tightening torque
Weight

NOTE:

La taratura deve essere **1.3** volte maggiore della pressione indotta dal carico.
Valve should be set at **1.3** times load induced pressure.

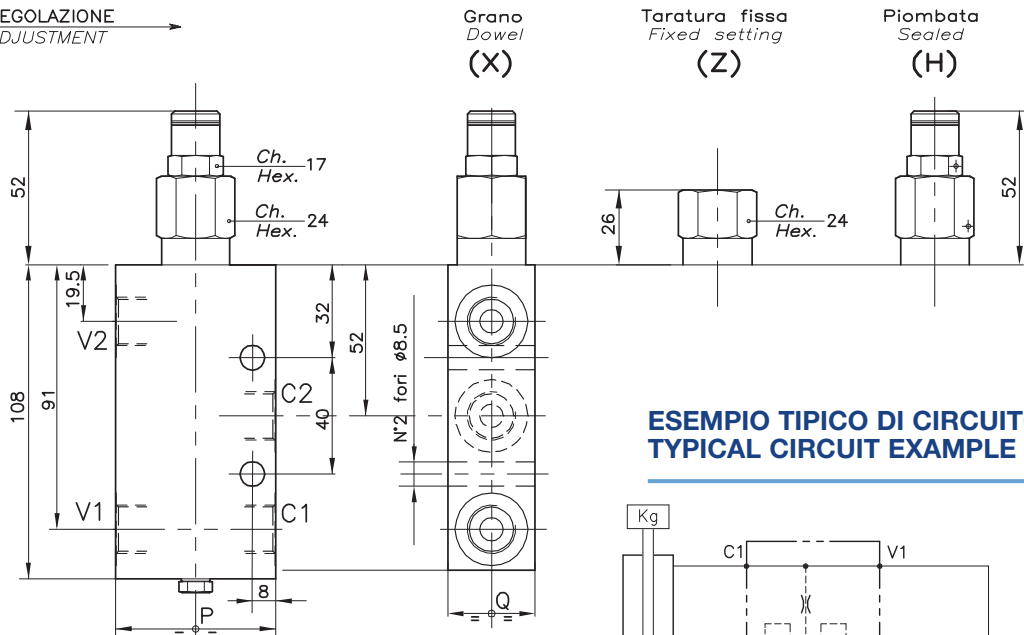
ESEMPIO/EXAMPLE:

Pressione di lavoro max **350 bar / 1.3 = 270 bar** Max working pressure

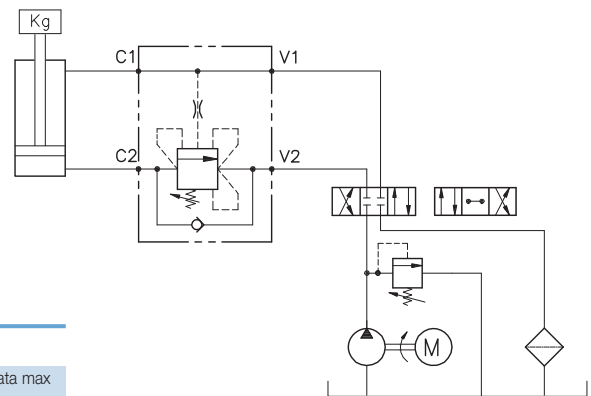


Viscosità olio 46 cSt a 50°C - Oil viscosity 46 cSt at 50°C

REGOLAZIONE
ADJUSTMENT →



ESEMPIO TIPICO DI CIRCUITO TYPICAL CIRCUIT EXAMPLE



DIMENSIONI DIMENSIONS

Campo taratura Setting range		P	Q	Attacchi Port size V2-C2 V1-C1 GAS (BSPP)	Luce nominale Rated size DN	Portata max Max flow-rate l/min - GPM
549	548	55	30	1/4"	6	20-5
446	447	55	30	3/8"	8	40-10
455	456	65	35	1/2"	10	60-15

CODICE DI ORDINAZIONE HOW TO ORDER

001 549 0 X 0

Campo taratura / Setting range			
549		548	
446		447	
455		456	
Campo taratura 30÷220 bar (molla colore giallo)		Campo taratura 60÷350 bar (molla colore rosso)	
Setting range 30÷220 bar (yellow spring)		Setting range 60÷350 bar (red spring)	
Taratura standard (Q=5 l/1')	Incr. press. - bar giro/vite	Taratura standard (Q=5 l/1')	Incr. press. - bar giro/vite
Std. bar setting (Q=5 l/1')	Pressure rise - turn of screw	Std. bar setting (Q=5 l/1')	Pressure rise - turn of screw
210 bar	(138)	350 bar	(142)

Rapporto di pilotaggio
Pilot ratios

O 4.25 : 1
D 8 : 1

Regolazione
Adjustment

X Grano - Dowel
Z Taratura fissa - Fixed setting
H Piombata - Sealed