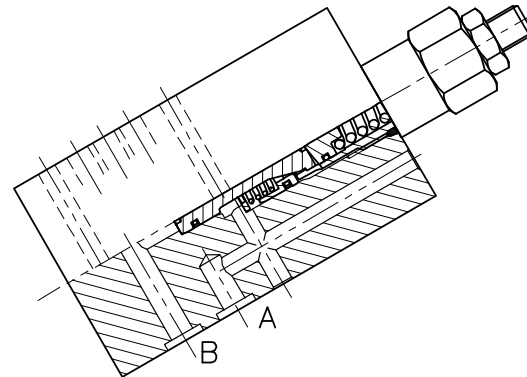
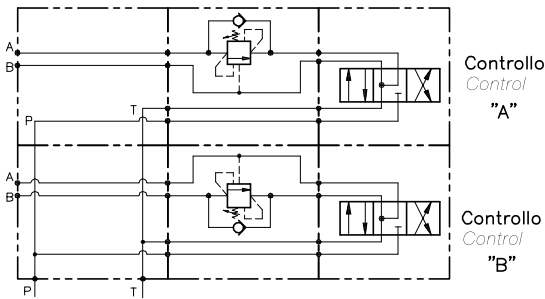


# OWC-SE-L6-...



## CARATTERISTICHE

Luce nominale	
Portata min/max	<b>DN 6</b>
Pressione max. di picco	<b>1/50 l/min - 0.26/12.5 GPM</b>
Pressione max. di taratura	<b>350 bar - 5075 PSI</b>
Rapporto di pilotaggio standard	<b>350 bar - 5075 PSI</b>
Temperatura ambiente	<b>4.25 : 1</b>
Temperatura olio	<b>-30°C + 50°C</b>
Filtraggio consigliato	<b>-30°C + 80°C</b>
Peso	<b>30 micron</b>
Peso	

## PERFORMANCE

Rated size
Min/max flow-rate
Max peak pressure
Max setting pressure
Standard pilot ratio
Room temperature
Oil temperature
Recommended filtration
Weight
Weight

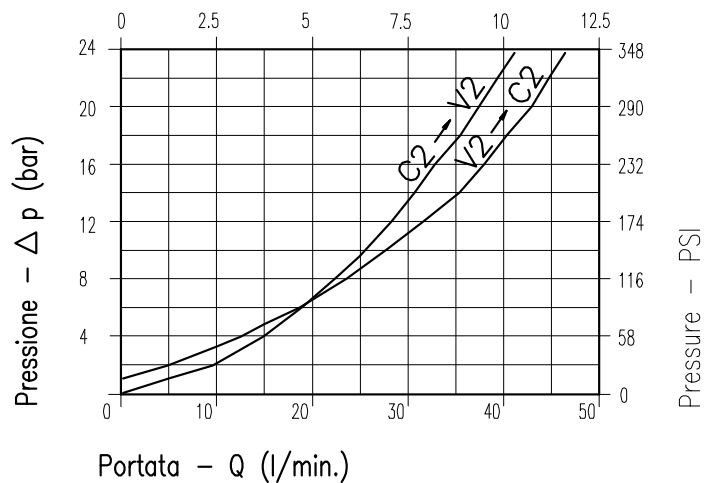
### NOTE:

La taratura deve essere **1.3** volte maggiore della pressione indotta dal carico.

Valve should be set at **1.3** times load induced pressure.

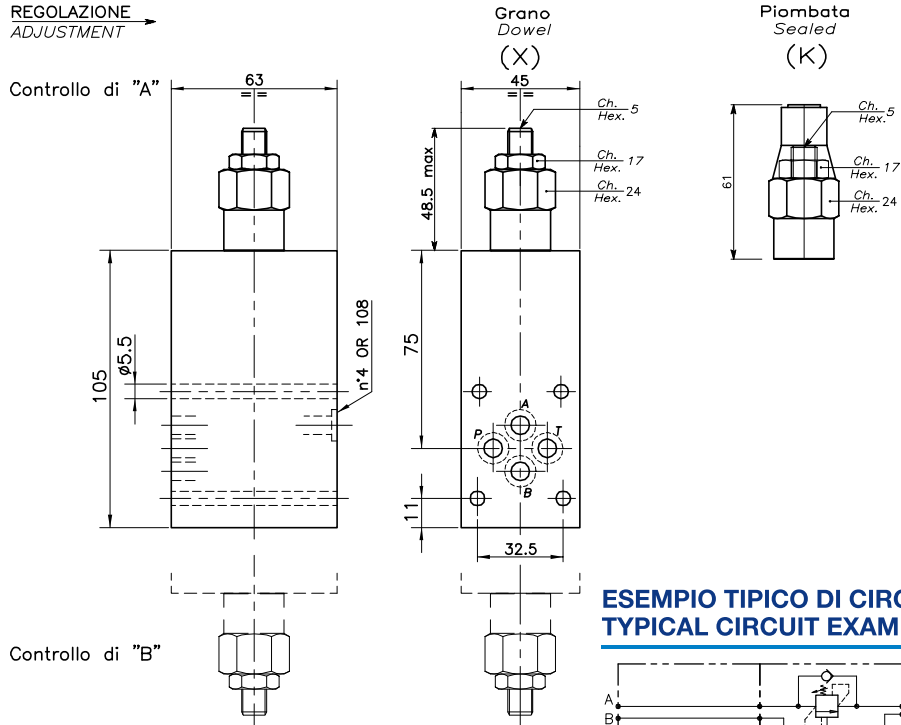
### ESEMPIO/EXAMPLE:

Pressione di lavoro max:  
Max working pressure:  
**350 bar / 1.3 = 270 bar**

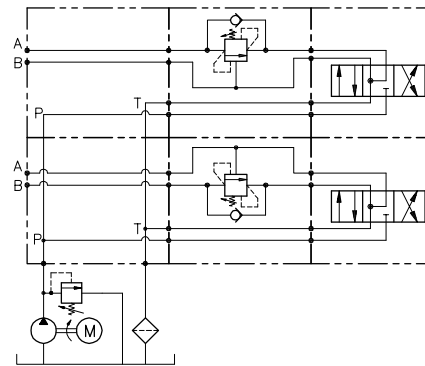


Viscosità olio 46 cSt a 50°C  
Oil viscosity 46 cSt at 50°C

**VALVOLA BILANCIAMENTO, BLOCCO E CONTROLLO DISCESA A SEMPLICE EFFETTO CON MONTAGGIO CETOP  
SINGLE COUNTERBALANCE WITH SANDWICH INSTALLATION (CETOP)**



**ESEMPIO TIPICO DI CIRCUITO  
TYPICAL CIRCUIT EXAMPLE**



**DIMENSIONI  
DIMENSIONS**

Campo taratura Setting range		Tipo flangia Flange type	Portata max Max flow-rate l/min - GPM	Controllo Control
229	228	CETOP 03	50-12.5	A
231	230	CETOP 03	50-12.5	B

**CODICE DI ORDINAZIONE  
HOW TO ORDER**

**N01 . 229 . 0 X 0 . A**

Campo taratura / Setting range				Rapporto di pilotaggio Pilot ratios	Regolazione Adjustment	Collettore Body
229	228					
231	230					
Campo taratura 30÷220 bar (molla colore verde) Setting range 30÷220 bar (green spring)		Campo taratura 60÷350 bar (molla colore giallo) Setting range 60÷350 bar (yellow spring)				
Taratura standard (Q=5 l/1')	Incr. press. - bar giro/vite	Taratura standard (Q=5 l/1')	Incr. press. - bar giro/vite			
Std. bar setting (Q=5 l/1')	Pressure rise - turn of screw	Std. bar setting (Q=5 l/1')	Pressure rise - turn of screw			
<b>180 bar</b>	<b>(50)</b>	<b>250 bar</b>	<b>(90)</b>			