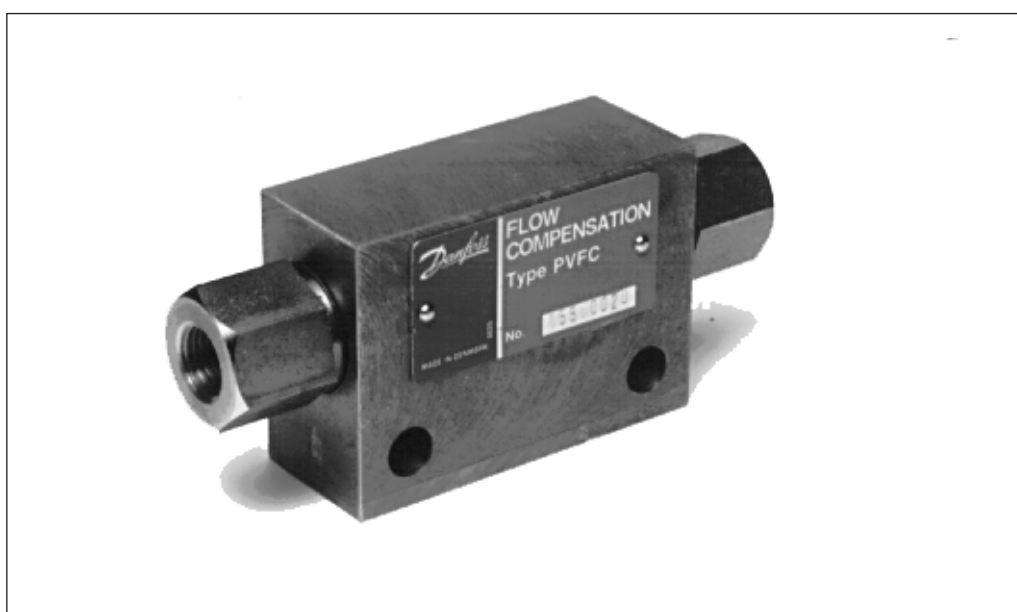


## LS Compensating Valve PVFC

DKMH.PN.500.P2.02 replaces HN.50.P1.02



### Introduction

This Tech Note introduces LS compensating valve PVFC. PVFC is an important step towards the elimination of typical regulation problems that arise when, for example, PVG is used with LS-pumps that

- lead an oil flow into the LS-line
- are fitted with a high leakage LS-control

In the first case PVFC is used as an LS-controlled pressure relief valve. In the second case it is used as an LS-controlled pressure regulator.

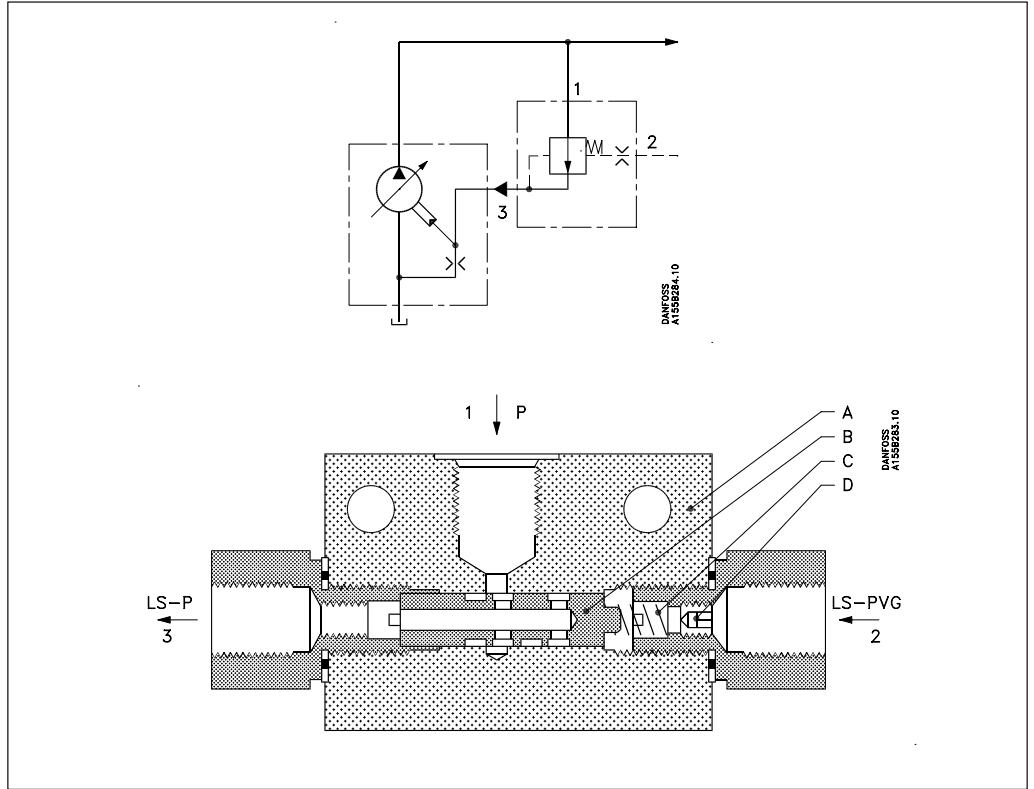
PVFC must only be sold together with other hydraulic components from Danfoss.

### Code number and weight

Code number	weight (kg)
158H8055	0,8



**PVFC as LS-controlled pressure regulator (standard)**



LS-PVG: Connection to LS-port, PVG  
 LS-P : Connection to LS-port, pump  
 Tallene 1, 2 og 3 are stamped into the valve housing

A: Housing  
 B: Spool  
 C: Spring (Spring pressure:1 bar (14.5 lbf/in<sup>2</sup>))  
 D: Orifice

**Application**

Some LS-pumps have LS-control with high leakage or a defined "bleed-off". The oil flow from the LS-line to tank often causes too low an LS-pressure in relation to the load pressure.

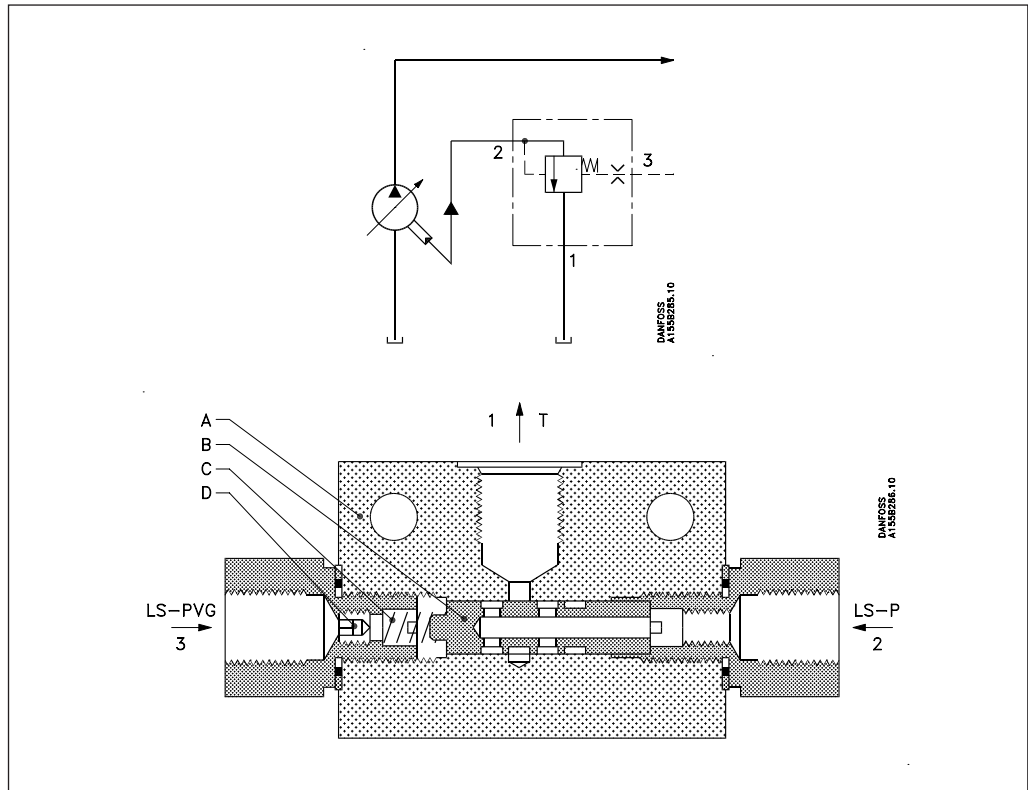
When a standard PVFC is built into the LS-line between proportional valve and pump, an oil flow equivalent to the leakage is led into the LS-line.

**Function**

When the LS-pressure in the LS-P line is less than the LS-pressure in the LS-PVG line + the spring pressure, the spool in PVFC is displaced so that oil flows from the pump into the LS-P line.

The spool cuts off the oil flow again when the pressure in the LS-P line becomes higher than the pressure in the LS-PVG line + the spring pressure. Thus the spool regulates the oil flow so that the pilot pressure for the LS-control always matches the load pressure.

**PVFC as LS-controlled pressure relief valve (converted)**



LS-PVG: Connection to LS-port, PVG  
 LS-P : Connection to LS-port, pump  
 Tallene 1, 2 og 3 are stamed into the valve housing

A: Housing  
 B: Spool  
 C: Spring (Spring pressure: 1 bar (14.5 lbf/in<sup>2</sup>)).

**Application**

Other LS-pumps conduct an oil flow into the LS-line via the LS-control. The oil flow in the LS-line often causes too high an LS-pressure in relation to the load pressure.

When a converted PVFC is built into the LS-line between pump and proportional valve, an oil flow equivalent to the flow from the pump into the LS-line is led from the LS-line to tank.

**Function**

When the pressure in the LS-P line becomes higher than the pressure in the LS-PVG line + the spring pressure, the spool is displaced so that oil flows from the LS-P line to tank.

The spool cuts off the oil flow again when the pressure in the LS-P line becomes less than the pressure in the LS-PVG line + the spring pressure. In this way the spool regulates the oil flow so that the pilot pressure for the LS-control always matches the load pressure.

Danfoss can accept no responsibility for possible errors in catalogues, brochures and other printed material. Danfoss reserves the right to alter its products without notice. This also applies to products already on order provided that such alterations can be made without subsequential changes being necessary in specifications already agreed. All trademarks in this material are property of the respective companies. Danfoss and the Danfoss logotype are trademarks of Danfoss A/S. All rights reserved.