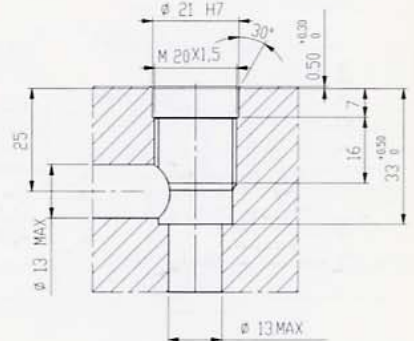
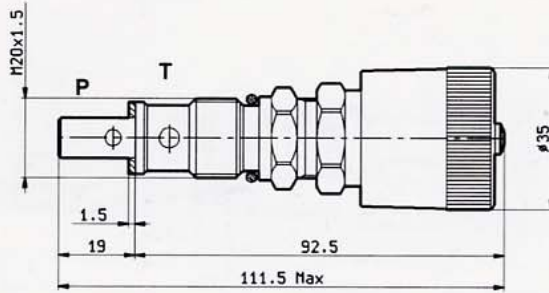
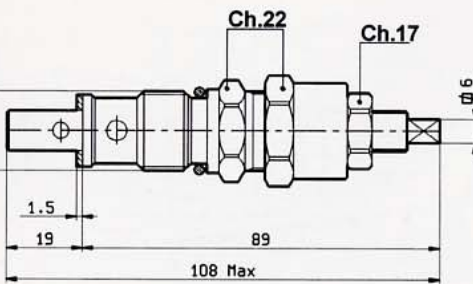


Codice Code	Q max. lt/min.	P max. Bar	Attacchi Port size	CAVITA CAVITY
LPC 6	40	350	M20x1,5	n°11

Versione **V**
Version



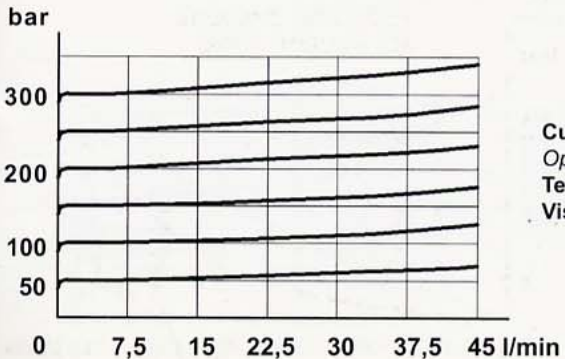
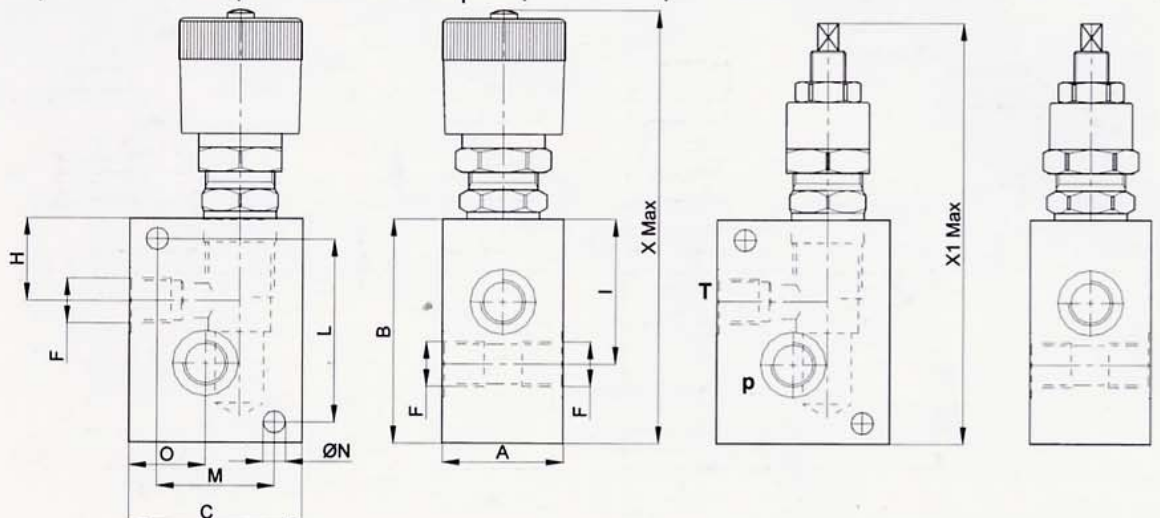
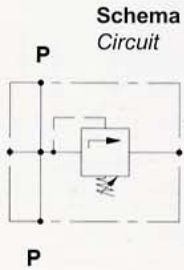
Codice ordinazione Order code	Peso Weight Kg.	Codice ordinazione Order code Versione V Version	Peso Weight Kg.	Campo di taratura Pressure range Bar	Coppia di serraggio Installation torque Nm
LPC6/50 LPC6/100 LPC6/210 LPC6/350	0,156	LPC6V/50 LPC6V/100 LPC6V/210 LPC6V/350	0,206	5 > 50 30 > 100 50 > 210 100 > 350	46 > 51

Rondella rame, fornita su richiesta.
Copper washer, on request

VALVOLA IN LINEA - LINE MOUNTED VERSION

Codice Code	A m/m	C m/m	B m/m	Attacchi Port size ØF BSPP	H m/m	I m/m	L m/m	M m/m	O m/m	ØN m/m	X m/m	X1 m/m	Peso Weight Kg
LPC6.../C14	35	50	65	1/4"	24	48	53	34	22	6,5	126,5	123	0,407
LPC6.../C38	35	50	65	3/8"	24	48	53	34	20	6,5	126,5	123	0,400
LPC6.../C12	35	50	65	1/2"	24	48	53	34	18	6,5	126,5	123	0,381

LPC6V.../C..
Codice di ordinazione per versione a volante
Ordering code for version with wheel



Curve di apertura
Opening curves
Temp.olio 30°C-
Viscosità 33 Cst/40°C

