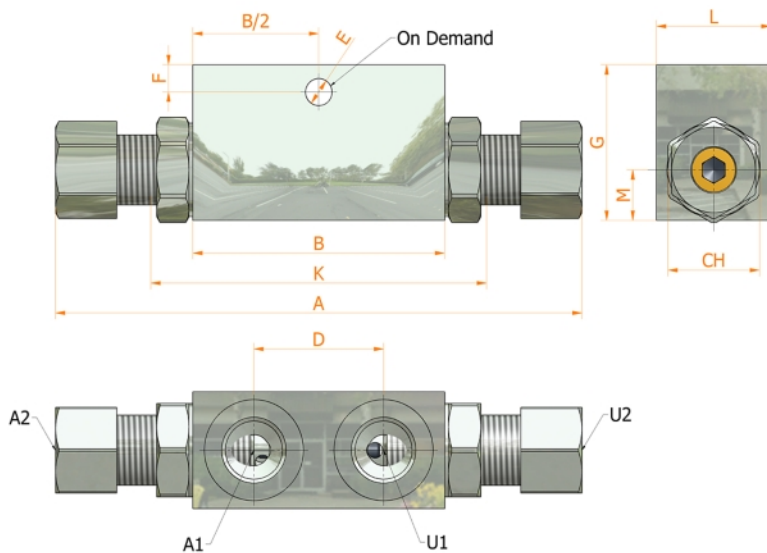
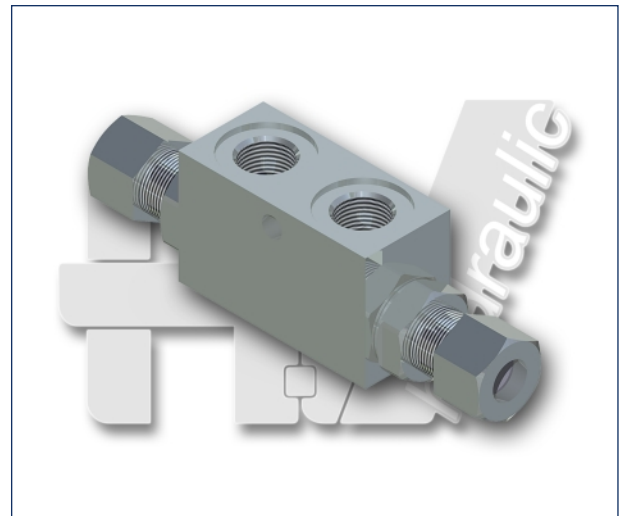
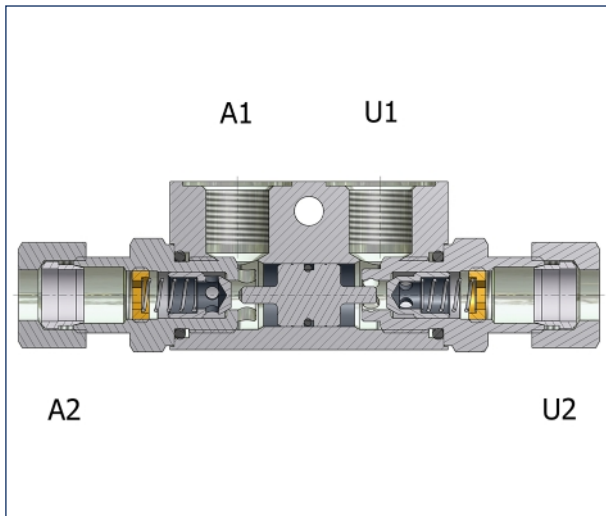
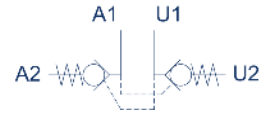




# VBDE - DIN 2353

inline double acting  
pilot operated  
check valve



**Specifications:**

- Zinc plated steel body
- Heat treated components

**Upon demand:**

- Spring 0,5 bar
- Spring 8 bar



# VBDE - DIN 2353

inline double acting  
pilot operated  
check valve



**SPECIFICATIONS**

DIMENSIONS	000	005	010	015	020	025	030		
MAX. PRESSURE BAR	350	350	350	350	350	300	300		
RATED FLOW lt/min	20	20	20	20	50	50	80		
PILOT RATIO	1: 4,5	1: 4,5	1: 4,5	1: 4,5	1: 4,5	1: 4,5	1: 4		
OPENING PRESSURE BAR	4	4	4	4	4	4	4		

**WEIGHT AND DIMENSIONS**

DIMENSIONS	A	B	A1-U1 A2-U2 GAS	A1-U1 A2-U2 NPT	A1-U1 A2-U2 SAE	D	E	F	G	L	M	CH	K	WEIGHT KG
000	138	66	1/4 10	1/4 10	-	34	7,0	7,0	40	30	13	24	88	0,66
005	138	66	3/8 10	3/8 10	-	34	7,0	7,0	40	30	13	24	88	0,65
010	138	66	1/4 12	1/4 12	-	34	7,0	7,0	40	30	13	24	88	0,68
015	138	66	3/8 12	3/8 12	3/16 - 18 1/2	34	7,0	7,0	40	30	13	24	88	0,67
020	140	76	3/8 15	3/8 15	3/4 - 16 5/8	40	8,5	15,0	50	30	16	27	106	0,98
025	140	76	1/2 15	1/2 15	7/8 - 14 5/8	40	8,5	15,0	50	30	16	27	106	0,92
030	180	77	1/2 18	1/2 18	7/8 - 14 3/4	40	8,5	15,0	60	40	20	30	133	1,68

**ITEM CODE**

