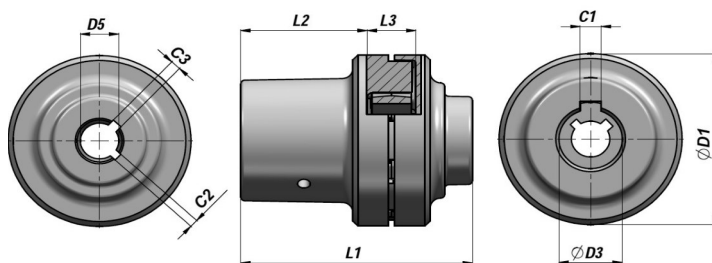


GIUNTO ELASTICO  
FLEXIBLE COUPLING

NEW!

HE



Codice Code	Tipo Type	ØD1	L1	Motore Elettrico - Electric Motor				L3	Pompa - Pump				kg
				kW	ØD3	C1	L2		GR.	D5	C2	C3	
BHN10200002	HE02-AKG03FS100Z	44.0	60	0.25 - 0.37	14	5	28	16	GR.1	1:8	2,4	-	0,12
BHN10200006	HE06-AKG04FS100Z	44.0	80	0.55 - 0.75	19	6	48	16	GR.1	1:8	2,4	-	0,18
BHN10200042	HE46-AKG04FS200Z	70.0	87	0.55 - 0.75	19	6	48	18	GR.2-2T	1:8	3,2	4,0	0,44
BHN10200037	HE41-AKG05FS100Z	44.0	80	1.10 - 1.50	24	8	48	16	GR.1	1:8	2,4	-	0,16
BHN10200012	HE14-AKG05FS200Z	70.0	87	1.10 - 1.50	24	8	48	18	GR.2-2T	1:8	3,2	4,0	0,40
BHN10200014	HE16-AKG07FS100Z	70.0	94	2.20 - 3 - 4	28	8	55	18	GR.1	1:8	2,4	-	0,44
BHN10200017	HE19-AKG07FS200Z	70.0	94	2.20 - 3 - 4	28	8	55	18	GR.2-2T	1:8	3,2	4,0	0,43
BHN10200084	HE48-AKG07FS300Z	70.0	114	2.20 - 3 - 4	28	8	55	18	GR.3	1:8	2,4	-	0,52
BHN10200024	HE28-AKG11FS200Z	85.0	136	5.50 - 7.50	38	10	77	22	GR.2-2T	1:8	3,2	4,0	0,99
BHN10200026	HE30-AKG11FS300Z	85.0	136	5.50 - 7.50	38	10	77	22	GR.3	1:8	4,0	-	0,99
BHN10200028	HE32-AKG12FS200Z	109.5	167	11 - 15	42	12	109	26	GR.2-2T	1:8	3,2	4,0	2,02
BHN10200030	HE34-AKG12FS300Z	109.5	167	11 - 15	42	12	109	26	GR.3	1:8	4,0	-	2,00
BHN10200033	HE37-AKG13FS300Z	109.5	167	18.50 - 22	48	14	109	26	GR.3	1:8	4,0	-	2,98
BHN10200031	HE35-AKG12FS350Z	109.5	167	11 - 15	42	12	109	26	GR.3.5	1:8	4,8	-	2,49

MATERIALE : ALLUMINIO  
MATERIAL : ALUMINIUM

