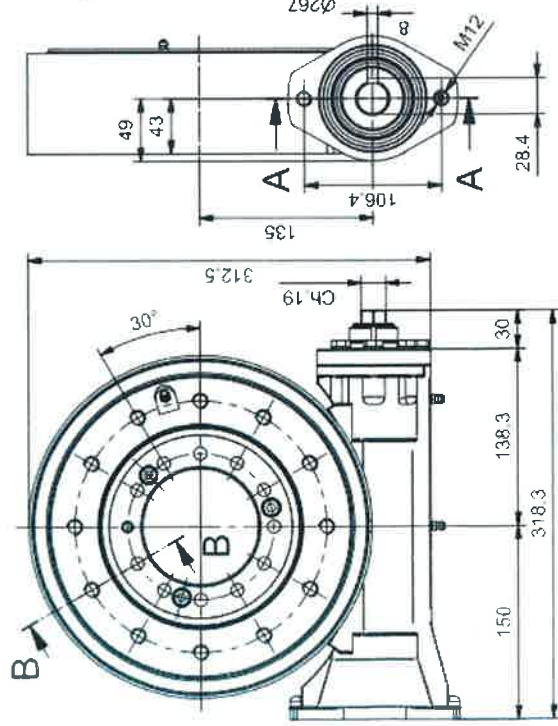
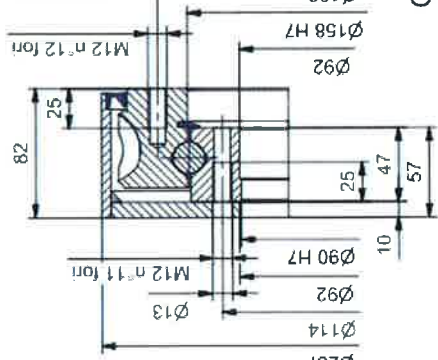


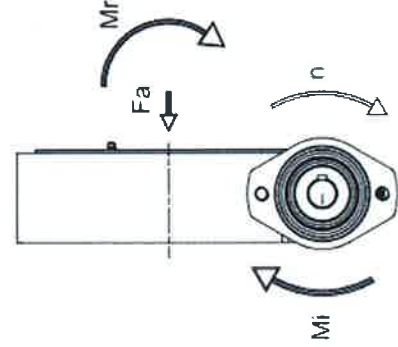
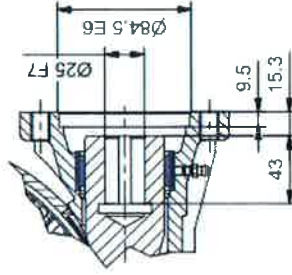
DIMENSIONI D'INGOMBRO - OVERALL DIMENSIONS



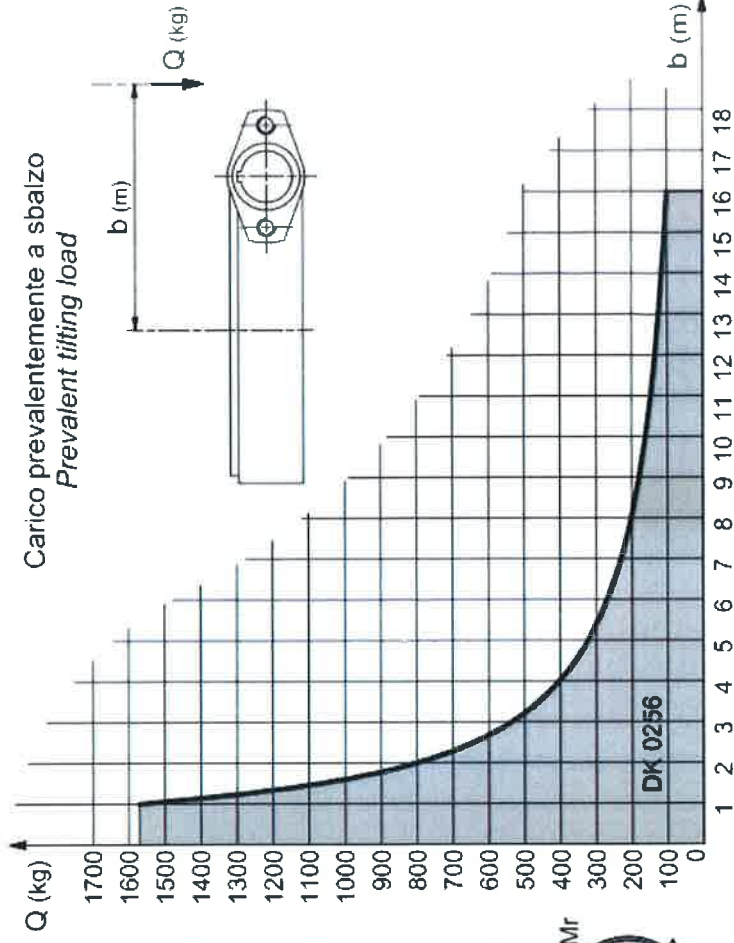
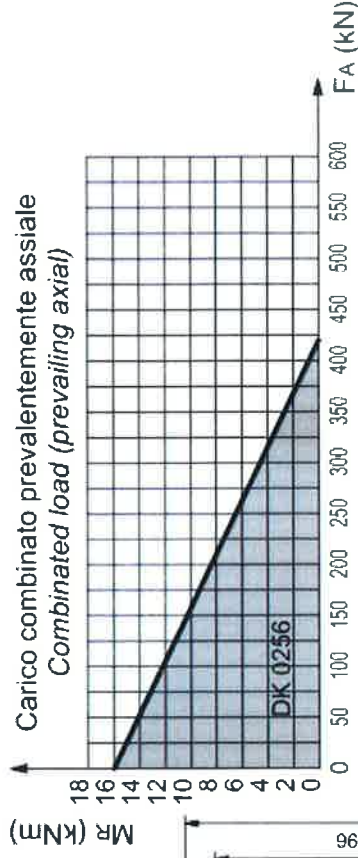
Sez. B-B



Sez. A-A



DIAGRAMMI DEI CARICHI - LOADS DIAGRAMS



DATI TECNICI - TECHNICAL DATA

Rapporto di riduzione Gear ratio	$r = 1 : 46$		
Giri max. ingresso Max. input rpm	$n = 200$ rpm		
Coppia max. ingresso Max. input torque		serv. continuo e/o giri max. continuous / max rpm di picco peak	$M_i = 105$ Nm $M_p = 212$ Nm
Coppia max. uscita Max. output torque (rendimento - efficiency 70%)		serv. continuo continuous di picco peak	$M_u = 3.060$ Nm $M_s = 3.380$ Nm $M_p = 3.060$ Nm $M_P = 6.800$ Nm
Coppia max. uscita in stallo (C.frenante) Max stall output torque (Braking torque)			$M_r = 3.060$ Nm $M_l = 8.150$ Nm

Non è garantita la irreversibilità del moto
Total nonreversing is not guaranteed

* Limite vite senza fine
Worm gear load capacity
* Limite con fissaggio n°11 bulloni: 10.9
Fixing bolt load capacity (quality 10.9)

Peso
Weight

kg 29.2



SCHEDA TECNICA - TECHNICAL SHEET
GRUPPO RALLA DI ROTAZIONE - SLEWING RING
DK0256 - CORPO IN ACCIAIO - ANELLO DI TENUTA
DK0256 - STEEL CASE - SHAFT SEAL

COD. GRBDK02560 REV. 00