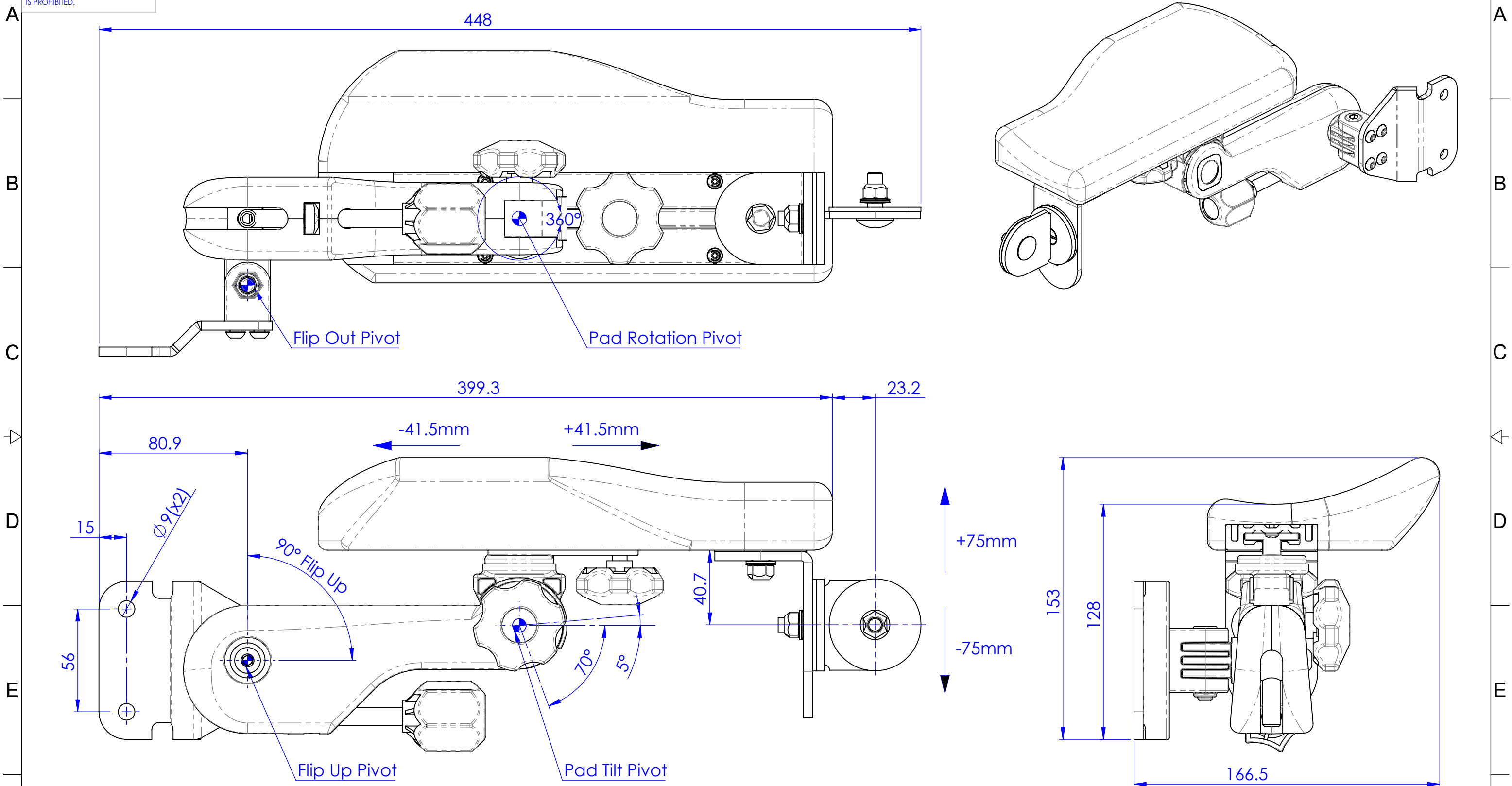


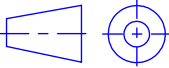

PROPRIETARY AND CONFIDENTIAL
THE INFORMATION CONTAINED IN
THIS DRAWING IS THE SOLE PROPERTY
OF FRAMECO AB.
ANY REPRODUCTION IN PART OR
AS A WHOLE WITHOUT THE WRITTEN
PERMISSION OF FRAMECO AB
IS PROHIBITED.

Rev. no	Revision note	Signature	Date	Approved
A	Created New.	KK	2023-08-11	VN

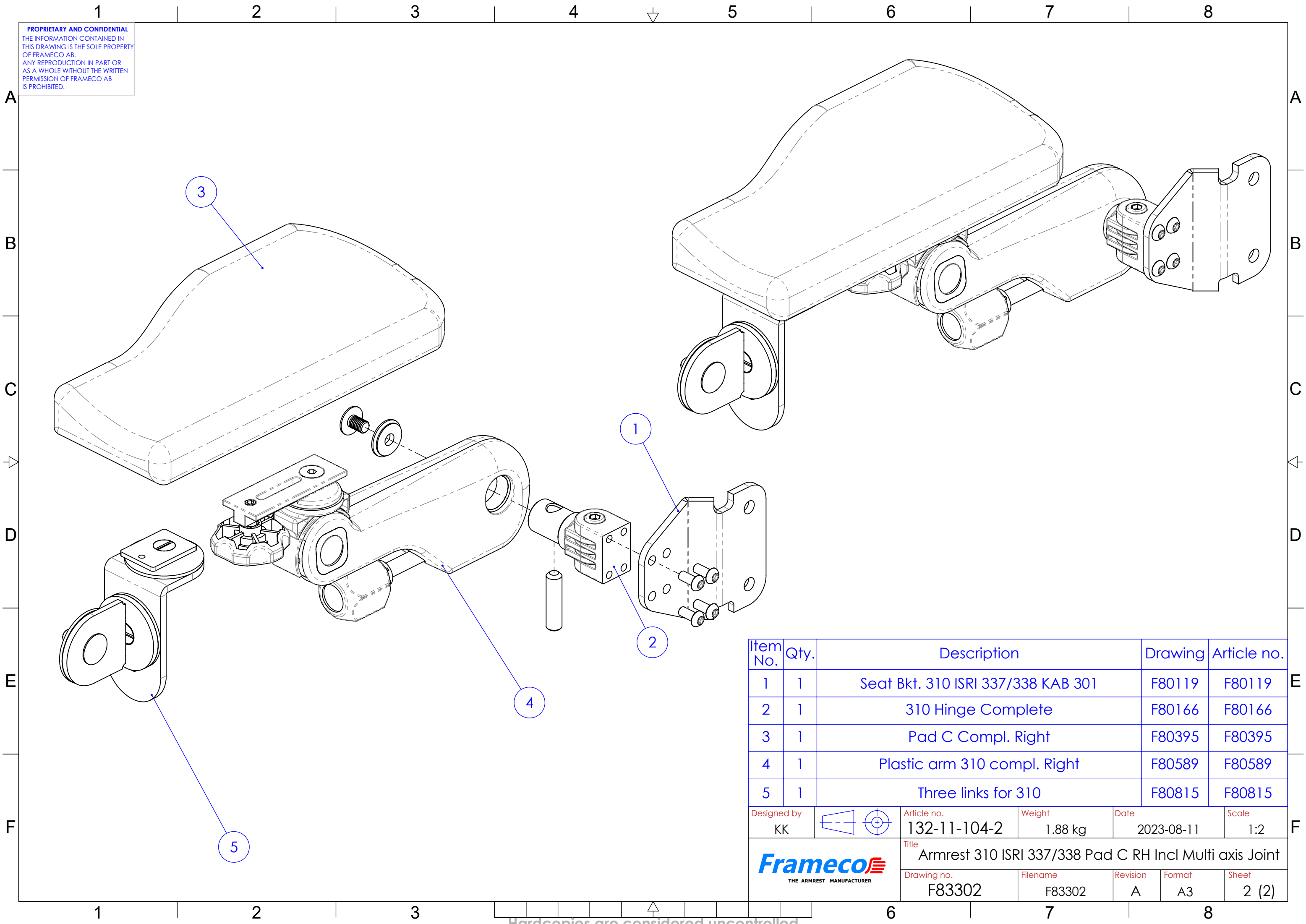


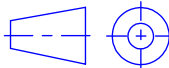
Adjustments in Arm rest
Flip Up: 90°
Pad Fore/Aft: +/- 41.5mm
Pad Tilt: +5° & -70°
Pad Rotation: 360°
Pad Up/Down: +75mm & -75mm
Flip Out: 90°

All dimensions are for
reference only, unless
specified with tolerances

Designed by KK		Article no. 132-11-104-2	Weight 1.88 kg	Date 2023-08-11	Scale 1:2
 THE ARMREST MANUFACTURER		Title Armrest 310 ISRI 337/338 Pad C RH Incl Multi axis Joint			
		Drawing no. F83302	Filename F83302	Revision A	Format A3
				Sheet 1 (2)	

PROPRIETARY AND CONFIDENTIAL
THE INFORMATION CONTAINED IN
THIS DRAWING IS THE SOLE PROPERTY
OF FRAMECO AB.
ANY REPRODUCTION IN PART OR
AS A WHOLE WITHOUT THE WRITTEN
PERMISSION OF FRAMECO AB
IS PROHIBITED.



Item No.	Qty.	Description			Drawing	Article no.	
1	1	Seat Bkt. 310 ISRI 337/338 KAB 301			F80119	F80119	
2	1	310 Hinge Complete			F80166	F80166	
3	1	Pad C Compl. Right			F80395	F80395	
4	1	Plastic arm 310 compl. Right			F80589	F80589	
5	1	Three links for 310			F80815	F80815	
Designed by KK			Article no. 132-11-104-2		Weight 1.88 kg	Date 2023-08-11	Scale 1:2
			Title Armrest 310 ISRI 337/338 Pad C RH Incl Multi axis Joint				
			Drawing no. F83302		Filename F83302	Revision A	Format A3