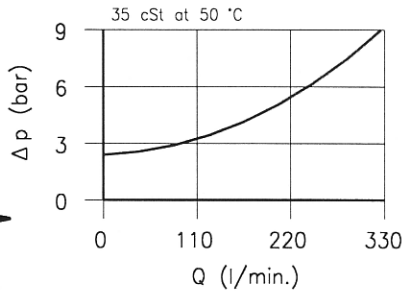
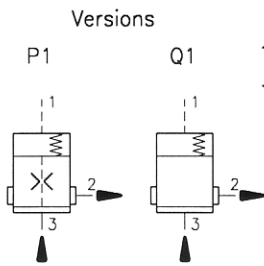


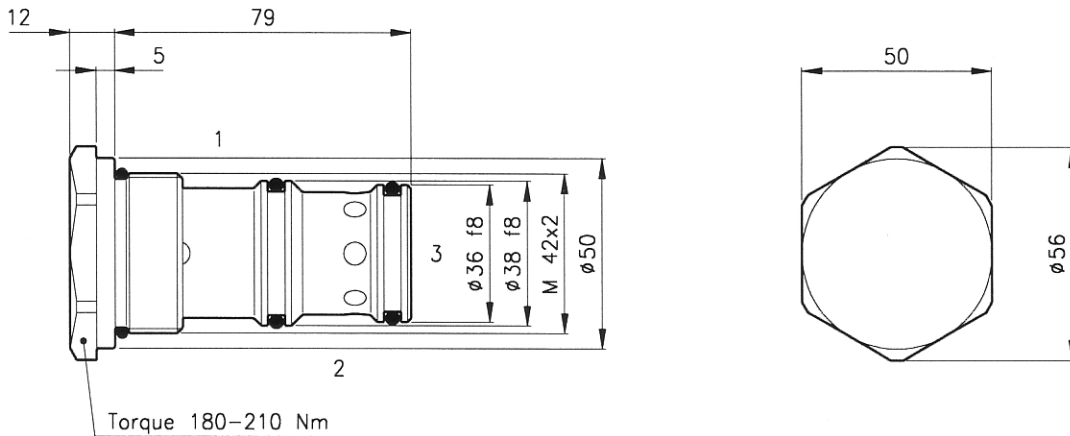
Technical features

Logic valves ELP 70/P1 series, with internal orifice, are used for pressure control, as sequence or by-pass valves. The Q1 version without internal orifice, if combined with a needle valve, is a flow compensator which unload the excess flow in tank.



| | |
|---|-----------|
| Cavity (For dimensions see catalogue 17.000) | S 70/3 |
| Nominal flow (l/min.) | 320 |
| Max. pressure (bar) | 350 |
| Ratio between areas A1/A3 | 1:1 |
| Cracking pressure (bar) | 2.5 |
| Fluid viscosity range (cSt) | 2.8 - 380 |
| Fluid temperature range (°C) | -20 +80 |
| Orifice diameter (P1 version) (mm) | 0.75 |
| Mass (kg) | 0.660 |
| Hydraulic fluid; mineral oil HM and HV | ISO 6074 |
| Recommended filtration; 19/15 ISO 4466 (25 μ absolutes) | |
| Standard seals in Polyurethane and Buna N | |

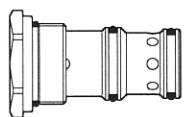
Dimensions



Ordering informations

ELP 70/P1

ELP 70 = Valve type



Version

P1 = pressure control

Q1 = flow compensator

Codes:

| | |
|--------------------|------------|
| ELP 70/P1 | 76 011 100 |
| ELP 70/Q1 | 76 011 101 |
| External seals kit | 90 620 120 |

ELP 70 valves can be assembled on standard bodies 70-C3 series; for dimensions see catalogue 16.010