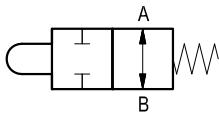
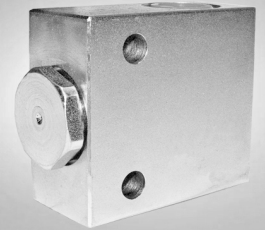


RE 18310-21/04.10 1/2
Replaces: RE 00171/02.07

End of stroke normally open

A-VMS-10-NA

FC 10 NA

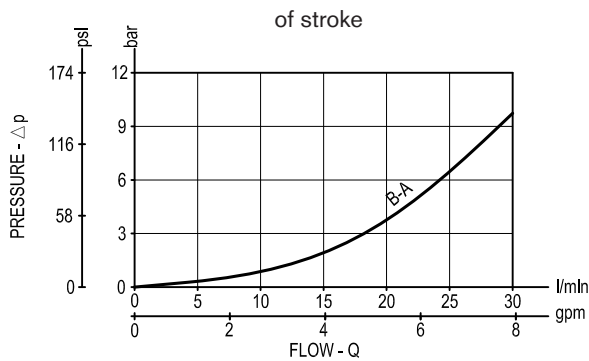


Description

This pushbutton valve is used to block oil passage in a hydraulic circuit (normally open valve); flow is allowed in both directions and the valve closes by pushing mechanically the slider.

Connect independently A or B to the distributor and to the circuit. When slider is operating flow is blocked in both direction.

Performance



Technical data

Hydraulic

Max. operating pressure	bar (psi)	250 (3600)
Max. flow	l/min (gpm)	30 (8)

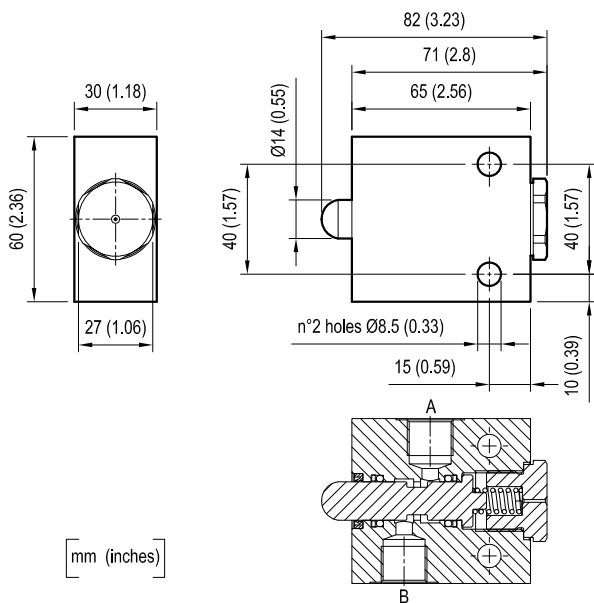
Relief setting: at least 1.3 times the highest expected load.

General

Manifold material		Steel
Weight	kg (lbs)	0.81 (1.8)
Fluid temperature range	°C (°F)	between -30 (-22) and +100 (212)
Other technical data		see data sheet RE 18350-50

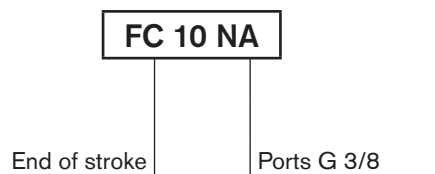
Note: for applications outside these parameters, please consult us.

Dimensions



Spring weight - N	
End stroke	Of stroke
80	215

Ordering code



Type	Material number
FC 10 NA	R932500193

Type	Material number