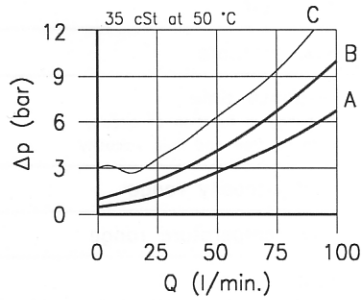
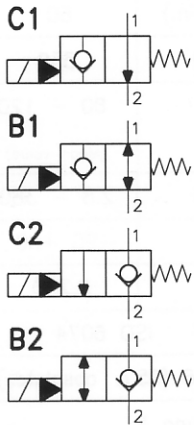


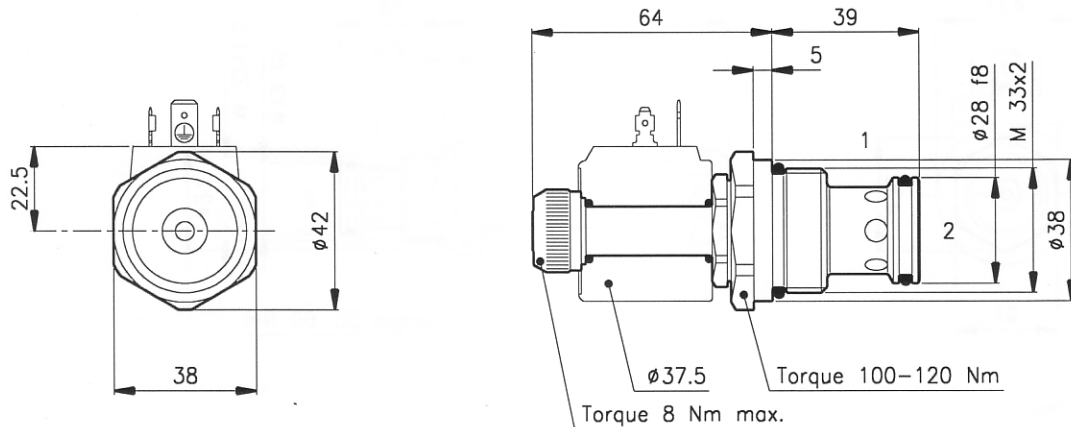
Technical features



	22C1	22B1	22C2	22B2
1 → 2 De-en.	curve A	curve A	not allowed	not allowed
2 → 1 De-en.	not allowed	curve A	curve B	curve B
1 → 2 Energ.	not allowed	not allowed	curve A	curve A
2 → 1 Energ.	curve C	curve C	not allowed	curve A

Cavity	(For dimensions see catalogue 17.000)	S 50/2
Max. flow	(l/min.)	90
Max. pressure	(bar)	210
Response time	(ms)	80 - 120
It change in function of circuit, pressure, flow and fluid viscosity. (Mean value)		
Fluid viscosity range	(cSt)	2.8 - 380
Fluid temperature range	(°C)	-20 +80
Mass	(kg)	0.400
Hydraulic fluid; mineral oil HM and HV ISO 6074		
Recommended filtration; 19/15 ISO 4466 (25 μ absolutes)		
Standard seals in Polyurethane and Buna N		

Dimensions

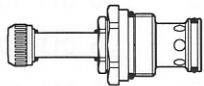


08

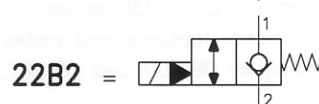
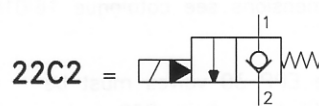
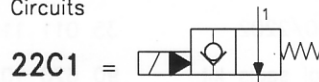
Ordering informations

ECP 50/22C1

ECP 50/22.. = Valve type



Circuits



Codes:

ECP 50/22C1	55 011 105
ECP 50/22B1	55 011 104
ECP 50/22C2	55 011 107
ECP 50/22B2	55 011 106
External seals kit	90 620 106

ECP 50/22.. valves can be assembled on standard bodies 50-L0 series; for dimensions see catalogue 16.010

On the ECP 50 valves must be assembled the Coils B20 series; for dimensions, features and codes see catalogues 09.900 and 09.901.