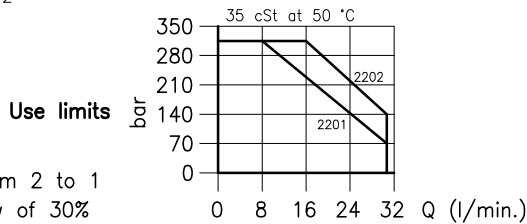
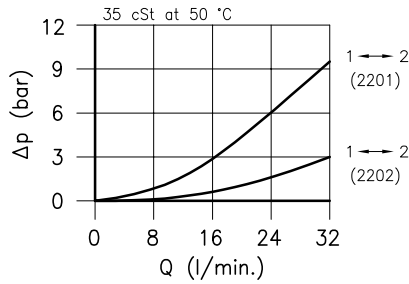
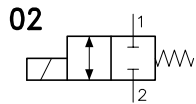
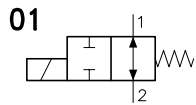
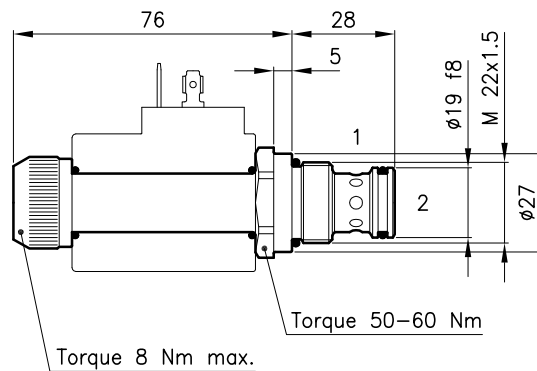
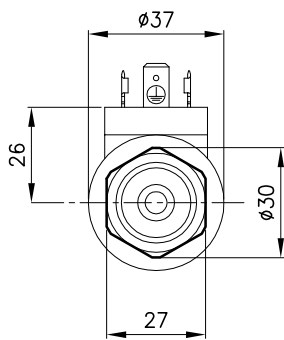


Technical features



| | | |
|---|---------------------------------------|-------------------------|
| Cavity | (For dimensions see catalogue 17.000) | S 30/2 |
| Max. flow | (With flow from 1 to 2) (l/min.) | 30 |
| Max. pressure | (bar) | 315 |
| Max. leakage | (cm ³ /min.) | 25 |
| Response time | (ms) | 30 - 60 (Mean value) |
| It change in function of circuit, pressure, flow and fluid viscosity. | | |
| Fluid viscosity range | (cSt) | 2.8 - 380 |
| Fluid temperature range | (°C) | -20 +80 |
| Mass | (kg) | 0.210 |
| Hydraulic fluid; mineral oil HM and HV ISO 6074 | | |
| Recommended filtration; 19/15 ISO 4466 (25 μ absolutes) | | |
| Standard seals in Polyurethane and Buna N | | |

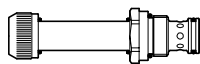
Dimensions



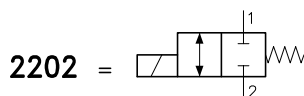
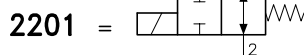
Ordering informations

ETD 30/2201

ETD 30/22.. = Valve type



Circuits



Codes:

| | |
|--------------------|------------|
| ETD 30/2201 | 35 011 120 |
| ETD 30/2202 | 35 011 130 |
| External seals kit | 90 620 103 |

ETD 30/22.. valves can be assembled on standard bodies 30-LO series; for dimensions see catalogue 16.010

On the ETD 30 valves must be assembled the Coils B30 series; for dimensions, features and codes see catalogues 09.900 and 09.901.