



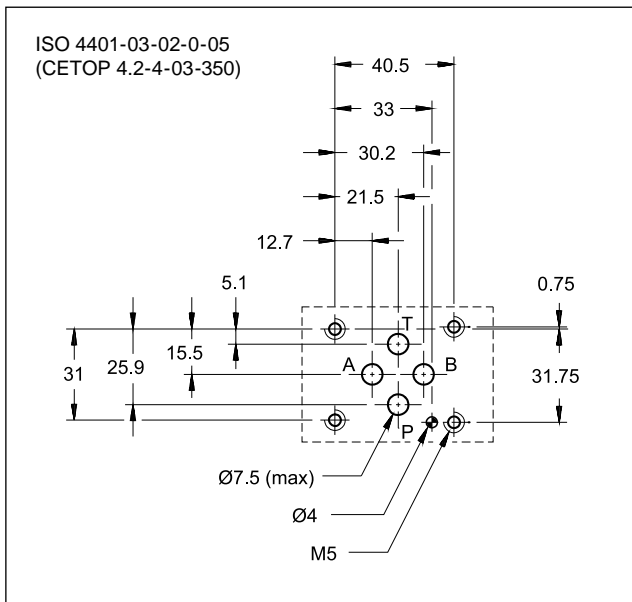
DSE3

PROPORTIONAL DIRECTIONAL VALVE SERIES 11

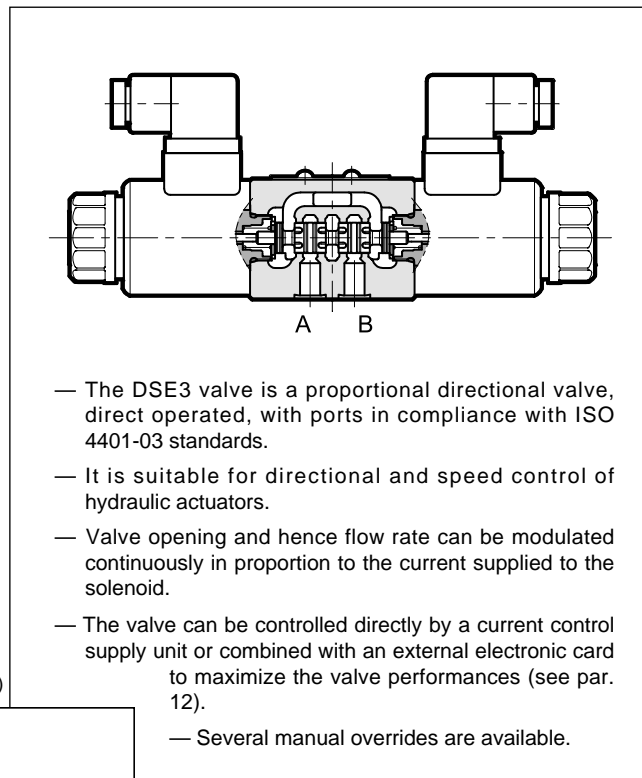
SUBPLATE MOUNTING ISO 4401-03

p max 350 bar
Q max 40 l/min

MOUNTING SURFACE



OPERATING PRINCIPLE

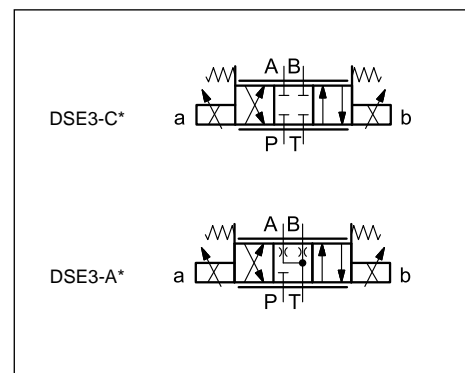


PERFORMANCES

(obtained with mineral oil with viscosity of 36 cSt at 50°C and electronic control card)

Max operating pressure: P - A - B ports T port	bar	350 210
Maximum flow with Δp 10 bar P-T	l/min	1 - 4 - 8 - 16 - 26
Step response		see par. 5
Hysteresis (with PWM 200 Hz)	% Q_{max}	< 6%
Repeatability	% Q_{max}	< $\pm 1,5\%$
Electrical characteristics		see par. 4
Ambient temperature range	°C	-20 / +60
Fluid temperature range	°C	-20 / +80
Fluid viscosity range	cSt	10 ÷ 400
Fluid contamination degree	According to ISO 4406:1999 class 18/16/13	
Recommended viscosity	cSt	25
Mass: single solenoid valve double solenoid valve	kg	1.5 2.0

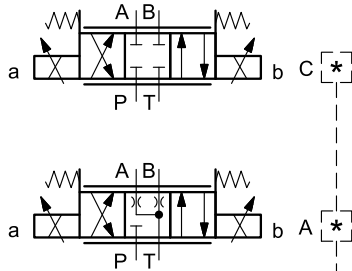
HYDRAULIC SYMBOLS (typical)



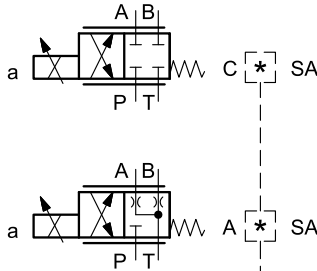
CONFIGURATIONS

Valve configuration depends on the combination of the following elements:
number of proportional solenoids, spool type, nominal flow rate.

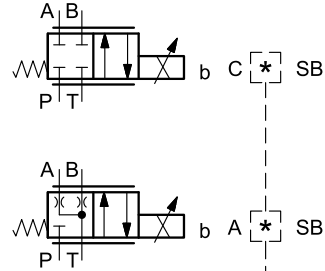
2 solenoids configuration:
3 positions with spring centreing



“SA” configuration: 1 solenoid on side A.
2 positions (central + external) with
return spring



“SB” configuration: 1 solenoid on side B.
2 positions (central + external) with
return spring



*	Nominal flow with Δp 10 bar P→T
01	1 l/min
04	4 l/min
08	8 l/min
16	16 l/min
16/08	16 (P→A) / 08 (B→T) l/min
26	26 l/min
26/13	26 (P→A) / 13 (B→T) l/min