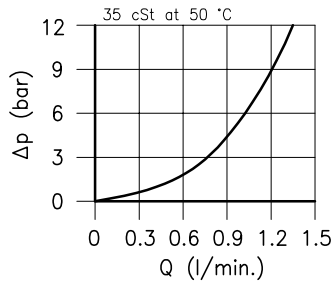
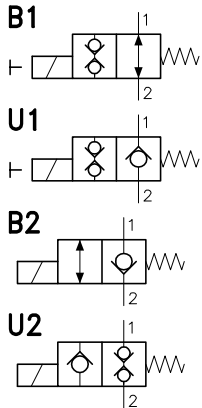


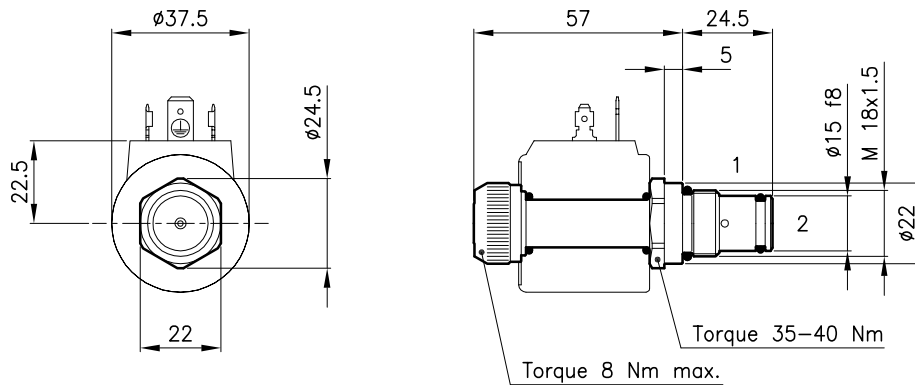
**Technical features**



In B2 version the flow from 2 to 1 needs a pressure about 180 bar.

Cavity (For dimensions see catalogue 17.000)	S 20/2
Max. flow (l/min.)	1.2
Max. pressure (bar)	210
Response time (ms) <small>It change in function of circuit, pressure, flow and fluid viscosity.</small>	20 - 40 <small>(Mean value)</small>
Fluid viscosity range (cSt)	2.8 - 380
Fluid temperature range (°C)	-20 +80
Mass (kg)	0.120
Hydraulic fluid; mineral oil HM and HV ISO 6074	
Recommended filtration; 19/15 ISO 4466 (25 μ absolutes)	
Standard seals in Polyurethane and Buna N	

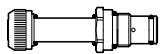
**Dimensions**



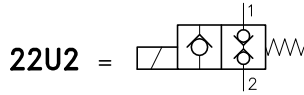
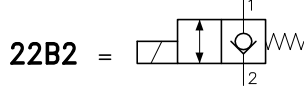
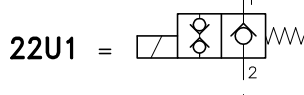
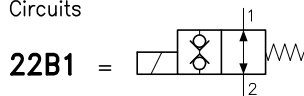
**Ordering informations**

**ECD 20/22U1-MO**

ECD 20/22.. = Valve type



Circuits



MO = Manual override (Only B1 and U1 version)  
(Omit if not request)

Codes:

ECD 20/22B1	25 011 109
ECD 20/22B1-MO	25 011 147
ECD 20/22U1	25 011 120
ECD 20/22U1-MO	25 011 146
ECD 20/22B2	25 011 104
ECD 20/22U2	25 011 105
External seals kit	90 620 100

ECD 20/22.. valves can be assembled on standard bodies 20-L0 series; for dimensions see catalogue 16.010

On the ECD 20 valves must be assembled the Coils B20 series; for dimensions, features and codes see catalogues 09.900 and 09.901.