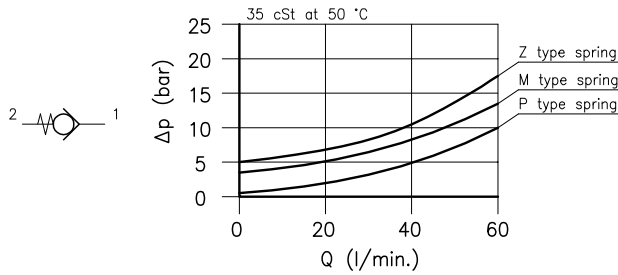
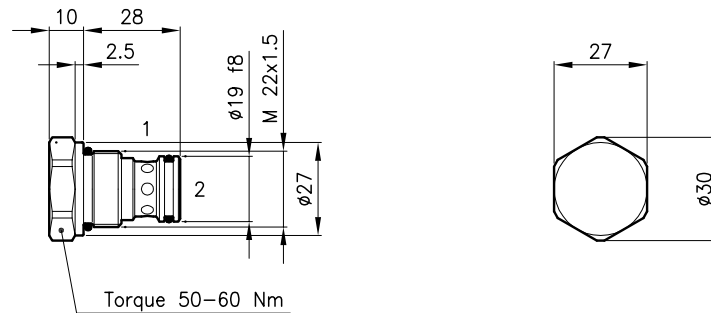


Technical features



Cavity (For dimensions see catalogue 17.000)	S 30/2
Nominal flow (l/min.)	60
Max. pressure (bar)	420
Cracking pressure (bar)	0.35-3.5-5
Fluid viscosity range (cSt)	2.8 - 380
Fluid temperature range (°C)	-20 +80
Mass (kg)	0.100
Hydraulic fluid; mineral oil HM and HV	ISO 6074
Recommended filtration; 19/15 ISO 4466 (25 μ absolutes)	
Standard seals in Polyurethane and Buna N	

Dimensions



Ordering informations

EAC 30/P

EAC 30 = Valve type



Standard springs

P = 0.35 bar

M = 3.5 bar

Z = 5 bar

Codes:

EAC 30/P 32 011 176

EAC 30/M 32 011 177

EAC 30/Z 32 011 178

External seals kit 90 620 103

EAC 30 valves can be assembled on standard bodies 30-LO series; for dimensions see catalogue 16.010