

Pos.	Bestillingsnr.	Varebeskrivelse	Antall
1	E1009005	Blokk for bakmontert kran (2010)	1
2	HY63010004	Mflinnes PA12 1/4"	1
3	HY7503 0008	Plugg BSP 3/8" m/pakking	1
4	HY7503 0006	Plugg BSP 3/8" m/pakking	1
5	FC06180	Trykkbeleg 160 l/min +20bar LPI 50/Q+N	1

Materiale: Sferoidal cast iron (GGG40)

Surface treatment:
Phosphating UNI ISO 9717

Date:	Drawn by:	Rev. no.:
13.09.2010	Anne Enggebretsen	
Our ref.:	Customer no.:	Order no.:
Jens Nytrøen		
Titel:		
Komplett blokk med trykkbeleg. ventil for bakmontert kran		
Drawing no.:		
E1009005L		
Reference:		
Comments:		

Formate: A4
Skalle: 1:2,5



EGIL ENG & CO. AS

Jernkroken 7, 0976 Oslo

Phone: +47 22 90 05 60, Fax: +47 22 16 15 55

Denne tegning tilhører Egil Eng & Co AS. Kopiering ikke tillatt.
This drawing is the property of Egil Eng & Co AS. Copying is not permitted.
Diese Zeichnung ist Eigentum der Firma Egil Eng & Co. AS.
Alle Rechte vorbehalten.
All rights reserved.
Diese Zeichnung ist Eigentum der Firma Egil Eng & Co. AS.
Nicht genehmigte Vervielfältigung sind unzulässig.

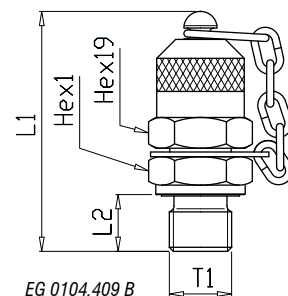
EG ... Test point with male stud

Series M16x2

Part No.	Series	T1	Fig.	Sealing Type	Seal Material	L1 mm	L2 mm	Hex1 mm	PN bar	Weight g	Cr6-free
EG 0108.409 B	M16x2	G1/8 BSPP	E	ED	NBR	46	8	17	400	56	yes
EG 0104.400 B	M16x2	G1/4 BSPP	D	CE		50	12	19	630	67	yes
EG 0104.409 B	M16x2	G1/4 BSPP	E	ED	NBR	51	12	19	630	67	yes
EG 0308.409 B	M16x2	G3/8 BSPP	E	ED	NBR	51	12	22	630	82	yes
EG 0102.400 B ¹	M16x2	G1/2 BSPP	D	CE		63	14	27	630	121	yes
EG 0102.409 B	M16x2	G1/2 BSPP	E	ED	NBR	54	14	27	630	112	yes
EG 0304.409 B ¹	M16x2	G3/4 BSPP	E	ED	NBR	65	16	32	630	167	yes
EG 0188.400 B	M16x2	R1/8 BSPT	C	CO		45	8	17	400	56	call
EG 0184.400 B	M16x2	R1/4 BSPT	C	CO		49	12	17	630	62	yes
EG 0118.400 B	M16x2	1/8-27 NPT	C	CO		48	10	17	400	58	yes
EG 0114.400 B	M16x2	1/4-18 NPT	C	CO		53	16	17	630	66	yes
EG 0318.400 B	M16x2	3/8-18 NPT	C	CO		55	17	19	400	82	yes
EG 0516.409 B	M16x2	5/16-24 UNF	B	OR	FPM	48	10	17	250	55	call
EG 0716.409 B	M16x2	7/16-20 UNF	B	OR	NBR	49	11	17	630	60	yes
EG 1020.409 B	M16x2	1/2-20 UNF	B	OR	NBR	50	11	19	630	66	call
EG 0916.409 B	M16x2	9/16-18 UNF	B	OR	NBR	50	12	19	630	69	yes
EG 0810.409 B ²	M16x2	M8x1	A	OR	FPM	47	8	17	250	56	call
EG 1010.409 B	M16x2	M10x1	A	OR	NBR	47	8	17	630	57	yes
EG 1215.409 B	M16x2	M12x1.5	E	ED	NBR	51	12	17	630	62	yes
EG 1415.409 B	M16x2	M14x1.5	E	ED	NBR	50	12	19	630	68	yes
EG 1615.409 B	M16x2	M16x1.5	E	ED	NBR	51	12	22	630	79	yes



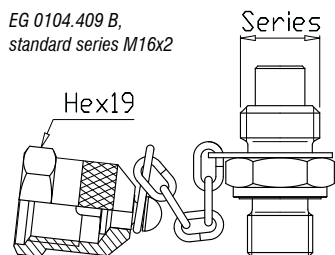
EG EG 0104.409 B



¹Adapter version. ²Do not use for new design.

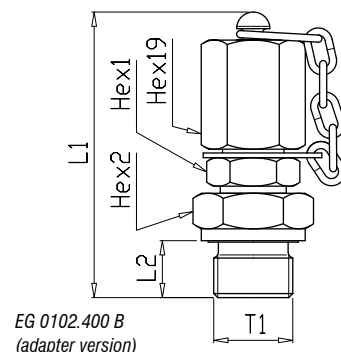
Description: Test point with male threaded stud. Popular standard series M16x2.
Materials: Steel.
Seals: Valve seals are generally made of Viton® (FPM). For other seals see table.
Standards: See *Technical Information*.
Caps: Standard cap is hex/knurli. Other cap types: see *Technical Information*.

EG 0104.409 B, standard series M16x2

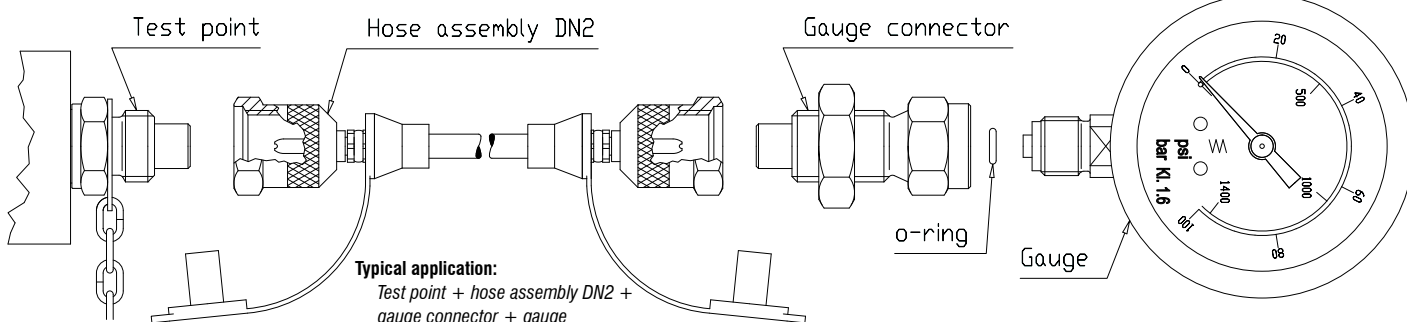


Sealing types
 For detailed description of sealing types, stud ends, and port holes see *Technical Information*.

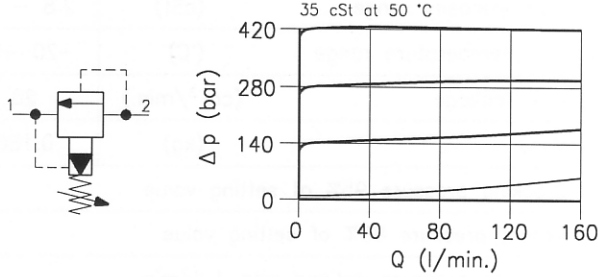
<p>Fig. A</p> <p>OR o-ring, metric</p>	<p>Fig. B</p> <p>OR o-ring, UNF</p>	<p>Fig. C</p> <p>CO conical</p>	<p>Fig. D</p> <p>CE cutting edge</p>	<p>Fig. E</p> <p>ED elastomeric seal</p>
--	---	---	--	--



EG 0102.400 B (adapter version)

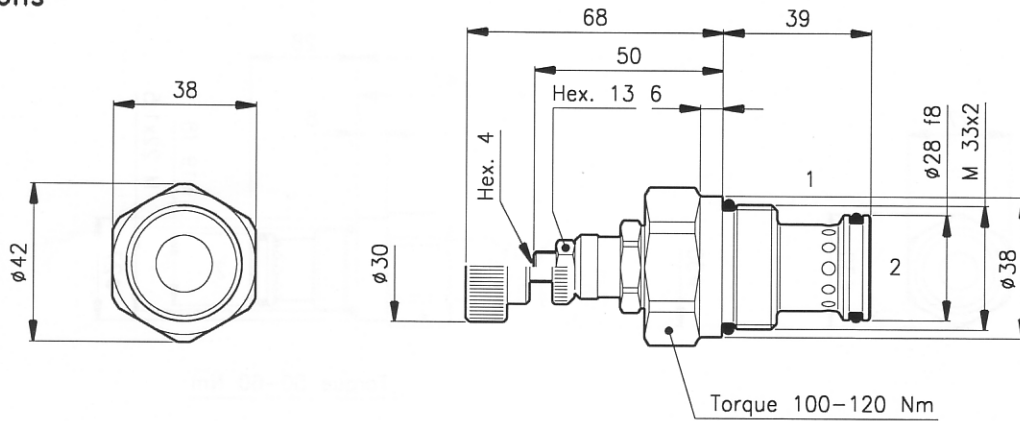


Technical features



Cavity	(For dimensions see catalogue 17.000)	S 50/2
Max. flow	(l/min.)	160
Max. inlet pressure	(bar)	420
Max. pressure on line 1	(bar)	210
Fluid viscosity range	(cSt)	2.8 - 380
Fluid temperature range	(°C)	-20 +80
Max. leakage	(cm ³ /min.)	25
Mass	(kg)	0.310
Cracking pressure 95% of setting value		
Reseat pressure 85% of setting value		
Cracking pressure defined with 1 l/min.		
Standard setting obtained with 10 l/min.		
Hydraulic fluid; mineral oil HM and HV ISO 6074		
Recommended filtration; 19/15 ISO 4466 (25 μ absolutes)		
Standard seals in Polyurethane and Buna N		

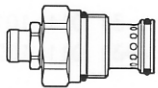
Dimensions



Ordering informations

LPI 50/D-N

LPI 50 = Valve type



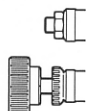
Standard springs

Type	Setting range	Factory set
D	= 14 - 210 bar	140 bar
Q	= 105 - 420 bar	315 bar

Adjustment type

N = Standard adjustment

V = Handknob adjustment



Codes:

LPI 50/D-N	51 011 103
LPI 50/Q-N	51 011 104
LPI 50/D-V	51 011 105
LPI 50/Q-V	51 011 106
External seals kit	90 620 106

LPI 50 valves can be assembled on standard bodies 50-LO series; for dimensions see catalogue 16.010