

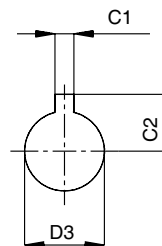
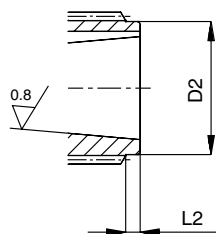
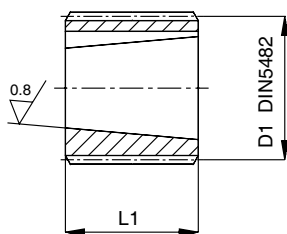
Semigiunti dentati serie BF per pompe unificate ad ingranaggi
 Series BF splined couplings for unified gear pumps
 Manchons dentés serie BF pour pompes unifiées à engrénages
 Kupplingsnaben serie BF fuer norm-zahnradpumpen

Conicità
 Taper
 Conicité
 Kegel

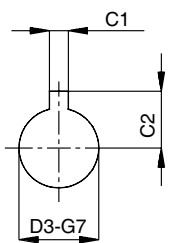
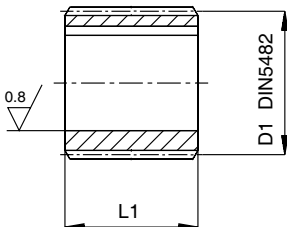
1 : 8

Foro cilindrico
 Parallel hole
 Trou cylindrique
 Zylindrisch bohrung

Conicità 1:8
 Taper 1:8
 Conicité 1:8
 Kegel 1:8



Foro cilindrico
 Parallel hole
 Trou cylindrique
 Zylindrisch bohrung



N.denti Teeth numbers N.dents Zahnezahl	D1	Riferimento pompe Pump reference Référence pompes Ordnungsgruppe	Sigla Model code Sigle Bestellzeichen	Codice Part number Matricule Bestellnummer	D2	D3	L1	L2	C1	C2		
12	20x17	05	BF1/05	31000200		6	7		2	4		
		T05	BF1/06	31000500		7	9			4,6		
		1	BF1-1	31000400		7,78	1:8	14,5		2,4	5,8	
		1C	BF1C	31000300		12		13,5		3	7,5	
14	25x22	1	BF2/1-1	31001000		7,78	1:8	14,5		2,4	5,8	
		1C	BF2/1C	31001500		12		13,5		3	7,5	
		1M	BF2/1M	31001200		11,80		16			8,5	
		2	BF2	31000700				22		3,2	9,3	
		2T	BF2T	31000800	21			22,5	2	4	9,1	
		2	BF2Z15	31001900		14,30				3,2		
15	28x25	2T	BF2TZ15	31002000					4	9,7		
		2	BF2,5/2	31003300					3,2			
17	32x28	2T	BF2,5/2T	31003000						9,7		
		3	BF2,5	31002300		18,61			4		11,7	
		2	BF3/2	31003900		14,30					3,2	9,7
18	35x31	2T	BF3/2T	31004000					4	12,5		
		3	BF3	31003500		18,61						
20	40x36	2	BF3,5/2	31005600		14,30				3,2	9,7	
		2T	BF3,5/2T	31006200						4		
		3	BF3,5/3	31005800		18,61					12,5	
		3,5	BF3,5	31005400		21,08					4,8	15,1
		2	BF4/2	31007000		14,30					3,2	9,7
23	48x44	2T	BF4/2T	31007100						4	12,5	
		3	BF4/3	31007200		18,61					15,1	
		3,5	BF4/3,5	31007300		21,08						4,8
		4	BF4	31006600		27,61					6,4	18,7