

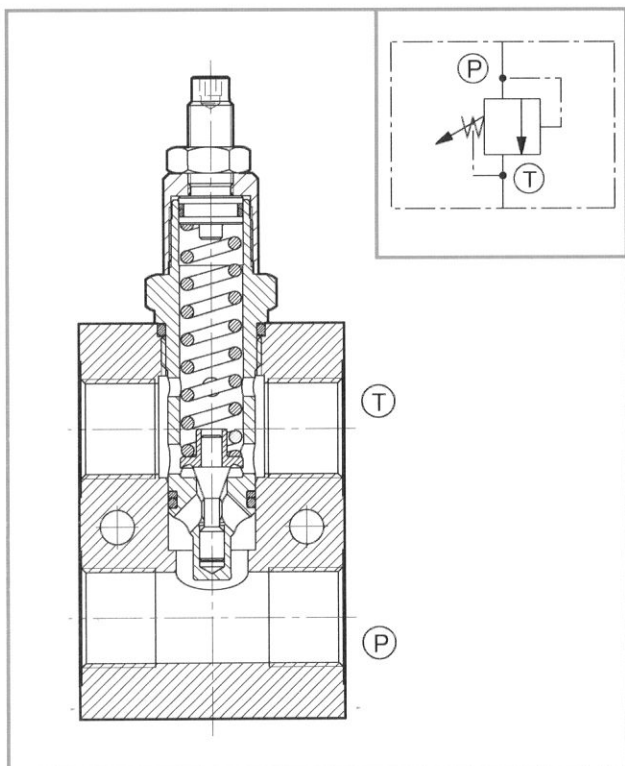
VPDC1

VALVOLA REGOLATRICE DI PRESSIONE DIRETTA IN LINEA IN LINE LIMITER PRESSURE VALVE, DIRECT ACTING POPPET DRUCKBEGRENZUNGSVENTIL LEITUNGSEINBAU

La valvola permette il passaggio d'olio da P in T solo quando la pressione presente in P supera la forza della molla, tarata tramite l'avvitamento della vite di regolazione.

The valve opens flow passage from port P to T only when the pressure applied at P exceeds the spring strength. The spring adjustment is an hexagonal allen head type.

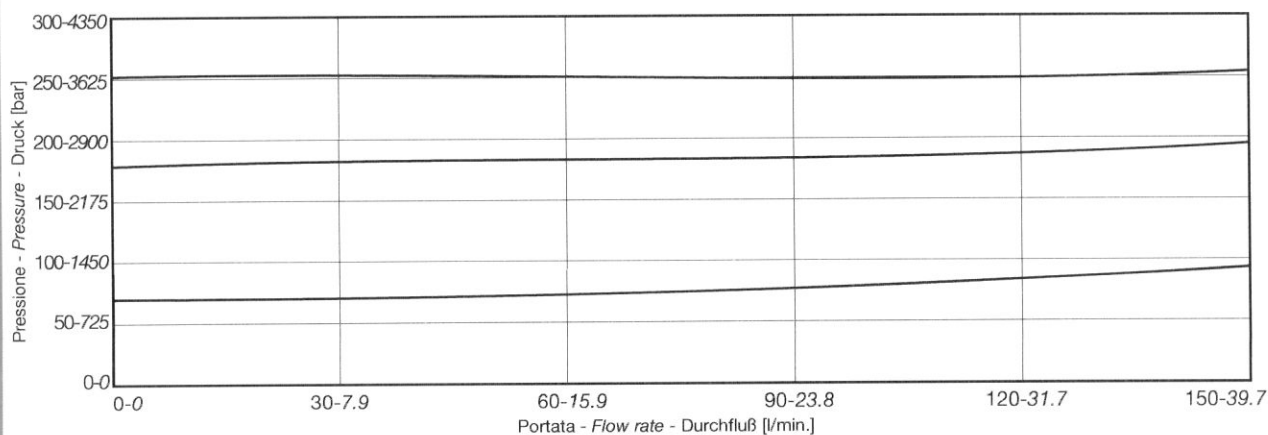
Dieses Ventil ermöglicht den Öldrchfluß von P nach T nur, wenn der Druck in P die Kraft der Feder überwindet, die beim Anschrauben der Justierschraube eingestellt worden ist.



DATI TECNICI TECHNICAL DATA TECHNISCHE ANGABEN

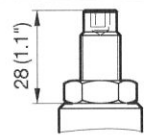
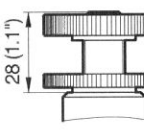
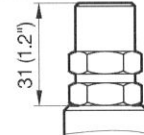
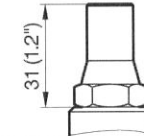
Pressione Max di funzionamento Max operating pressure Maximaler Betriebsdruck	250 (3646) bar (psi)
Portata massima all'ingresso Maximum flow to the inlet Max Eingangsdurchfluß	150 (39.7) l/min (gpm)
Temperature di esercizio Operating temperature Betriebstemperatur	-20 /+90 °C
Cavità Cavity Aufnahmebohrung	SVHC1200
Trafile interne Internal leakage Innere Leckage	3 cc/min. (200 bar; 50° C; 21 cSt)
Isteresi Reset pressure Hysterese	90%

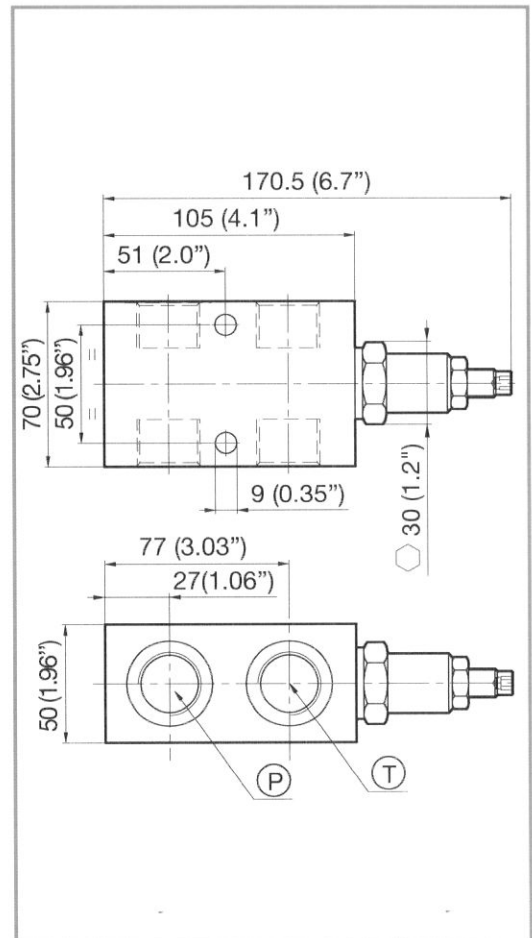
PRESTAZIONI PERFORMANCE LEISTUNG



Parametri di prova / Testing parameters / Prüfparameter: 50°C - 21 cSt



TIPO DI REGOLAZIONE REGULATION TYPE REGELUNGSTYP		
Regolazione a vite con chiave esagonale <i>With hexagonal allen head</i> Schraubeneinstellung mit Sechskantschlüssel		R
Regolazione con volantino <i>With handwheel</i> Handradeinstellung		V
Regolazione fissa con cappuccio <i>Set-adjustment, with cover cap</i> Feste Einstellung mit Kappe		C
Regolazione inviolabile <i>Factory pre-set, non adjustable</i> Unveränderliche Einstellung		P



COPPIA / TORQUE / ANZUGSMOMENT
G 3/4" = 140 - 103.2 [Nm-lbft] +/- 5%
1"1/16 -12 SAE = 150-110.6 [Nm-lbft] +/- 5%
PESO / WEIGHT / GEWICHT
1.1 Kg / 2.4 lb

ISTRUZIONE PER L'ORDINAZIONE • ORDERING INSTRUCTIONS • BESTELLEANLEITUNG

