

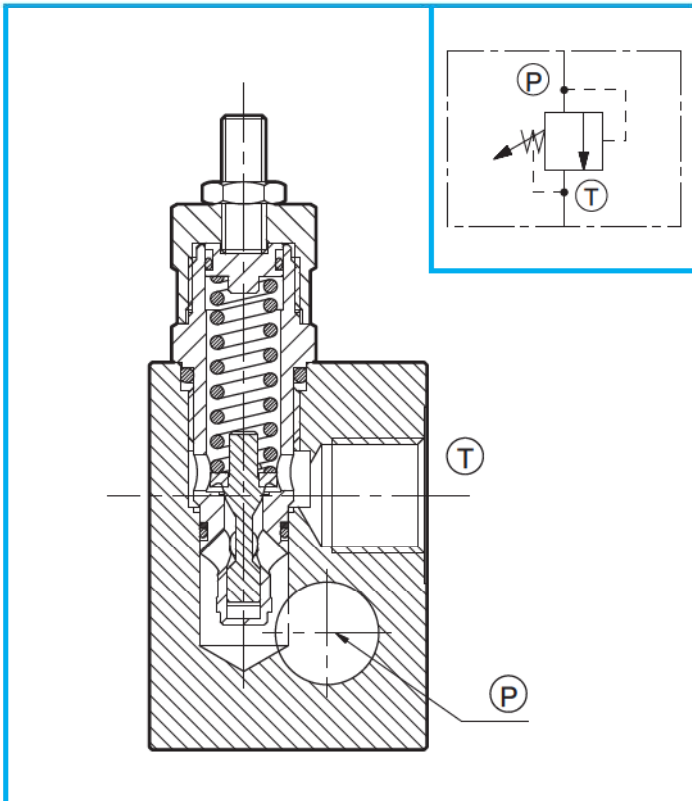
# VPDB1

## VALVOLA REGOLATRICE DI PRESSIONE DIRETTA IN LINEA IN LINE LIMITER PRESSURE VALVE, DIRECT ACTING POPPET DRUCKBEGRENZUNGSVENTIL LEITUNGSEINBAU

La valvola permette il passaggio d'olio da P in T solo quando la pressione presente in P supera la forza della molla, tarata tramite l'avvitamento della vite di regolazione.

The valve opens flow passage from port P to T only when the pressure applied at P exceeds the spring strength. The spring adjustment is an hexagonal allen head type.

Dieses Ventil ermöglicht den Ölrdchfluß von P nach T nur, wenn der Druck in P die Kraft der Feder überwindet, die beim Anschrauben der Justierschraube eingestellt worden ist.

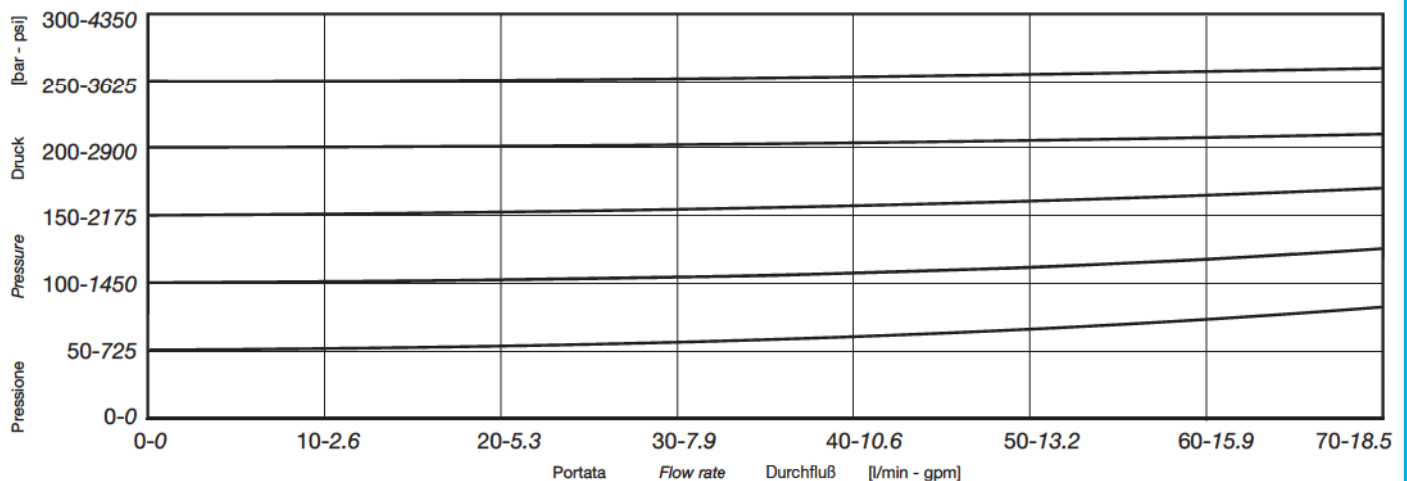


### DATI TECNICI TECHNICAL DATA TECHNISCHE ANGABEN

Pressione Max di funzionamento Max operating pressure Maximaler Betriebsdruck	<b>250 (3625) bar (psi)</b>
Portata nominale Nominal flow Volumenstrom	<b>70 (18.5) l/min (gpm)</b>
Temperature di esercizio Operating temperature Betriebstemperatur	<b>-20 / +90°C</b>
Cavità Cavity Aufnahmebohrung	<b>CVSB1201</b>
Trafile interne Internal leakage Innere Leckage	<b>3 cc/min (200 bar; 50° C; 21 cSt)</b>
Isteresi Reset pressure Schließdruck	<b>10%</b>

### PRESTAZIONI PERFORMANCE LEISTUNG

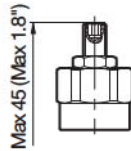
Parametri di prova  
Testing parameters  
Prüfparameter  
50°C  
21 cSt





**TIPO DI REGOLAZIONE  
REGULATION TYPE  
VERSTELLUNG**

Regolazione a vite con chiave esagonale  
*With hexagonal allen head*  
Schraubeneinstellung mit Sechskantschlüssel



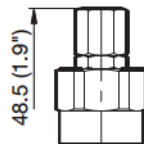
**R**

Regolazione con volantino  
*With handwheel*  
Handradeinstellung



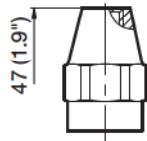
**V**

Regolazione fissa con cappuccio  
*Set-adjustment, with cover cap*  
Feste Einstellung mit Kappe

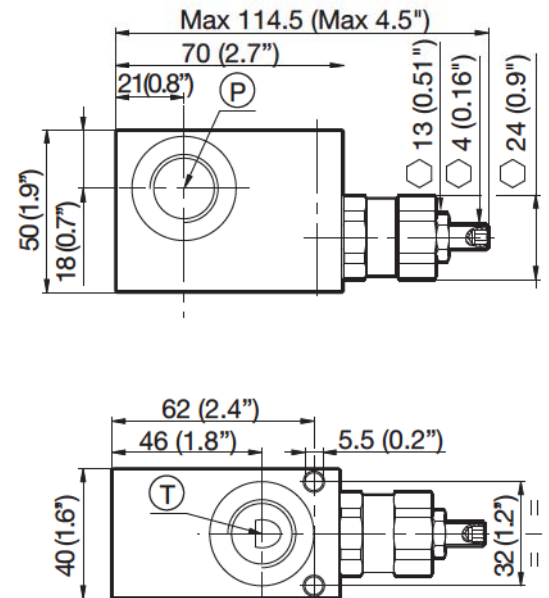


**C**

Regolazione inviolabile  
*Factory pre-set, non adjustable*  
Unveränderliche Einstellung



**P**



**COPPIA  
TORQUE  
ANZUGSMOMENT**

G 3/8" = 35-25.8 [Nm-lbft] +/- 5%  
G 1/2" = 70-51.6 [Nm-lbft] +/- 5%  
M18 x 1.5 = 40-29.5 [Nm-lbft] +/- 5%  
M22x1.5 ISO 6149 = 55-40.5 [Nm-lbft] +/- 5%

**PESO  
WEIGHT  
GEWICHT**

0.45 kg / 1 lb

**ISTRUZIONI PER L'ORDINAZIONE**

**ORDERING INSTRUCTIONS**

**BESTELLANLEITUNG**

**VPDB1**

Codice valvola  
*Valve code*  
Ventil-  
Bestellnummer

Tipo di regolazione  
*Regulation type*  
Verstellung

**R** Grano  
*Grain*  
Sechskant  
**V** Volantino  
*Handwheel*  
Handradeinstellung  
**C** Cappuccio  
*Cap*  
Kappe  
**P** Inviolabile  
*Non adjustable*  
Unveränderlich  
**F** Piombata  
*Leaded*  
Plombiert

Tipo di guarnizione  
*Seal type*  
Dichtungstyp

**N** NBR  
**V** VITON

Campo di regolazione  
*Adjustment range*  
Regelbereich

**X** 10-70 bar  
**Y** 70-150 bar  
**Z** 150-90 bar  
**H** 190-250 bar

Taratura  
*(esempio)*  
*Setting*  
*(example)*  
Druckeinstellung  
*(Beispiel)*

**180** 180 bar

Filettature  
*Threads*  
Gewinde

**G38** G 3/8"  
**G12** G 1/2"  
**M18** M18 x 1.5  
**B22** M22x1.5  
ISO 6149