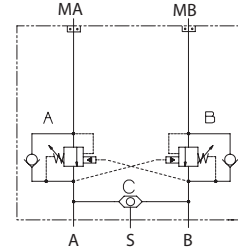


**OPERATION**

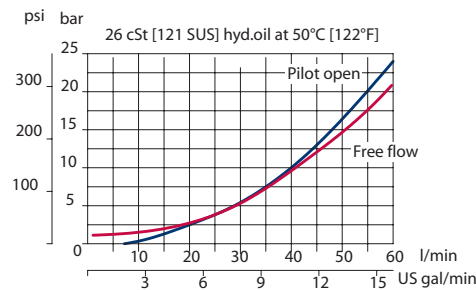
This is a dual counterbalance HIC with shuttle that mounts to OMP/OMR motors with BSP porting.

**Schematic**



**SPECIFICATIONS**

**Theoretical performance**



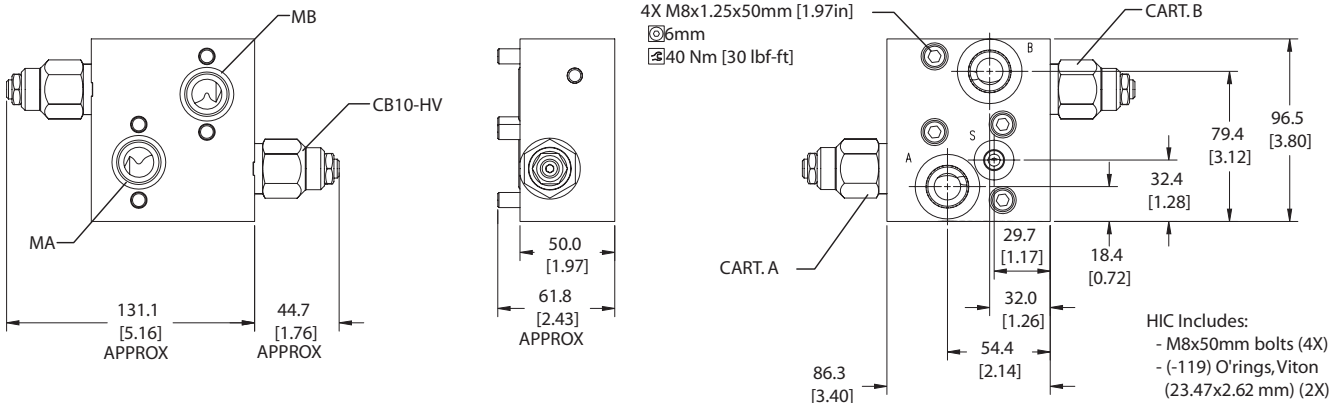
**Specifications**

Rated pressure	210 bar [3045 psi]
Rated flow at 22 bar [319 psi]	60 l/min [16 US gal/min]
Leakage	6 drops/min @ 70% of crack pressure
Weight	1.44 kg [3.17 lb]
Pilot ratio	3.0:1, 4.5:1, 10.0:1
Cartridge	CB10 HV
Shuttle	CP124-1
Shuttle/drain port	#4 SAE (1/8 BSP)
Service mount kit	11023162
Motor	OMP/OMR

**DIMENSIONS**

**Cross-sectional view**

mm [in]



MM - Motor Mount HICs Catalog  
 MM-OMP/OMR-LS-DCB10-HV

**ORDERING INFORMATION**

**MM-OMP/OMR-LS-DCB10-HV-1-C-1-E-100-B-10S**

