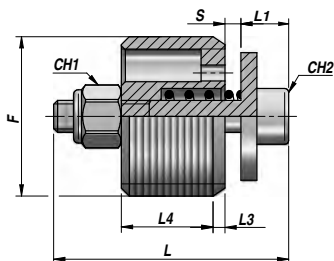
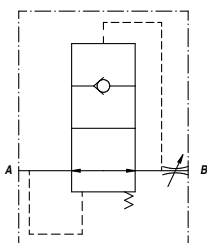


VALVOLA A PARACADUTE  
HOSE BURST VALVE  
ROHRBRUCHSICHERUNGSVENTIL

VUBA



Codice Code Bestell-Nr.	F BSP	Q MAX l/min	P MAX bar	S	Q STD l/min	Tipo Type Typ	L	L1	L3	L4	CH1	CH2	kg x 100
VCG390.100800	1/4"	24	350	1,0	18,2	VUBA 010	19	5	1	7	5,5	2,5	1,00
VCG390.201500	3/8"	45	350	1,5	35,5	VUBA 020	23	5	1,5	9,5	5,5	2,5	1,50
VCG390.301800	1/2"	66	350	1,9	60,0	VUBA 030	29	6	1,5	11,5	7	3	2,50
VCG390.402200	3/4"	169	350	2,2	149,0	VUBA 040	34	6	2,5	15,5	7	3	4,50
VCG390.502600	1"	223	350	2,6	190,0	VUBA 050	40	8,5	1,5	18,5	8	4	9,80

S = Apertura standard - Standard Opening - Standardöffnung  
SUPERFICI DI TENUTA LAPPATE - LAPPED TIGHT SURFACES - GELÄPTE DICHTFLÄCHEN

CARTUCCIA  
CARTRIDGE  
PATRONE

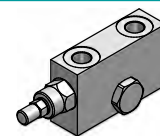
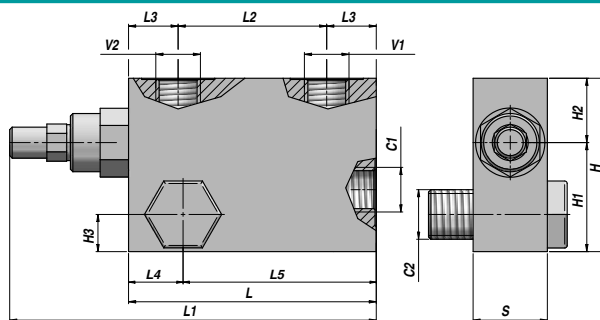
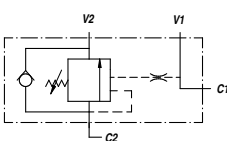
MATERIALE - MATERIAL: ACCIAIO - STEEL - STAHL

COLLETTORE: VEDI PAGINA 43  
VALVE ADAPTER: SEE PAGE 43  
GEHÄUSE: SIEHE SEITE 43

VALVOLA DI BILANCIAMENTO  
OVERCENTER VALVE  
SENKBREMSVENTIL

SEMPLICE EFFETTO  
SINGLE ACTING  
EINFACHWIRKEND

VBCD/A SE-FLV



Codice Code Bestell-Nr.	V1 - V2 BSP	C1 - C2 BSP	Q MAX l/min	P MAX bar	PILOT RATIO	Tipo Type Typ	L	L1	L2	L3	L4	L5	H1	H2	H3	H	S	kg
V2190.0392FLV	3/8"	3/8"	40	350	1:4,5	VBCD/A SE-FLV 3/8"	100	150	60	20	22	78	40	30	15	70	30	1,35
V2190.0412FLV	1/2"	1/2"	60	350	1:4,5	VBCD/A SE-FLV 1/2"	100	150	60	20	24	76	40	30	15	70	30	1,31

Taratura standard - Standard setting - Standard Einstellung : 320 bar  
Taratura minima - Minimum setting - Minimale Einstellung : 120 bar

MONTAGGIO SU CILINDRO  
CYLINDER MOUNTING  
MONTAGE AM ZYLINDER

MATERIALE - MATERIAL: ACCIAIO - STEEL - STAHL