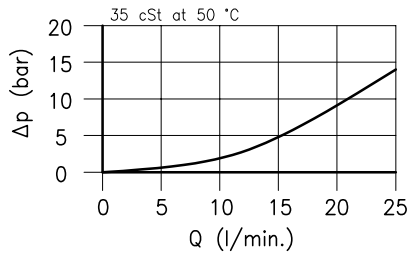
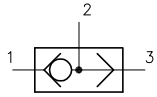
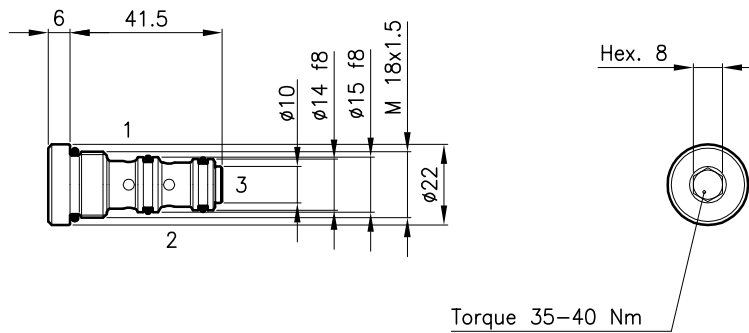


Technical features



Cavity	(For dimensions see catalogue 17.000)	S 20/3
Nominal flow	(l/min.)	20
Max. pressure	(bar)	350
Fluid viscosity range	(cSt)	2.8 - 380
Fluid temperature range	(°C)	-20 +80
Mass	(kg)	0.065
Hydraulic fluid; mineral oil HM and HV	ISO 6074	
Recommended filtration; 19/15 ISO 4466 (25 μ absolutes)		
Standard seals in Polyurethane and Buna N		

Dimensions



Ordering informations

CCI 20

CCI 20 = Valve type



Codes:

CCI 20 22 011 102

External seals kit 90 620 101

CCI 20 valves can be assembled on standard bodies 20-C3 series; for dimensions see catalogue 16.010