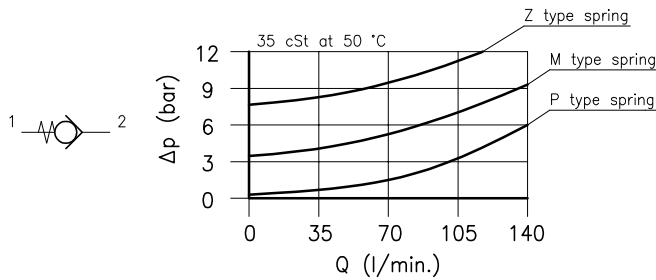
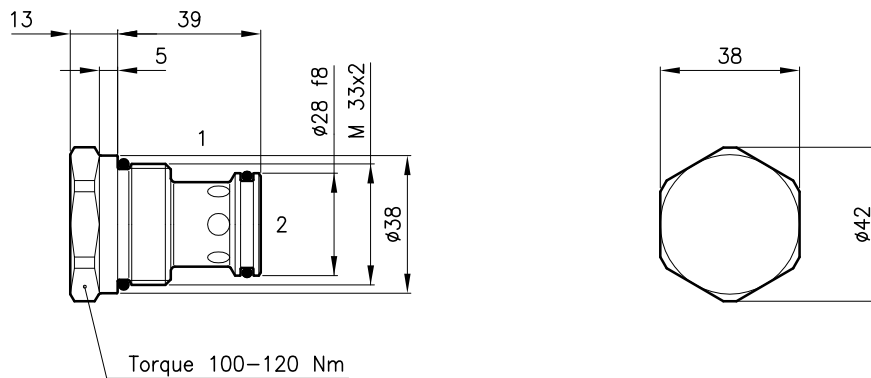


Technical features



Cavity (For dimensions see catalogue 17.000)	S 50/2
Nominal flow (l/min.)	135
Max. pressure (bar)	420
Cracking pressure (bar)	0.35-3.5-8
Fluid viscosity range (cSt)	2.8 - 380
Fluid temperature range (°C)	-20 +80
Mass (kg)	0.230
Hydraulic fluid; mineral oil HM and HV	ISO 6074
Recommended filtration; 19/15 ISO 4466 (25 μ absolutes)	
Standard seals in Polyurethane and Buna N	

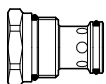
Dimensions



Ordering informations

CAE 50/P

CAE 50 = Valve type



Standard springs

P = 0.35 bar

M = 3.5 bar

Z = 8 bar

Codes:

CAE 50/P 52 011 100

CAE 50/M 52 011 101

CAE 50/Z 52 011 116

External seals kit 90 620 106

CAE 50 valves can be assembled on standard bodies 50-LO series; for dimensions see catalogue 16.010