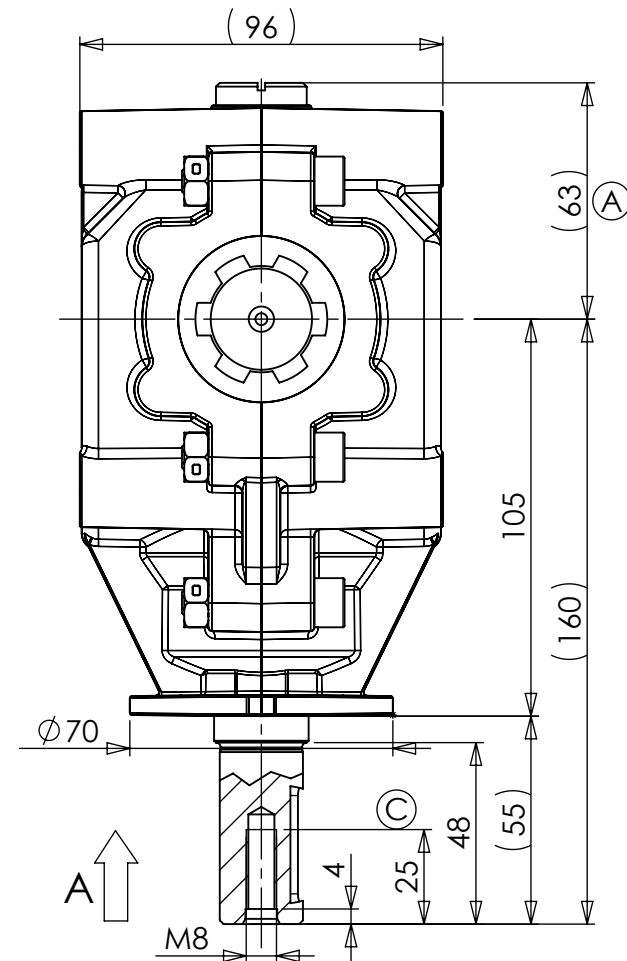
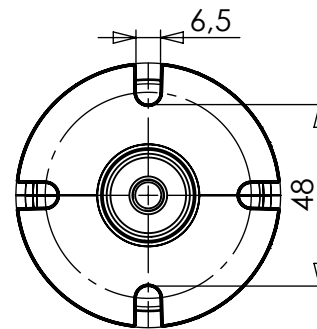


View from A



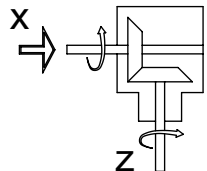
WARNING!

ROTATING SHAFTS MARKED ARE NOT SHIELDED. ANY SHAFT AND COUPLING NOT GUARDED BY LOCATION MUST BE SHIELDED BY AN INTERACTIVE GUARDING SYSTEM. BONDOLI & PAVESI DECLINES RESPONSIBILITY IF PROPER GUARDS ARE NOT PROVIDED AND MAINTAINED.



D	Sost. i codici erano 190250035/36 e aggiunti cod. 497011501R, 340E02501R. <i>Replaced codes 190250035/36 and added 497011501R, 340E02501R.</i>	05/11/2019	Lici
C	Modificata profondità foro filettato, aggiunta R finale ai codici ricambio, sostituita indicazione codici con numerazione su foglio esploso. <i>Modified hole length, added R to the spare part codes, replaced codes on exploded view.</i>	12/05/2017	Piumacci
Rev.	Descrizione	Data	Disegnato

MONTAGGIO / GEAR ARRANGEMENTS



RAPPORTO / RATIO

1:2,78

GIRI IN ENTRATA / INPUT SPEED

540

POTENZA IN ENTRATA / INPUT POWER

10 CV - 7 kW

TIPO / TYPE

1018

CLIENTE / CUSTOMER

TIPO DI MACCHINA / TYPE OF IMPLEMENT

PESO / WEIGHT (Kg)

5.27

DISEGNATO / DESIGNED BY

F.Vezzani

RIF.CLIENTE / CUSTOMER REF.

STUDIO / CONCEPT DRAWING

DATA / DATE

03-05-2004

BONDOLI & PAVESI

CODICE / CODE

S1018278R310

REV.

D