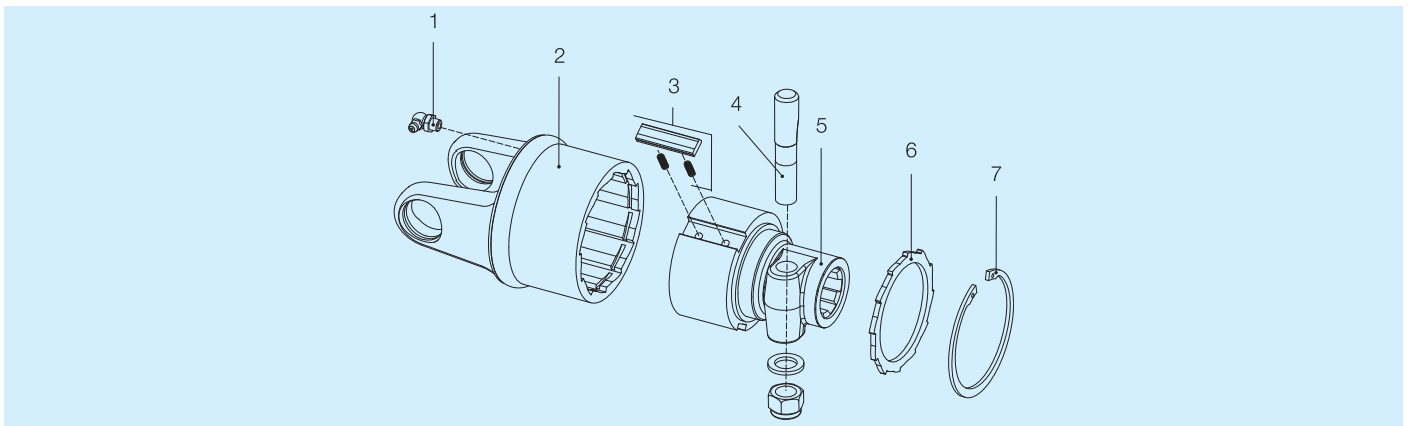


RA2

Maximum torque  
3800 Nm

| Size | B (mm)         |                 |                |                 |    | F   | G   | $\alpha$   | Spare parts code |                |            |            |            |
|------|----------------|-----------------|----------------|-----------------|----|-----|-----|------------|------------------|----------------|------------|------------|------------|
|      | S<br>1 3/8" Z6 | S<br>1 3/8" Z21 | S<br>1 3/4" Z6 | S<br>1 3/4" Z20 | S  |     |     |            | 1 3/8" Z6        | 1 3/8" Z6 (SX) | 1 3/8" Z21 | 1 3/4" Z6  | 1 3/4" Z20 |
| S6   | 140            | 140             | 142            | 142             | 32 | 160 | 32° | 601205601R | 602205601R       | 601205602R     | 601205603R | 601205604R |            |
| H7   | 147            | 147             | 149            | 149             | 29 | 160 | 29° | 601206601R | 602206601R       | 601206602R     | 601206603R | 601206604R |            |
| S8   | 160            | 160             | 162            | 162             | 42 | 160 | 28° | 601217601R | ---              | 601217602R     | 601217603R | 601217604R |            |

The codes in columns with heading **(SX)** are for counter-clockwise rotation. All other codes are for clockwise rotation.



| Ref. | Size | Spare parts code | Description              | Technical data     |
|------|------|------------------|--------------------------|--------------------|
| 1    |      | 348014000R20     | Grease fitting           |                    |
| 2    | S6   | 418052203R       | Outer housing + yoke     |                    |
|      | H7   | 418062203R       |                          |                    |
|      | S8   | 418172203R       |                          |                    |
| 3    |      | 4210E0001R03     | Pawl + spring kit        | L = 42,8           |
| 4    |      | 408000047R02     | Taper pin + washer + nut | 1 3/8" Z6 - Z21    |
|      |      | 408000046R02     |                          | 1 3/4" Z6 - Z20    |
| 5    |      | 5150E0301R       | Hub with taper pin       | 1 3/8" Z6          |
|      |      | 5150E3701R       |                          | 1 3/8" Z21         |
|      |      | 5150E0401R       |                          | 1 3/4" Z6          |
|      |      | 5150E3801R       |                          | 1 3/4" Z20         |
| 6    |      | 246000132R02     | Locking plate            | 1 3/8" Z6 - Z21    |
|      |      | 246000134R02     | Split locking plate      | 1 3/4" Z6 - Z20    |
| 7    |      | 338005000R20     | Snap ring                | 82 x 2.5 DIN 472/1 |



For primary drivelines, always install any torque limiter or overrunning clutch on the implement side.  
All rotating parts must be guarded.