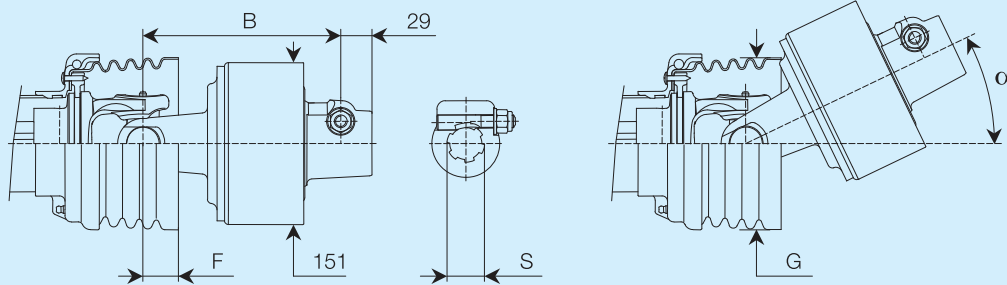


LR24



Size	Torque Nm	B (mm)				F mm	G mm	α °	Spare parts codes for use at 540 min ⁻¹			
		S 1 3/8" Z6	S 1 3/8" Z21	S 1 3/4" Z6	S 1 3/4" Z20				1 3/8" Z6	1 3/8" Z21	1 3/4" Z6	1 3/4" Z20
S6	2500	176	176	176	176	32	160	24°	6WG265003R	6WG265037R	6WG265004R	6WG265038R
	2900								6WH266003R	6WH266037R	6WH266004R	6WH266038R
H7	2600	184	184	184	184	29	160	28°	6WH269003R	6WH269037R	6WH269004R	6WH269038R
	3000								6WL265003R	6WL265037R	6WL265004R	6WL265038R
S8	2500	184	184	184	184	42	160	19°	6WL270003R	6WL270037R	6WL270004R	6WL270038R
	3000								6WL265003R	6WL265037R	6WL265004R	6WL265038R
H8	2500	184	184	184	184	42	160	19°	6WL270003R	6WL270037R	6WL270004R	6WL270038R
	3000								6WM270003R	6WM270037R	6WM270004R	6WM270038R
S9	3000	192	192	192	192	49	180	18°				

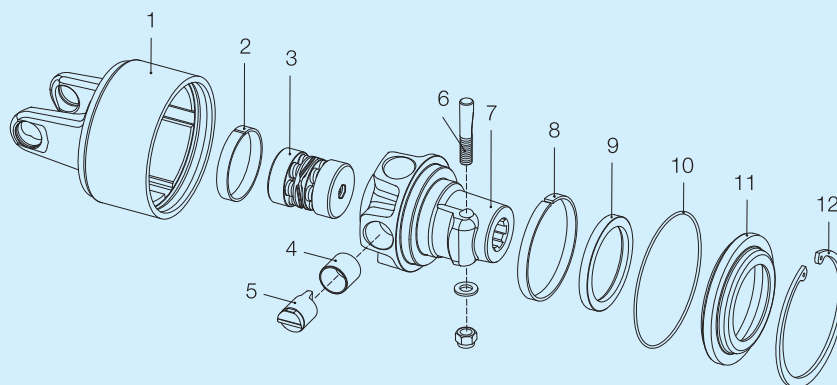
Size	Torque Nm	B (mm)				F mm	G mm	α °	Spare parts codes for LR24 with improved re-engagement			
		S 1 3/8" Z6	S 1 3/8" Z21	S 1 3/4" Z6	S 1 3/4" Z20				1 3/8" Z6	1 3/8" Z21	1 3/4" Z6	1 3/4" Z20
S6	2500	176	176	176	176	32	160	24°	6WGE65003R	6WGE65037R	6WGE65004R	6WGE65038R
H7	2300	184	184	184	184	29	160	28°			6WHE63901R (SX)	
	2600								6WHE66003R	6WHE66037R	6WHE66004R	6WHE66038R
	2900								6WHE69003R	6WHE69037R	6WHE69004R	6WHE69038R
S8	2500	184	184	184	184	42	160	19°	6WLE65003R	6WLE65037R	6WLE65004R	6WLE65038R
	3000								6WLE70003R	6WLE70037R	6WLE70004R	6WLE70038R
H8	2500	184	184	184	184	42	160	19°	6WLE65003R	6WLE65037R	6WLE65004R	6WLE65038R
	3000								6WLE70003R	6WLE70037R	6WLE70004R	6WLE70038R
S9	3000	192	192	192	192	49	180	18°	6WME70003R	6WME70037R	6WME70004R	6WME70038R

The codes in columns with heading **(SX)** are for counter-clockwise rotation. All other codes are for clockwise rotation.



For primary drivelines, always install any torque limiter or overrunning clutch on the implement side.
All rotating parts must be guarded.

LR24



Ref.	Size	Spare parts codes for use at 540 min ⁻¹	Codes with improved re-engagement	Description	Technical data
1	S6	4310G2152R	4310GE151R	Outer housing	
	H7	431062152R	4310HE151R		
	S8 - H8	4310L2152R	4310LE151R		
	S9	431082152R	4310ME151R		
2		240000205R02	240000205R02	Bushing	
3		421166502R	421166505R	Spring kit*	2500 Nm
		421166601R	421166605R		2600 Nm
		421166902R	421166905R		2900 Nm
		421167001R	421167005R		3000 Nm
4		258000100R05	258000100R05	Sleeve	
5		250000108R05	250000101R05	Cam	
6		408000047R02	408000047R02	Taper pin	1 3/8" Z6 - Z21
		408000052R02	408000052R02		1 3/4" Z6 - Z20
7		515160301R	515160305R	Hub with taper pin and bushings	1 3/8" Z6
		515163701R	515163705R		1 3/8" Z21
		515160401R	515160405R		1 3/4" Z6
		515163801R	515163805R		1 3/4" Z20
8		240000201R02	240000201R02	Bushing	
9		355006080R02	355006080R02	Sealing ring	80 x 100 x 10 mm
10		358000006R02	358000006R02	O-ring	139 x 2.6 mm
11		240000202R02	240000202R02	Locking plate	
12		338000138R20	338000138R20	Snap ring	138 x 4 DIN 472/1

* Other kits are available for use at 540 min⁻¹: 1700 Nm - 1900 Nm - 2000 Nm - 2100 Nm - 2300 Nm.
The codes should be requested from the commercial office.



For primary drivelines, always install any torque limiter or overrunning clutch on the implement side.
All rotating parts must be guarded.