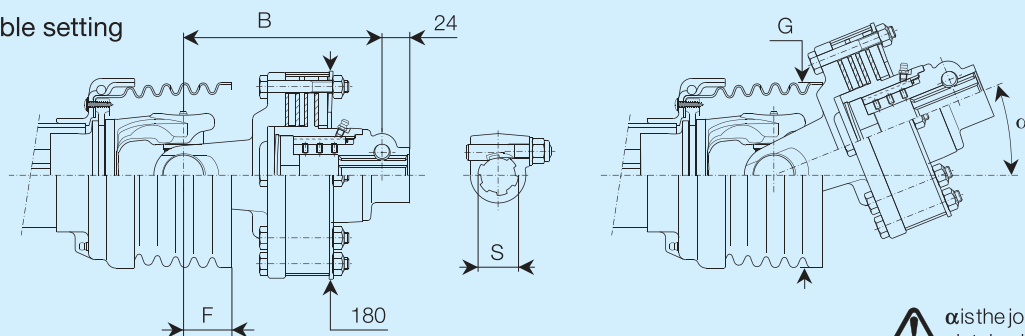



Combination friction torque limiter and overrunning clutch

FNT34


Non-adjustable setting

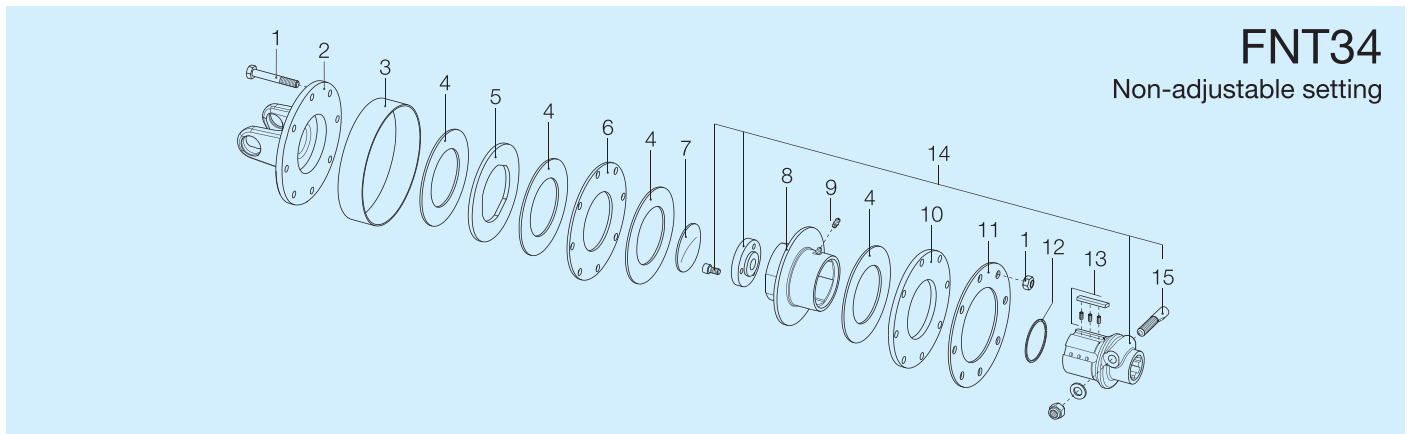


 α is the joint angle at which the clutch will contact the shield.

| Size | Torque Nm | B (mm) | | | | F mm | G mm | α ° | Spare parts code | | | |
|------|--------------|----------------|-----------------|----------------|-----------------|---------|---------|---------------|------------------|------------|-----------|------------|
| | | S 1 3/8" Z6 | S 1 3/8" Z21 | S 1 3/4" Z6 | S 1 3/4" Z20 | | | | 1 3/8" Z6 | 1 3/8" Z21 | 1 3/4" Z6 | 1 3/4" Z20 |
| S6 | *1200 | 158 | 158 | --- | --- | 32 | 160 | 24° | 658G48103R | 658G48137R | --- | --- |
| | 1450 | | | | | | | | 658G53103R | 658G53137R | --- | --- |
| H7 | 1200 | 166 | 166 | --- | --- | 29 | 160 | 28° | 658H48103R | 658H48137R | --- | --- |
| | *1450 | | | | | | | | 658H53103R | 658H53137R | --- | --- |
| | 1800 | | | | | | | | 658H58103R | 658H58137R | --- | --- |
| S8 | 1450 | 172 | 172 | --- | --- | 42 | 160 | 18° | 658L53103R | 658L53137R | --- | --- |
| | *1800 | | | | | | | | 658L58103R | 658L58137R | --- | --- |
| H8 | 1450 | 172 | 172 | --- | --- | 42 | 160 | 18° | 658L53103R | 658L53137R | --- | --- |
| | *1800 | | | | | | | | 658L58103R | 658L58137R | --- | --- |
| S9 | *1800 | 174 | 174 | --- | --- | 49 | 180 | 13° | 658M58103R | 658M58137R | --- | --- |

* Maximum recommended settings for 1000 min⁻¹ velocity

 For primary drivelines, always install any torque limiter or overrunning clutch on the implement side.
All rotating parts must be guarded.



FNT34

Non-adjustable setting

| Ref. | Size | Spare parts code | Description | Technical data |
|------|------|------------------|----------------------------|---------------------|
| 1 | | 432000045R08 | Bolt | M10 x 65 mm |
| 2 | S6 | 2530G1L01R | Flange yoke | |
| | H7 | 2530H1L01R | | |
| | S8 | 2530L1L01R | | |
| | S9 | 2530M1L01R | | |
| 3 | | 240000218R02 | Adjustment band | |
| 4 | | 247000054R08 | Friction lining | D = 140 ; d = 85 mm |
| 5 | | 2481L0003R02 | Driving plate | |
| 6 | | 2481L0001R02 | Inner plate | Thickness = 4 mm |
| 7 | | 240000746R05 | Locking plate | |
| 8 | | 4271L0101R | Overrunning clutch housing | |
| 9 | | 348017000R20 | Grease fitting | |
| 10 | | 2481L0002R02 | Pressure plate | Thickness = 8 mm |
| 11 | | 367FT340A | Belleville spring | 1200 Nm |
| | | 367FT340C | | 1450 Nm |
| | | 367FT340D | | 1800 Nm |
| 12 | | 339002060R20 | Snap ring | |
| 13 | | 4211L0001R06 | Pawl + springs kit | |
| 14 | | 5151L0351R | Hub with taper pin | 1 3/8" Z6 |
| | | 5151L3751R | | 1 3/8" Z21 |
| 15 | | 408000047R02 | Taper pin | 1 3/8" Z6 - Z21 |



For primary drivelines, always install any torque limiter or overrunning clutch on the implement side.
All rotating parts must be guarded.