

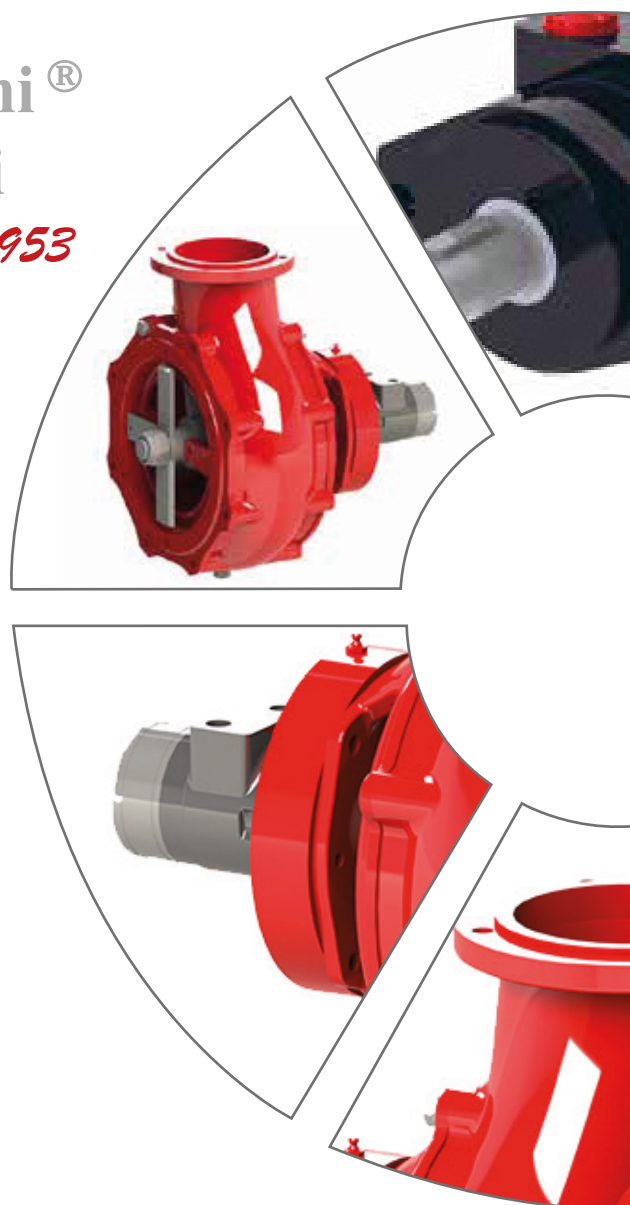
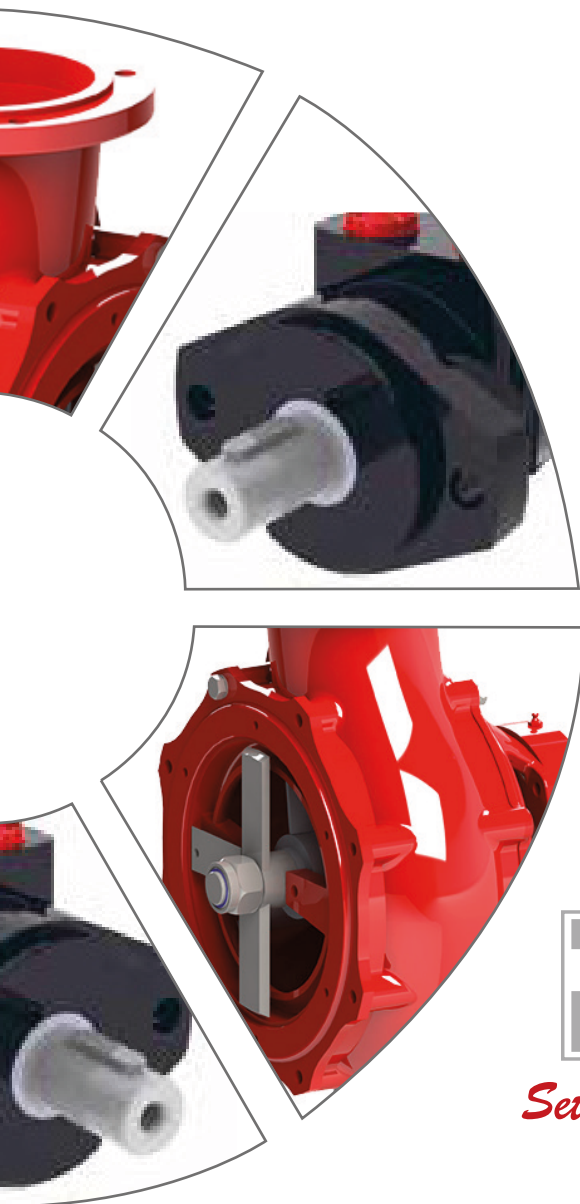
# FILLER

Technical catalogue  
Catalogo tecnico  
Technischer Katalog



**Battioni®**  
**Pagani**

*Setting the pace since 1953*





## FEATURES

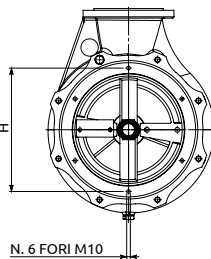
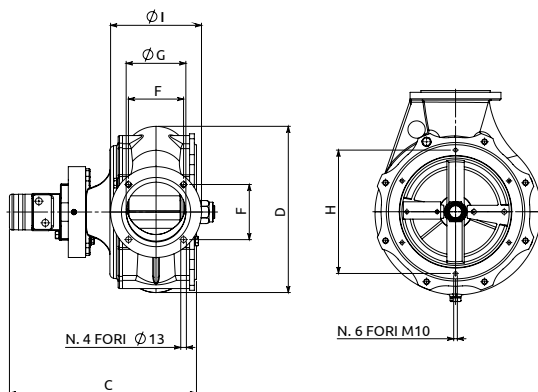
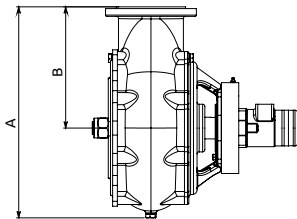
- **BATTIONI PAGANI POMPE® FILLER IS A CENTRIFUGAL PUMP IN CAST-IRON MATERIAL WITH AN IMPELLER OPERATED BY AN HYDRAULIC MOTOR.**
- **IT FILLS ENTIRELY THE TANK**
- **IT INCREASES FILLING SPEED, LENGTHENING LIFETIME OF THE VACUUM PUMP AND MAINTENANCE INTERVALS**
- **THE LOAD IS MORE HOMOGENEOUS**
- **FIBERS MAY BE TRITURATED BY FITTING THE CUTTING DEVICE ON REQUEST**
- **THE FOAM IS ELIMINATED**
- **IT IS COMPATIBLE WITH EVERY KIND OF TANK**
- **IT IS POSSIBLE TO USE THE ACCELERATOR WITH STARP UMP – K/KA VERSION AND HYDRAULIC PUMP**
- **WEIGHT: 60 KG ONLY, HYDRAULIC MOTOR INCLUDED**
- **MECHANICAL SEAL AS SERIES**
- **HYDRAULIC MOTOR WITH ORBITAL DISTRIBUTION: MIN 60 L/MIN AT 130 BAR; MAX 75 L/MIN AT 165 BAR**
- **HYDRAULIC MOTOR STANDARD**

## CARATTERISTICHE

- FILLER BATTIONI PAGANI POMPE® È UNA POMPA CENTRIFUGA IN GHISA LA CUI GIRANTE È AZIONATA DA UN MOTORE IDRAULICO.
- RIEMPIE LA BOTTE AL 100%
- AUMENTA LA VELOCITÀ DI RIEMPIMENTO ALLUNGANDO LA VITA DELLA POMPA DA VUOTO E GLI INTERVALLI DI MANUTENZIONE
- RENDE OMOGENEO IL CARICO
- MONTANDO IL TRINCIATORE IN OPZIONE, TRITURA LE FIBRE
- ELIMINA L'EFFETTO SCHIUMA
- COMPATIBILE CON QUALSIASI TIPO DI BOTTE E CISTERNA
- POSSIBILITÀ DI UTILIZZO CON POMPA BATTIONI PAGANI POMPE® STAR VERSIONE K/KA E POMPA IDRAULICA
- LEGGERO: SOLO 60 KG MOTORE IDRAULICO COMPRESO
- TENUTA MECCANICA DI SERIE
- MOTORE IDRAULICO CON DISTRIBUZIONE ORBITALE: DA MIN 60 L/MIN A 130 BAR A MAX 75 L/MIN A 165 BAR
- MOTORE IDRAULICO STANDARD

## EIGENSCHAFTEN

- FILLER VON BATTIONI PAGANI POMPE® IST EINE KREISELPUMPE AUS GUSSEISEN, DEREN LAUFRAD ÜBER EINEN HYDRAULIKMOTOR BETRIEBEN WIRD
- FÜLLT DAS FASS ZU 100%
- STEIGERT DIE FÜLLGESCHWINDIGKEIT UND VERLÄNGERT GLEICHZEITIG DIE LEBENSZEIT DER VAKUUMPUMPE SOWIE DIE WARTUNGSZEITRÄUME
- GLEICHMÄSSIGES BEFÜLLEN
- DURCH MONTAGE DES HÄCKSELMESSERS (OPTIONAL) WERDEN WERDEN FASERN ZERKLEINERT
- SCHAUMBILDUNG WIRD VERHINDERT
- KOMPATIBEL MIT JEDER ART VON FASS ODER TANK
- EINSATZ MIT PUMPEN VON BATTIONI PAGANI POMPE® DER AUSFÜHRUNG STAR K/KA UND HYDRAULIKPUMPE MÖGLICH
- LEICHT: NUR 60 KG INKLUSIVE HYDRAULIKMOTOR
- DICHTUNG SERIENMÄSSIG
- HYDRAULIKMOTOR MIT ORBITALER VENTILSTEUERUNG: VON MIN. 60 L/MIN BEI 130 BAR BIS MAX. 75 L/MIN BEI 165 BAR
- HYDRAULIKMOTOREN ALS SERIE



## TECHNICAL DATA - OVERALL DIMENSIONS

	CODE	A	B	C	D	E	F	G	H	I	ABSORPTION	RATE OF FLOW	Kg	Article
FILLER WITH FLANGE	6080200316	476	280	430	384	200	127	140	285	210	2,8 Kw	2800 l/min	60	6001/D
FILLER WITH CUTTING DEVICE	6080200317	476	280	430	384	200	127	140	285	210	3 Kw	2800 l/min	60	6001/E



**RANGE OIL TEMPERATURE -30° c +60° C**  
**MAX WORKING PRESSURE HYDRAULIC MOTOR 165 bar (2475 psi)**  
**PRESSURE APPLICATION 80 bar**  
**MAX OIL CAPACITY 60 l/min.**

TEMPERATURA AMMISSIBILE DELL'OLIO -30° c +60° C  
 PRESSIONE MAX MOTORE IDRAULICO 165 bar CONTINUA (2475 psi)  
 PRESSIONE APPLICAZIONE 80 bar  
 PORTATA MAX OLIO 60 l/min. CONTINUA

CODE	Model	Hydraulic Swivel Joint RPM	Kg	Article
5020400038	FILLER	500	5.9	2601/F

ZULÄSSIG ÖLTEMPERATUR -30° c +60° C  
 MAX DRUCK DES HYDRAULIKES MOTORS 165 bar DAUERND (2475 psi)  
 ANWENDUNG DRUCK 80 bar  
 MAX DURCHFLOßMENGE ÖL 60 l/min. DAUERND



Battioni®  
Pagani

*Setting the pace since 1953*



## **Battioni Pagani Pompe S.p.A.**

Via Enzo Ferrari, 2  
43058 Sorbolo (PR) - Italy

Ph. +39 0521 663203

Fax +39 0521 663206



[www.bapag.it](http://www.bapag.it)  
[info@bapag.it](mailto:info@bapag.it)

