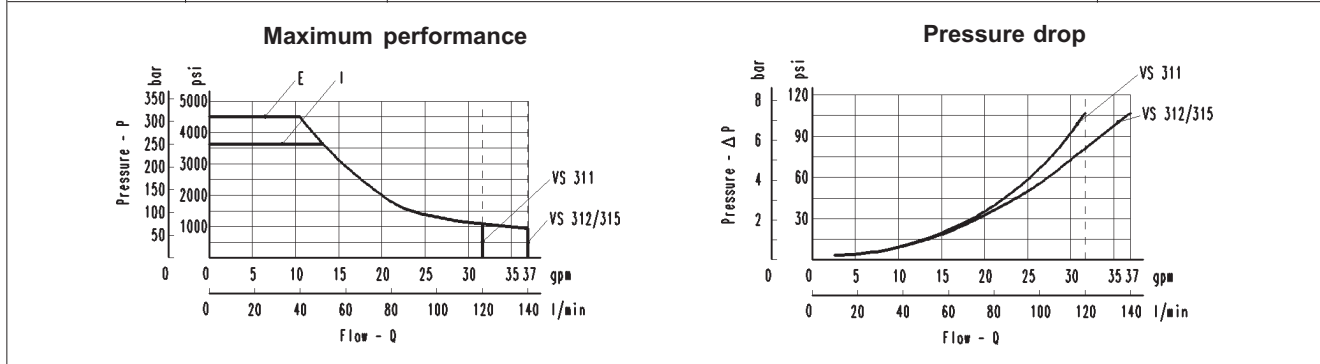


6 WAYS FLOW DIVERTERS



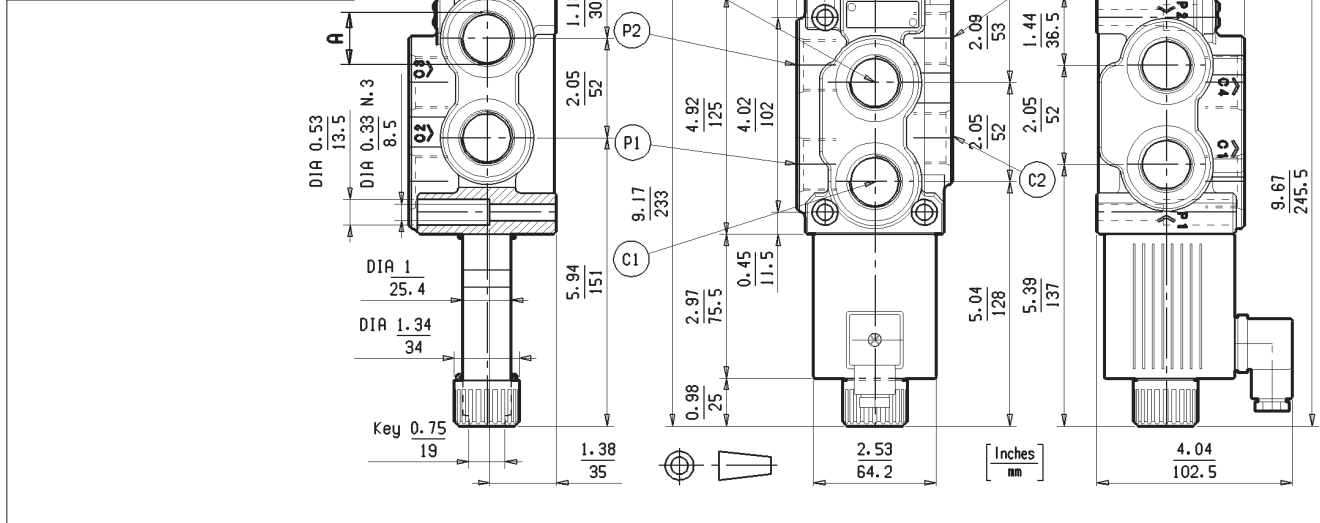
VS 311/312/315 **L7.53.U.J.W.V.X.Y.Z**

Max. pressure: 4500 psi (310 bar)		Max. flow: 37 gpm (140 l/min)		Ports: 1/2" G - 3/4" G - SAE12				
W	Circuit	Transit position	W	Circuit	Transit position			
6A			6F					
6B								
6E								
V	Drain	Circuit	Spool types			Pressure max		
I	Int. D.I.		6A	6B	6E		6F	6G
E	Ext. D.E.		3626 psi (250bar)	3626 psi (250bar)	3626 psi (250bar)		4500 psi (310bar)	4500 psi (310bar)
Coils		C65	Standard			Pag. 35		



Internal leakage on C ports	MIN	MAX	Mineral oil with 32 cSt viscosity, at 104°F (40°C) and 1450 psi (100 bar) pressure.
	In³/min (cm³/ min)	In³/min (cm³/ min)	
	0,7 (12)	1,8 (30)	

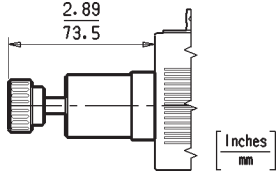
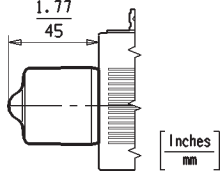
U	Ports (A)	Ports (A1)	Model
4	1/2" G	1/4" G	VS 311
5	3/4" G	1/4" G	VS 312
E	SAE12	SAE4	VS 315
Weights lbs (kg)		11,2 (5,1)	



6 WAYS FLOW DIVERTERS

VS 311/312/315

L7.53.U.J.W.V.X.Y.Z

Tube-Plug Key. 0,75-1,06: 18,4+19,9 ft-lb (ch. 19-27mm: 25+27Nm)	Coil retainer nut Dia.1,34: 5,2+5,9 ft-lb (Ø.34: 7+8Nm)	Fixing screws N°3 DIN 912-8,8 M8x45: 11,1+11,8 ft-lb (N°3 DIN 912-8,8 M8x45: 15+16Nm)
J _F 	J _P 	
Screwed manual override EF Reference: LC2DZEF	Push-button manual override EP Reference: 281-0010	

ORDERING CODE

L 7 5 3 U J W V X Y Z

U	PORTS	SEE PAGE 19	J	OPERATED							
V	DRAIN	SEE PAGE 19	14	ELECTRICALLY OPERATED (DZ)							
W	CIRCUIT	SEE PAGE 19	4F	ELECTRICALLY OPERATED + EF							
X	VOLTAGE		4P	ELECTRICALLY OPERATED + EP							
			Y	AVAILABLE CONNECTIONS							
00	WITHOUT COIL		00	01	02	03	07	20	31	34	
OB	12V DC		X								
AD	13V DC			X	X	X	X	X	X	X	
OC	24V DC			X	X	X	X	X	X	X	
AC	27V DC			X	X		X				
OD	48V DC			X	X			X			
OV	24V AC (RAC 21.5 DC)			X	X			X			
OW	110V AC (RAC 98 DC)			X	X			X			
OZ	230V AC (RAC 207 DC)			X	X			X			
Y	CONNECTION		Z	VERSION							
00	WITHOUT COIL AND CONNECTOR		0	STANDARD							
01	WITH COIL, WITHOUT CONNECTOR		V	SEALS IN VITON							
02	WITH CONNECTOR DIN 43650										
03	AMP JUNIOR										
07	DT04-2P DEUTSCH										
20	Cable 59,05 Inc. (1500 mm)										
31	Cable 13,78 Inc. (350 mm)										
34	Cable 13,78 Inc. (350 mm) + DT04-2P DEUTSCH										