



## Catalogo generale ricambi

General spare parts catalogue

Catalogue générale des pièces de rechange

Ersatzteile-katalog

Catálogo de piezas



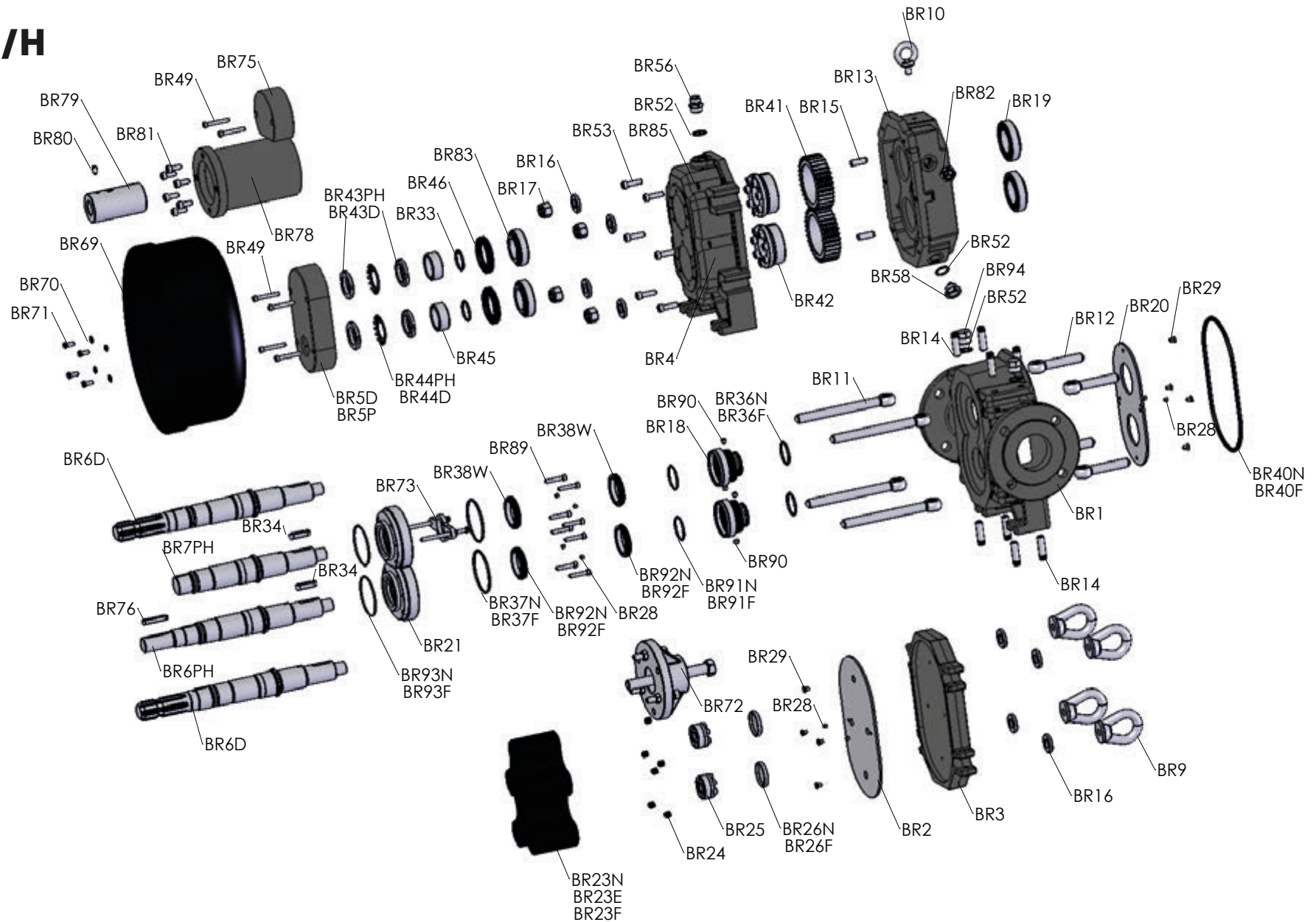
**Battioni®**  
**Pagani**

*Setting the pace since 1953*



# BR EVO 50 P/D/H

Rel. 0 del 15.01.2018













## BR EVO

<i>Articolo</i> (Article)	<i>Codice</i> (Code)	<i>Descrizione</i>	<i>(Description)</i>	<i>Q.ty</i>	<i>Um</i>
BR1	4440001166	CORPO POMPA BR-EVO 50	HOUSING BR-EVO 50	1	PCS
BRE1	4440001001	CORPO POMPA BR-EVO 90	HOUSING - BR-EVO 90	1	PCS
BREV1	4440001002	CORPO POMPA BR-EVO 170	HOUSING - BR-EVO 170	1	PCS
BREVO1	4440001003	CORPO POMPA BR-EVO 260	HOUSING - BR-EVO 260	1	PCS
BR2	4440001185	PIASTRA ANTIUSURA COP.POST BR-EVO 50	WEAR PLATE BACK COVER BR-EVO 50	1	PCS
BRE2	4440001004	PIASTRA ANTIUSURA COP.POST BR-EVO 90-170	WEAR PLATE BACK COVER BR-EVO 90-170	1	PCS
BREVO2	4440001005	PIASTRA ANTIUSURA COP.POST BR-EVO 260	WEAR PLATE BACK COVER BR-EVO 260	1	PCS
BR3	4440001006	COPERCHIO POSTERIORE BR-EVO 50	BACK COVER BR-EVO 50	1	PCS
BRE3	4010601161	COPERCHIO POSTERIORE BR-EVO 90	BACK COVER BR-EVO 90	1	PCS
BREV3	4010601162	COPERCHIO POSTERIORE BR-EVO 170	BACK COVER BR-EVO 170	1	PCS
BREVO3	4010601164	COPERCHIO POSTERIORE BR-EVO 260	BACK COVER BR-EVO 260	1	PCS
BR4	4440001174	CORPO SUPPORTO ALBERI BR-EVO 50	SHAFT HOLDER BODY BR-EVO 50	1	PCS
BRE4	4440001009	CORPO SUPPORTO ALBERI BR-EVO 90-170	SHAFT HOLDER BODY BR-EVO 90-170	1	PCS
BREVO4	4440001010	CORPO SUPPORTO ALBERI BR-EVO 260	SHAFT HOLDER BODY BR-EVO 260	1	PCS
BR5D	4440001183	COPERCHIO ANTERIORE BR-EVO 50 D	FRONT COVER BR-EVO 50 D	1	PCS
BR5P	4440001184	COPERCHIO ANTERIORE BR-EVO 50 P	FRONT COVER BR-EVO 50 P	1	PCS
BRE5	4440001011	COPERCHIO ALBERO CONDUT BR-EVO90-260/P/D	DRIVING SHAFT COVER BR-EVO 90-260/P/D	2	PCS



**BR EVO**

<i>Articolo</i> (Article)	<i>Codice</i> (Code)	<i>Descrizione</i>	<i>(Description)</i>	<i>Q.ty</i>	<i>Um</i>
BR6D	4440001175	ALBERI BR-EVO 50 D	SHAFTS BR-EVO 50 D	2	PCS
BRE6D	4440001012	ALBERI BR-EVO 90 D	SHAFTS BR-EVO 90/D	2	PCS
BREV6D	4440001013	ALBERI BR-EVO 170 D	SHAFTS BR-EVO 170/D	2	PCS
BREVO6D	4440001014	ALBERI BR-EVO 260 D	SHAFTS BR-EVO 260/D	2	PCS
BR6PH	4440001176	ALBERO CONDUTTORE BR-EVO 50 P/H	DRIVING SHAFT BR-EVO 50 /P /H	1	PCS
BRE6PH	4440001015	ALBERO CONDUTTORE BR-EVO 90 P/H	DRIVING SHAFT BR-EVO 90 /P /H	1	PCS
BREV6PH	4440001016	ALBERO CONDUTTORE BR-EVO 170 P/H	DRIVING SHAFT BR-EVO 170/P /H	1	PCS
BREVO6PH	4440001017	ALBERO CONDUTTORE BR-EVO 260 P/H	DRIVING SHAFT BR-EVO 260/P /H	1	PCS
BR7PH	4440001177	ALBERO CONDOTTO BR-EVO 50 P/H	DRIVEN SHAFT BR-EVO 50 /P /H	1	PCS
BRE7PH	4440001018	ALBERO CONDOTTO BR-EVO 90 P/H	DRIVEN SHAFT BR-EVO 90/P /H	1	PCS
BREV7PH	4440001019	ALBERO CONDOTTO BR-EVO 170 P/H	DRIVEN SHAFT BR-EVO 170/P /H	1	PCS
BREVO7PH	4440001020	ALBERO CONDOTTO BR-EVO 260 P/H	DRIVEN SHAFT BR-EVO 260/P /H	1	PCS
BRE8	4440001022	TAPPO SFIATO CON VALVOLA 3/4" GAS	VALVE BREATH PLUG 3/4" GAS	1	PCS
BR9	4440001187	GOLFARE FEMMINA M16 UNI 2948	FEMALE EYEBOLT M16 UNI 2948	4	PCS
BRE9	4440001023	GOLFARE FEMMINA M18 UNI 2948	FEMALE EYEBOLT M18 UNI 2948	4	PCS
BR10	4440001171	GOLFARE MASCHIO M10 UNI 2947	MALE EYEBOLT M10 UNI 2947	1	PCS
BRE10	4440001024	GOLFARE MASCHIO M12 UNI 2947	MALE EYEBOLT M12 UNI 2947	1	PCS



## BR EVO

<i>Articolo</i> (Article)	<i>Codice</i> (Code)	<i>Descrizione</i>	<i>(Description)</i>	<i>Q.ty</i>	<i>Um</i>
BR11	4440001168	TIRANTE LUNGO BR-EVO 50	LONG TIE ROD BR-EVO 50	4	PCS
BRE11	4440001025	TIRANTE LUNGO BR-EVO 90-170	LONG TIE ROD BR-EVO 90-170	4	PCS
BREVO11	4440001026	TIRANTE LUNGO BR-EVO 260	LONG TIE ROD BR-EVO 260	4	PCS
BR12	4440001169	TIRANTE CORTO BR-EVO 50	SHORT TIE ROD BR-EVO 50	4	PCS
BRE12	4440001027	TIRANTE CORTO BR-EVO 90-260	SHORT TIE ROD BR-EVO 90-260	4	PCS
BR13	4440001167	CORPO SUPP TENUTE CAM.SEP. BR-EVO 50	BODY HOLDER SEALS BR-EVO 50	1	PCS
BRE13	4440001028	CORPO SUPP TENUTE CAM.SEP. BR-EVO 90-170	BODY HOLDER SEALS SEP.BOX BR-EVO 90-170	1	PCS
BREVO13	4440001029	CORPO SUPP TENUTE CAM.SEP. BR-EVO 260	BODY HOLDER SEALS SEP.BOX BR-EVO 260	1	PCS
BR14	4440001172	SPINA ZIGRINATA D12X45 BR-EVO 50	KNURLED TAP D12X50 BR-EVO 50	8	PCS
BRE14	4440001030	SPINA ZIGRINATA D14X50 BR-EVO 90-170	KNURLED TAP D14X50 BR-EVO 90-170	8	PCS
BREVO14	4440001031	SPINA ZIGRINATA D14X60 BR-EVO 260	KNURLED TAP D14X60 BR-EVO 260	8	PCS
BR15	5051107011	SPINA CILINDRICA D 10X32	CYLINDRICAL PIN - D 10X32	4	PCS
BR16	4440001170	RONDELLA 17X35X6 BR-EVO 50	WASHER 17X35X6 BR-EVO 50	8	PCS
BRE16	4440001032	RONDELLA 19X45X6 BR-EVO 90-260	WASHER 19X45X6 BR-EVO 90-260	8	PCS
BR17	4440001007	DADO AUTOBLOCCANTE M16 BR-EVO 50	SELF LOCKING NUT M16 BR-EVO 50	4	PCS
BRE17	4440001033	DADO AUTOBLOCCANTE M18 BR-EVO 90-260	SELF LOCKING NUT M18 BR-EVO 90-260	4	PCS
BR18	4440001217	BOCCOLA TENUTA MECC BR-EVO 50	MECHANICAL SEAL BUSH BR-EVO 50	2	PCS





## BR EVO

<i>Articolo</i> (Article)	<i>Codice</i> (Code)	<i>Descrizione</i>	<i>(Description)</i>	<i>Q.ty</i>	<i>Um</i>
BRE18	4440001244	BOCCOLA TENUTA MECC BR-EVO 90	MECHANICAL SEAL BUSH BR-EVO 90	2	PCS
BREV18	4440001034	BOCCOLA TENUTA MECC BR-EVO 170	MECHANICAL SEAL BUSH BR-EVO 170	2	PCS
BREVO18	4440001035	BOCCOLA TENUTA MECC BR-EVO 260	MECHANICAL SEAL BUSH BR-EVO 260	2	PCS
BR19	4440001186	CUSC.RULLI CONICISKF 32009 BR-EVO 50	TAPERED ROLLED BEAR. SKF 32009 BR-EVO 50	2	PCS
BRE19	4440001036	CUSC.RULLI CONICISKF 32011 BR-EVO 90-170	TAPERED ROLLED BEAR.SKF32011 BR-EV90-170	2	PCS
BREVO19	4440001037	CUSC.RULLI CONICI SKF 32013 BR-EVO 260	TAPERED ROLLED BEAR.SKF 32013 BR-EVO 260	2	PCS
BR20	4440001173	PIASTRA ANTIUSURA PER CORPO BR-EVO 50	WEAR PLATE FOR BODY BR-EVO 50	2	PCS
BRE20	4440001038	PIASTRA ANTIUSURA PER CORPO BR-EVO90-170	WEAR PLATE FOR BODY BR-EVO 90-170	2	PCS
BREVO20	4440001039	PIASTRA ANTIUSURA PER CORPO BR-EVO 260	WEAR PLATE FOR BODY BR-EVO 260	2	PCS
BR21	4440001216	FLANGIA ALLOGGIAM.TEN. MECC BR-EVO 50	SEAT FLANGE FOR MECH.SEAL BR-EVO 50	2	PCS
BRE21	4440001040	FLANGIA ALLOGGIAM.TEN. MECC BR-EVO90-170	SEAT FLANGE FOR MECH.SEAL BR-EVO 90-170	2	PCS
BREVO21	4440001041	FLANGIA ALLOGGIAM.TENUTA MECC BR-EVO 260	SEAT FLANGE FOR MECH.SEAL BR-EVO 260	2	PCS
BREV22	4440001042	CUSCINETTO RULLINI SKF NKS 30 BR-EVO 170	NEEDLE ROLLER BEAR.SKF NKS 30 BR-EVO 170	2	PCS
BREVO22	4440001043	CUSCINETTO RULLINI SKF NKS 45 BR-EVO 260	NEEDLE ROLLER BEAR.SKF NKS 45 BR-EVO 260	2	PCS
BR23N	4440001231	ROTORE - NBR - BR-EVO 50	ROTOR - NBR - BR-EVO 50	2	PCS
BR23E	4440001232	ROTORE - EPDM - BR-EVO 50	ROTOR - EPDM - BR-EVO 50	2	PCS
BR23F	4440001233	ROTORE - FKM - BR-EVO 50	ROTOR - FKM - BR-EVO 50	2	PCS



## BR EVO

<i>Articolo</i> (Article)	<i>Codice</i> (Code)	<i>Descrizione</i>	<i>(Description)</i>	<i>Q.ty</i>	<i>Um</i>
BRE23N	4440001044	ROTORE - NBR - BR-EVO 90	ROTOR - NBR - BR-EVO 90	2	PCS
BRE23E	4440001045	ROTORE - EPDM - BR-EVO 90	ROTOR - EPDM - BR-EVO 90	2	PCS
BRE23F	4440001046	ROTORE - FKM - BR-EVO 90	ROTOR - FKM - BR-EVO 90	2	PCS
BREV23N	4440001047	ROTORE - NBR - BR-EVO 170	ROTOR - NBR - BR-EVO 170	2	PCS
BREV23E	4440001048	ROTORE - EPDM - BR-EVO 170	ROTOR - EPDM - BR-EVO 170	2	PCS
BREV23F	4440001049	ROTORE - FKM - BR-EVO 170	ROTOR - FKM - BR-EVO 170	2	PCS
BREVO23N	4440001050	ROTORE - NBR - BR-EVO 260	ROTOR - NBR - BR-EVO 260	2	PCS
BREVO23E	4440001051	ROTORE - EPDM - BR-EVO 260	ROTOR - EPDM - BR-EVO 260	2	PCS
BREVO23F	4440001052	ROTORE - FKM - BR-EVO 260	ROTOR - FKM - BR-EVO 260	2	PCS
BR24	4440001234	GRANO ESTREMITA PIANA M10 BR-EVO 50	FLAT END PLUG M10 BR-EVO 50	6	PCS
BRE24	4440001053	GRANO ESTREMITA PIANA M12 BR-EVO 90-260	FLAT END PLUG M12 BR-EVO 90-260	6	PCS
BR25	4440001227	CALETTATORE 44X20 BR-EVO 50	CLAMPING 44X20 BR-EVO 50	2	PCS
BRE25	4440001055	CALETTATORE 30X55 10 VITI BR-EVO 90-170	CLAMPING 30X55 10 BOLTS BR-90-170	2	PCS
BREVO25	4440001056	CALETTATORE 50X80 12VITI M8 BR-EVO 260	CLAMPING 50X80 12 BOLTS M8 BR-EVO 260	2	PCS
BR26N	4440001228	CAPPELLOTTO CHIUSURA BR-EVO 50 NBR	CLOSING TAP BR-EVO 50 NBR	2	PCS
BR26F	4440001229	CAPPELLOTTO CHIUSURA BR-EVO 50 FKM	CLOSING TAP BR-EVO 50 FKM	2	PCS
BRE26N	4440001057	CAPPELLOTTO CHIUSURA BR-EVO 90 NBR	CLOSING TAP BR-EVO 90 NBR	2	PCS



**BR EVO**

<i>Articolo</i> (Article)	<i>Codice</i> (Code)	<i>Descrizione</i>	<i>(Description)</i>	<i>Q.ty</i>	<i>Um</i>
BRE26F	4440001058	CAPPELOTTO CHIUSURA BR-EVO 90 FKM	CLOSING TAP BR-EVO 90 FKM	2	PCS
BREV26	4440001059	TAPPO 30X60X8,5 BR-EVO 170	PLUG 30X60X8,5 BR-EVO 170	2	PCS
BREVO26	4440001060	TAPPO 45X80X8 BR-EVO 260	PLUG 45X80X8 BR-EVO 260	2	PCS
BREV27	4440001061	GRANO ESTREMITÀ PIANA M6X8 BR-EVO170-260	FLAT END PLUG M6X8 BR-EVO170-260	4	PCS
BR28	4440001062	GRANO ESTREMITA PIANA M6X6 BR-EVO	FLAT END PLUG M6X6 BR-EVO 90-260	8	PCS
BR29	4440001063	VITE M6 X 10 TSPEI DIN 7991 BR-EVO50-260	SCREW M6 X 10 TSPEI DIN7991 BR-EVO50-260	14	PCS
BREV30N	4440001064	OR 4118 TAPPO BR-EVO 170 NBR	OR 4118 PLUG BR-EVO 170 NBR	2	PCS
BREV30F	4440001065	OR 4118 TAPPO BR-EVO 170 FKM	OR 4118 PLUG BR-EVO 170 FKM	2	PCS
BREVO30N	4440001066	OR 149 TAPPO BR-EVO 260 NBR	OR 149 PLUG BR-EVO 260 NBR	2	PCS
BREVO30F	4440001067	OR 149 TAPPO BR-EVO 260 FKM	OR 149 PLUG BR-EVO 260 FKM	2	PCS
BREV31N	4440001068	OR 156 TAPPO BR-EVO 170 NBR	OR 156 PLUG BR-EVO 170 NBR	2	PCS
BREV31F	4440001069	OR 156 TAPPO BR-EVO 170 FKM	OR 156 PLUG BR-EVO 170 FKM	2	PCS
BREVO31N	4440001070	OR 176 TAPPO BR-EVO 260 NBR	OR 176 PLUG BR-EVO 260 NBR	2	PCS
BREVO31F	4440001071	OR 176 TAPPO BR-EVO 260 FKM	OR 176 PLUG BR-EVO 260 FKM	2	PCS
BRE32N	4440001072	OR 2237 BOCCOLA EST. BR-EVO 90 NBR	OR 2237 EXTERNAL BUSH BR-EVO 90 NBR	2	PCS
BRE32F	4440001073	OR 2237 BOCCOLA EST. BR-EVO 90 FKM	OR 2237 EXTERNAL BUSH BR-EVO 90 FKM	2	PCS
BREV32N	4440001074	OR 162 BOCCOLA EST. BR-EVO 170 NBR	OR 162 EXTERNAL BUSH BR-EVO 170 NBR	2	PCS



## BR EVO

Articolo (Article)	Codice (Code)	Descrizione	(Description)	Q.ty	Um
BREV32F	4440001075	OR 162 BOCCOLA EST. BR-EVO 170 FKM	OR 162 EXTERNAL BUSH BR-EVO 170 FKM	2	PCS
BREVO32N	4440001076	OR 174 BOCCOLA EST. BR-EVO 260 NBR	OR 174 EXTERNAL BUSH BR-EVO 260 NBR	2	PCS
BREVO32F	4440001077	OR 174 BOCCOLA EST. BR-EVO 260 FKM	OR 174 EXTERNAL BUSH BR-EVO 260 FKM	2	PCS
BR33	4440001190	OR 4131 ALB.CONDOTTO-CONDUTT BR-EVO 50	OR 4131 DRIVING-DRIVEN SHAFT BR-EVO 50	2	PCS
BRE33	4440001078	OR 147 ALB.CONDOTTO-CONDUTT BR-EVO90-260	OR 147 DRIVING-DRIVEN SHAFT BR-EVO90-260	2	PCS
BR34	4440001008	LINGUETTA 12X8X40 UNI 6604 BR-EVO 50	KEY 12X8X40 UNI 6604 BR-EVO 50	2	PCS
BRE34	4440001079	LINGUETTA 14X9X45 UNI 6604 BR-EVO 90	KEY 14X9X45 UNI 6604 BR-EVO 90	2	PCS
BREV34	4440001080	LINGUETTA 14X9X70 UNI 6604 BR-EVO 170	KEY 14X9X70 UNI 6604 BR-EVO 170	2	PCS
BREVO34	4440001081	LINGUETTA 18X11X100UNI6605(M6)BR-EVO 260	KEY 18X11X100 UNI6605 (M6) BR-EVO 260	2	PCS
BREVO35	4440001082	VITE M6X12TCEI ZINCATA UNI5931 BR-EVO260	SCREW M6X12TCEI GALV. UNI5931 BR-EVO 260	2	PCS
BR36N	4440001191	OR 4150 BOCCOLA INT. BR-EVO 50 NBR	OR 4150 INTERNAL BUSH BR-EVO 50 NBR	2	PCS
BR36F	4440001192	OR 4150 BOCCOLA INT. BR-EVO 50 FKM	OR 4150 INTERNAL BUSH BR-EVO 50 FKM	2	PCS
BRE36N	4440001085	OR 3206 BOCCOLA INT. BR-EVO 90-170 NBR	OR 3206 INTERNAL BUSH BR-EVO 90-170 NBR	2	PCS
BRE36F	4440001086	OR 3206 BOCCOLA INT. BR-EVO 90-170 FKM	OR 3206 INTERNAL BUSH BR-EVO 90-170 FKM	2	PCS
BREVO36N	4440001087	OR 3237 BOCCOLA INT. BR-EVO 260 NBR	OR 3237 INTERNAL BUSH BR-EVO 260 NBR	2	PCS
BREVO36F	4440001088	OR 3237 BOCCOLA INT. BR-EVO 260 FKM	OR 3237 INTERNAL BUSH BR-EVO 260 FKM	2	PCS
BR37N	4440001193	OR 4300 FLANGIA EST. BR-EVO 50 NBR	OR 4300 EXTERNAL FLANGE BR-EVO 50 NBR	2	PCS



**BR EVO**

<i>Articolo</i> <i>(Article)</i>	<i>Codice</i> <i>(Code)</i>	<i>Descrizione</i>	<i>(Description)</i>	<i>Q.ty</i>	<i>Um</i>
BR37F	4440001194	OR 4300 FLANGIA EST. BR-EVO 50 FKM	OR 4300 EXTERNAL FLANGE BR-EVO 50 FKM	2	PCS
BRE37N	4440001089	OR 3375 FLANGIA EST. BR-EVO 90-170 NBR	OR 3375 EXTERNAL FLANGE BR-EVO90-170 NBR	2	PCS
BRE37F	4440001090	OR 3375 FLANGIA EST. BR-EVO 90-170 FKM	OR 3375 EXTERNAL FLANGE BR-EVO90-170 FKM	2	PCS
BREVO37N	4440001091	OR 3425 FLANGIA EST. BR-EVO 260 NBR	OR 3425 EXTERNAL FLANGE BR-EVO 260 NBR	2	PCS
BREVO37F	4440001092	OR 3425 FLANGIA EST. BR-EVO 260 FKM	OR 3425 EXTERNAL FLANGE BR-EVO 260 FKM	2	PCS
BR38W	4440001223	ANELLO TENUTA MECC. WIDIA BR-EVO 50	MECHANICAL SEAL WIDIA RING BR-EVO 50	4	PCS
BRE38W	4440001093	ANELLO TENUTA MECC. WIDIA BR-EVO 90-170	MECHANICAL SEAL WIDIA RING BR-EVO 90-170	4	PCS
BREVO38W	4440001095	ANELLO TENUTA MECC. WIDIA BR-EVO 260	MECHANICAL SEAL WIDIA RING BR-EVO 260	4	PCS
BRE39N	4440001097	OR D58X7 TENUTA MECC. BR-EVO 90-170 NBR	OR D58X7 MECH.SEAL BR-EVO 90-170 NBR	4	PCS
BRE39F	4440001098	OR D58X7 TENUTA MECC. BR-EVO 90-170 FKM	OR D58X7 MECH.SEAL BR-EVO 90-170 FKM	4	PCS
BREVO39N	4440001099	OR D75X8 TENUTA MECC. BR-EVO260 NBR	OR D75X8 MECH.SEAL BR-EVO 260 NBR	4	PCS
BREVO39F	4440001100	OR D75X8 TENUTA MECC. BR-EVO260 FKM	OR D75X8 MECH.SEAL BR-EVO 260 FKM	4	PCS
BR40N	5030210059	ANELLO TENUTA OR 8825 Ø208.9X6.99 NBR	SEAL RING - OR 8825 Ø208.9X6.99 NBR	1	PCS
BR40F	4440001230	ANELLO TENUTA OR 8825 Ø208.9X6.99 FKM	OR 8825 Ø208.9X6.99 FKM	1	PCS
BRE40N	4440001101	OR 61200 COP. POST. BR-EVO 90-170 NBR	OR 61200 BACK COVER BR-EVO 90-170 NBR	1	PCS
BRE40F	4440001102	OR 61200 COP. POST. BR-EVO 90-170 FKM	OR 61200 BACK COVER BR-EVO 90-170 FKM	1	PCS
BREVO40N	4440001103	OR 61500 COP. POST. BR-EVO 260 NBR	OR 61500 BACK COVER BR-EVO 260 NBR	1	PCS





## BR EVO

<i>Articolo</i> (Article)	<i>Codice</i> (Code)	<i>Descrizione</i>	<i>(Description)</i>	<i>Q.ty</i>	<i>Um</i>
BREVO40F	4440001104	OR 61500 COP. POST. BR-EVO 260 FKM	OR 61500 BACK COVER BR-EVO 260 FKM	1	PCS
BR41	4440001195	RUOTA DENTATA DP.99 BR-EVO 50	GEAR WHEEL DP.99 BR-EVO 50	2	PCS
BRE41	4440001105	RUOTA DENTATA DP.144 BR-EVO 90-170	GEAR WHEEL DP.144 BR-EVO 90-170	2	PCS
BREVO41	4440001106	RUOTA DENTATA DP.176 BR-EVO 260	GEAR WHEEL DP.176 BR-EVO 260	2	PCS
BR42	4440001196	CALETTATORE 42X75 BR-EVO 50	CLAMPING 42X75 BR-EVO 50	2	PCS
BRE42	4440001107	CALETTATORE RCK 70 52X85 BR-EVO 90-170	CLAMPING RCK 70 52X85 BR-EVO 90-170	2	PCS
BREVO42	4440001108	CALETTATORE RCK 70 55X85 BR-EVO 260	CLAMPING RCK 70 55X85 BR-EVO 260	2	PCS
BR43PH	4440001178	GHIERA DI BLOCCAGGIO KM 7 BR-EVO 50 P H	LOCKING RING NUT KM 7 BR-EVO 50 /P /H	4	PCS
BR43D	4440001179	GHIERA DI BLOCCAGGIO KM 8 BR-EVO 50 D	LOCKING RING NUT KM 8 BR-EVO 50 /D	4	PCS
BRE43	4440001109	GHIERA DI BLOCCAGGIO KM 9 BR-EVO 90-260	LOCKING RING NUT KM 9 BR-EVO 90-260	4	PCS
BREVO43D	4440001110	GHIERA DI BLOCCAGGIO KM 10 BR-EVO260/D	LOCKING RING NUT KM 10 BR-EVO260/D	4	PCS
BR44PH	4440001180	ROSETTA PER GHIERA KM 7 BR-EVO 50 P H	WASHER FOR RING NUT KM 7 BR-EVO 50 /P /H	2	PCS
BR44D	4440001181	ROSETTA PER GHIERA KM 8 BR-EVO 50 D	WASHER FOR RING NUT KM 8 BR-EVO 50 /D	2	PCS
BRE44	4440001111	ROSETTA PER GHIERA KM 9 BR-EVO 90-260	WASHER FOR RING NUT KM 9 BR-EVO 90-260	2	PCS
BREVO44D	4440001112	ROSETTA PER GHIERA KM 10 BR-EVO 260/D	WASHER FOR RING NUT KM 10 BR-EVO 260/D	2	PCS
BR45	4440001189	ANELLO INT. SKF IR 40X50X20 BR-EVO 50	INT. RING SKF IR 40X50X20 BR-EVO 50	2	PCS
BRE45	4440001113	ANELLO INT. SKF IR 50X60X25 BR-EVO90-260	INT. RING SKF IR SERIE 50X60X25 BR-EVO	2	PCS



**BR EVO**

<i>Articolo</i> (Article)	<i>Codice</i> (Code)	<i>Descrizione</i>	<i>(Description)</i>	<i>Q.ty</i>	<i>Um</i>
BR46	4440001197	ANELLO TENUTA 50X68X10 BR-EVO 50	SEAL RING 50X68X10 BR-EVO 50	2	PCS
BRE46	4440001114	ANELLO TENUTA 60X80X10 BR-EVO 90-260	SEAL RING 60X80X10 BR-EVO 90-260	2	PCS
BRE47	4440001115	ANELLO TENUTA COP. LOBI 42X55X8 BR-EVO	SEAL RING LOBE COVER 40X55X8 BR-EVO	2	PCS
BREVO47	4440001116	ANELLO TEN. COP.LOBI45X55X7 BR-EVO 260/D	SEAL RING LOBE COVER 45X55X7 BR-EVO260/D	2	PCS
BREV48	5050812001	INGRASSATORE M 10X1	LUBRICATOR - M 10X1	2	PCS
BR49	4440001212	VITE M 6X45 TCEI ZINC. UNI5931 BR-EVO 50	SCREW M 6X45 TCEI GALV.UNI 5931 BR-EVO50	4	PCS
BRE49	4440001118	VITE M 6X50 TCEI ZINC.U5931 BR-EVO90-260	SCREW M 6X50TCEI GALV.U5931 BR-EVO90-260	6	PCS
BRE50	4440001119	TAPPO MAGNETICO SCARICO OLIO 3/4" BR-EVO	MAGNETIC DISCHARGE OIL PLUG 3/4" BR-EVO	1	PCS
BRE51	4440001120	RONDELLA 3/4" 26.3X33.3X1.6 BR-EVO	WASHER 3/4" 26.3X33.3X1.6 BR-EVO	2	PCS
BR52	4440001121	RONDELLA 1/2" 22X25.8X1.5 BR-EVO	WASHER 1/2" 22X25.8X1.5 BR-EVO	2	PCS
BR53	4440001214	VITE M8X30 TCEI ZINCATA BR-EVO 50	SCREW M8X30 TCEI GALV. BR-EVO 50	6	PCS
BRE53	4440001122	VITE M10X35 TCEI ZINCATA BR-EVO 90-170	SCREW M10X35 TCEI GALV. BR-EVO 90-170	6	PCS
BREVO54	4440001124	VITE M12X55 TETF ZINC.UNI5739 BR-EVO 260	SCREW M12X55 TETF ZINC.UNI5739 BR-EVO260	6	PCS
BRE55	4440001127	SPINA CILINDR.D6X36 DIN6325 BR-EVO90-170	CILYNDER PIN D6X36 DIN6325 BR-EVO90-170	2	PCS
BR56	4440001128	TAPPO SFIATO CON VALVOLA 1/2"GAS BR-EVO	BREATH PLUG WITH VALVE 1/2"GAS BR-EVO	1	PCS
BRE57	4440001129	TAPPO LIV.OLIO 1/4"GAS BR-EVO	OIL LEVEL PLUG 1/4"GAS BR-EVO	1	PCS
BR58	4440001188	TAPPO MAGN.SCAR. OLIO 1/2"GAS BR-EVO 50	MAGNET.OIL DISCH.PLUG1/2"G BR-EVO 50	1	PCS



## BR EVO

<i>Articolo</i> (Article)	<i>Codice</i> (Code)	<i>Descrizione</i>	<i>(Description)</i>	<i>Q.ty</i>	<i>Um</i>
BRE58	4440001130	TAPPO MAGN.SCARICO OLIO 1/4" GAS BR-EVO	MAGNET.OIL DISCH.PLUG1/4"G BR-EVO 90-260	1	PCS
BRE59	4440001131	ANELLO ANTIUSURA 70X55X12 BR-EVO90-170	WEAR RING 70X55X12 BR-EVO90-170	2	PCS
BREVO59	4440001132	ANELLO ANTIUSURA 80X65X14 BR-EVO 260	WEAR RING 80X65X14 BR-EVO 260	2	PCS
BRE61	4440001133	ANELLO TEN.DOPPIO 70X100X10 BR-EVO90-170	DOUBLE SEAL RING 70X100X10 BR-EVO90-170	2	PCS
BREVO61	4440001134	ANELLO TEN.DOPPIO 80X110X10 BR-EVO 260	DOUBLE SEAL RING 80X110X10 BR-EVO 260	2	PCS
BRE62	4440001135	GUARN. PIASTRA COP.POST. BR-EVO 90-170	GASKET BACK COVER PLATE BR-EVO 90-170	1	PCS
BREVO62	4440001136	GUARN. PIASTRA COP.POST. BR-EVO 260	GASKET BACK COVER PLATE BR-EVO 260	1	PCS
BRE63	4440001137	GUARN. PIASTRA CORPO POMPA BR-EVO 90-170	GASKET HOUSING PLATE BR-EVO 90-170	1	PCS
BREVO63	4440001138	GUARN. PIASTRA CORPO POMPA BR-EVO 260	GASKET HOUSING PLATE BR-EVO 260	1	PCS
BRE64	4440001139	GUARN. CORPO-SUPP.TENUTE BR-EVO 90-170	GASKET BODY-SEAL HOLDER BR-EVO 90-170	1	PCS
BREVO64	4440001140	GUARN. CORPO-SUPP.TENUTE BR-EVO 260	GASKET BODY-SEAL HOLDER BR-EVO 260	1	PCS
BRE65	4440001141	GUARN. SUPP.TENUTE-SUPP.ALB BR-EVO90-170	GASKET SEAL HOLD-SHAFT HOLD BR-EVO90-170	1	PCS
BREVO65	4440001142	GUARN. SUPP.TENUTE-SUPP.ALB. BR-EVO 260	GASKET SEAL HOLD-SHAFT HOLD BR-EVO 260	1	PCS
BREV66	4440001143	NIPPLO M16-M10 CH. 17 BR-EVO 170-260	NIPPLE M16-M10 CH. 17 BR-EVO 170-260	2	PCS
BREV67	4440001144	RONDELLA 3X40X5 BR-EVO 170	WASHER 3X40X5 BR-EVO 170	2	PCS
BREVO67	4440001145	RONDELLA 3X60X10 BR-EVO 260	WASHER 3X60X10 BR-EVO 260	2	PCS
BREV68N	4440001146	ANELLO TENUTA 10BAR 30X47X7 BREVO170 NBR	SEAL RING 10 BAR 30X47X7 BR-EVO 170	2	PCS



**BR EVO**

<i>Articolo</i> (Article)	<i>Codice</i> (Code)	<i>Descrizione</i>	<i>(Description)</i>	<i>Q.ty</i>	<i>Um</i>
BREV68F	4440001242	ANELLO TENUTA 10BAR 30X47X7 BREVO170 FKM	SEAL RING 10BAR 30X47X7 BR-EVO 170 FKM	2	PCS
BREVO68N	4440001147	ANELLO TENUTA 10BAR 45X62X7 BREVO260 NBR	SEAL RING 10 BAR 45X62X7 BR-EVO 260 NBR	2	PCS
BREVO68F	4440001243	ANELLO TENUTA 10BAR 45X62X7 BREVO260 FKM	SEAL RING 10 BAR 45X62X7 BR-EVO 260 FKM	2	PCS
BR69	4060505009	CONTROCUFFIA PROTEZ. ABS BR-EVO 50-170/D	ABS SHIELD HOUSING BR-EVO 90-170/D	1	PCS
BREVO69	4440001149	CONTROCUFFIA PROTEZIONE FE BR-EVO 260/D	IRON SHIELD HOUSING BR-EVO 260/D	1	PCS
BR70	4440001150	RONDELLA M6 ZINCATA BR-EVO 50-170/D	WASHER M6 GALV. BR-EVO 50-170/D	4	PCS
BREVO70	5050207024	RONDELLA D 10 ZINCATA	GALVANIZED FLAT WASHER - D 10	4	PCS
BR71	4440001237	VITE M6X16 TETF ZINCATA BR-EVO 50/D	SCREW M6X16 TETF GALV. BR-EVO 50/D	4	PCS
BRE71	4440001151	VITE M6X12 TETF ZINCATA BR-EVO 90-170/D	SCREW M6X12 TETF GALV. BR-EVO 90-170/D	4	PCS
BREVO71	4440001152	VITE M10X20 TETF ZINCATA BR-EVO 260/D	SCREW M10X20 TETF GALV. BR-EVO 260/D	4	PCS
BR72	4440001235	KIT ESTRATTORE LOBI CON VITI BR-EVO 50	LOBES EXTR. KIT W/ SCREW BR-EVO 50	1	PCS
BRE72	4440001153	KIT ESTRATTORE LOBI CON VITI BREVO90-260	LOBES EXTR. KIT W/ SCREW BR-EVO 90-260	1	PCS
BR73	4440001236	KIT SPINGI BOCCOLA TM BR-EVO 50	MECC.SEAL BUSH ASSEMBLY KIT BR-EVO 50	1	PCS
BRE73	4440001154	KIT SPINGI BOCCOLA TM BR-EVO 90-170	MECC.SEAL BUSH ASSEMBLY KIT BR-EVO90-170	1	PCS
BREVO73	4440001155	KIT SPINGI BOCCOLA TM BR-EVO 260	MECC.SEAL BUSH ASSEMBLY KIT BR-EVO 260	1	PCS
BR75	4440001240	COPERCHIO ALBERO BR-EVO 50/H	SHAFT COVER BR-EVO 50/H	1	PCS
BRE75	4440001159	COPERCHIO ALBERO BR-EVO 90-260/P /H	SHAFT COVER BR-EVO 90-260/P /H	1	PCS



## BR EVO

<i>Articolo</i> (Article)	<i>Codice</i> (Code)	<i>Descrizione</i>	<i>(Description)</i>	<i>Q.ty</i>	<i>Um</i>
BR76	4440001182	LINGUETTA 8X7X50 BR-EVO 50 /P /H	KEY 8X7X50 BR-EVO 50 /P /H	1	PCS
BRE76	4440001160	LINGUETTA 8X10X70 BR-EVO 90-260/P /H	KEY 8X10X70 BR-EVO 90-260/P /H	1	PCS
BREV77	4440001161	SEEGER I 47 UNI 7437 DIN 472 BR-EVO 170	CLIP RING I 47 UNI7437 DIN472 BR-EVO 170	4	PCS
BREVO77	4440001198	SEEGER I 62 UNI 7437 DIN 472 BR-EVO 260	CLIP RING I 47 UNI7437 DIN472 BR-EVO 260	4	PCS
BR78	4440001238	CAMPANA MOTORE H BR-EVO 50/H	HYDRAULIC MOTOR SUPPORT BR-EVO 50/H	1	PCS
BRE78	4440001162	CAMPANA MOTORE H BR-EVO 90-260/H	HYDRAULIC MOTOR SUPPORT BR-EVO 90-260/H	1	PCS
BR79	4440001241	GIUNTO RIGIDO PER BR-EVO 50/H	RIGID COUPLING FOR BR-EVO 50/H	1	PCS
BRE79	4440001163	GIUNTO RIGIDO PER BR-EVO 90-260/H	RIGID COUPLING FOR BR-EVO 90-260/H	1	PCS
BR80	4440001164	GRANO M8X16 ISO 4027 BR-EVO 50-260/H	THREADED DOWEL M8X16 ISO 4027 BR-EVO/H	1	PCS
BR81	4440001239	VITE M8X20 TCEI ZINCATA BR-EVO 50/H	SCREW M8X20 TCEI GALV. BR-EVO 50/H	6	PCS
BRE81	4440001165	VITE M8X25 TCEI ZINCATA BR-EVO 90-260/H	SCREW M8X25 TCEI GALV. BR-EVO 90-260/H	6	PCS
BR82	4440001021	TAPPO LIVELLO OLIO 1/2" GAS MOD 38 A	OIL LEVEL PLUG 1/2"GAS MOD 38 A	1	PCS
BR83	5012107037	CUSCINETTO A RULLI CONICI 32008 XA	TAPERED ROLLER BEARING - 32008 XA	2	PCS
BRE83	4440001054	CUSC.RULLI CONICI SKF32010 BR-EVO 90-260	ROLLER BEARING SKF 32010 BR-EVO 90-260	2	PCS
BRE84	4440001083	GRANO ESTR.CONV. M8X12 ISO4027 BR-EVO 90	ROUND END PLUG M8X12 ISO 4027 BR-EVO 90	6	PCS
BREV84	4440001084	GRANO ESTR.CONV. M10X12 I4027 BR-E17-260	ROUND END PLUG M10X12ISO4027 BR-EVO 17-260	6	PCS
BR85	4440001215	RONDELLA DENTELLATA X M8 BR-EVO 50	TOOTHED WASHER X M8 BR-EVO 50	6	PCS





BR85	4440001125	RONDELLA DENTELLATA X M10 BR-EVO 90-170	TOOTHED WASHER X M10 BR-EVO 90-170	6	PCS
BREVO85	4440001126	RONDELLA ELAST. AD "A" D12,2 BR-EVO 260	ELASTIC WASHER "A"SHAPE D12,2 BR-EVO260	10	PCS
BREV88	4440001199	ANELLO INT. SKF IR 25X30X32 BR-EVO 170	INTERNAL RING SKF IR 25X30X32 BR-EVO 170	2	PCS
BREVO88	4440001211	ANELLO INT. SKF IR 40X45X40 BR-EVO 260	INTERNAL RING SKF IR 40X45X40 BR-EVO 260	2	PCS
BR89	4440001213	VITE M 6X35 TCEI ZINC. UNI5931 BR-EVO 50	SCREW M 6X35 TCEI GALV.UNI 5931 BR-EVO50	8	PCS
BR90	4440001218	GRANO M8X10 ISO 4027 BR-EVO 50	THREADED DOWEL M8X10 ISO 4027 BR-EVO 50	4	PCS
BR91N	4440001219	OR M 0410-30 BOCC P.TEN.MEC NBR BR-EVO50	OR M 0410-30 MECH.SEAL BUSH BR-EVO50 NBR	2	PCS
BR91F	4440001220	OR M 0410-30 BOCC P.TEN.MEC FKM BR-EVO50	OR M 0410-30 MECH.SEAL BUSH BR-EVO50 FKM	2	PCS
BR92N	4440001221	OR DI 48 D6 TENUTA MECC. NBR BR-EVO50	OR DI 48 D6 MECH. SEAL NBR BR-EVO50	4	PCS
BR92F	4440001222	OR DI 48 D6 TENUTA MECC. FKM BR-EVO50	OR DI 48 D6 MECH. SEAL FKM BR-EVO50	4	PCS
BR93N	4440001225	OR 3287 EST. FL. PORTATEN. MECC. NBR	OR 3287 EXT. FL. SUPPORT MECH.SEAL NBR	2	PCS
BR93F	4440001226	OR 3287 EST. FL. PORTATEN. MECC. FKM	OR 3287 EXT. FL. SUPPORT MECH.SEAL FKM	2	PCS
BR94	5050906009	TAPPO D 1/2" GAS	PLUG - D 1/2" GAS	2	PCS
BREV97	4440001245	FLANGIA CENTRAGGIO COP. POST. BR-EVO 170	CENTERING FLANGE BACK COVER BR-EVO 170	2	PCS
BREVO97	4440001246	FLANGIA CENTRAGGIO COP. POST. BR-EVO 260	CENTERING FLANGE BACK COVER BR-EVO 260	2	PCS



Battioni®  
Pagani

*Setting the pace since 1953*

0	15.01.2018	1° EMISSIONE	PROG	R DT	AM
REV.	DATA	MOTIVO	PREPARATO	APPROVATO	AUTORIZZATO



**Battioni®**  
**Pagani**

*Setting the pace since 1953*

Via Cav. Enzo Ferrari, 2  
43058 Ramoscello di Sorbolo (PR) - Italy

Ph. +39 0521 663203

Fax +39 0521 663206



[www.bapag.it](http://www.bapag.it)  
[info@bapag.it](mailto:info@bapag.it)